

FEATURES

Standard model

- High-contrast dial face, sealed with O-ring
- Mineral glass viewing panel for best protection:
 - against cracking, scratching or damage caused by hot shavings
 - optimum resistance to solvents
- Matt chrome-plated protective casing with three integrated dovetail guide rails
- Shockproof measuring mechanism
- Anti-magnetic model
- Automatic adjustment to the contacting direction ensuring infallible readings
- Ball bearing mounted double lever
- Friction clutch overload protection
- **Package contains:** case, instruction manual, Spanner for changing the styli, stylus diameter \varnothing 2 mm, mounting shaft 800a8



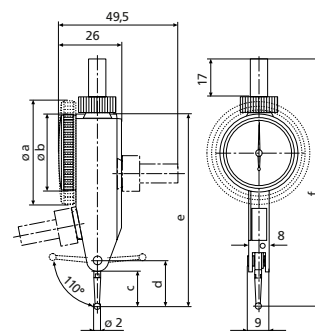
Applications:

- Measurement of concentricity, alignment, parallelism and flatness
- Centering of bores and shafts
- Parallel or perpendicular alignment of workpieces

TECHNICAL DATA

Order no.	4305200	4307200	4307250	4301200	4301250
Standard	DIN 2270		Factory standard		
Type	800 S	800 SG	800 SR	800 SA	800 SGA
Measuring range	mm ± 0.4		± 0.8	± 0.25	
Readings	mm		0.01		
Measuring surface	carbide				
Scale diameter	mm 28	38		28	38
Type of dial face	40–0–40			25–0–25	
Dial color	Yellow				
Measuring force	N	0.15		0.1	
Range per rev.	mm	0.8		0.5	
Deviation range f_e	μm	10		5	
Total deviation range f_{ges}	μm	13	14	8	
Measuring value hysteresis f_u	μm	3	4	3	
Partial measuring span f_t	μm	5			
Repeatability f_w	μm	3			

Order no.	a	b	c	d	e	f	Measuring anvil length
	mm	mm	mm	mm	mm	mm	mm
4305200		30	13.6	17.8	75	99	14.5
4307200	40.5		13.6	17.8	75	99	14.5
4307250	40.5		13.6	17.8	75	99	14.5
4301200		30	13.6	17.8	75	99	14.5
4301250	40.5		13.6	17.8	75	99	14.5



ACCESSORIES

Order no.	Description	Type
4305870	Stylus \varnothing 1.0 mm, carbide, $l = 14.5$ mm	800 ts
4305850	Stylus \varnothing 2.0 mm, carbide, $l = 14.5$ mm	800 ts
4305871	Stylus \varnothing 3.0 mm, carbide, $l = 14.5$ mm	800 ts
4309051	Stylus \varnothing 2.0 mm, ruby, $l = 14.5$ mm	800 tsr
4305868	Spanner	

