

### FEATURES

For high-precision measurements

- High-contrast dial face, sealed with O-ring
- Mineral glass viewing panel for best protection:
  - against cracking, scratching or damage caused by hot shavings
  - optimum resistance to solvents
- Matt chrome-plated protective casing with three integrated dovetail guide rails
- Shockproof measuring mechanism
- Anti-magnetic model
- Automatic adjustment to the contacting direction ensuring infallible readings
- Ball bearing mounted double lever
- Friction clutch overload protection
- **Package contains:** case, instruction manual, Spanner for changing the styli, stylus diameter  $\varnothing$  2 mm, mounting shaft 800a8



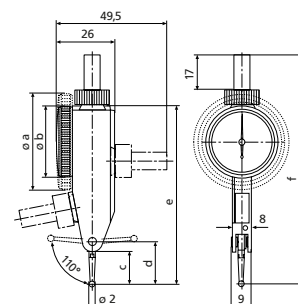
### Applications:

- Measurement of concentricity, alignment, parallelism and flatness
- Centering of bores and shafts
- Parallel or perpendicular alignment of workpieces

### TECHNICAL DATA

Order no.				4308220
Standard				Factory standard
Type				800 SGE
Measuring range	mm			$\pm$ 0.07
Readings	mm			0.001
Measuring surface				carbide
Scale diameter	mm			38
Type of dial face				70–0–70
Dial color				Yellow
Measuring force	N			0.2
Range per rev.	mm			0.14
Deviation range $f_e$	$\mu$ m			3
Total deviation range $f_{ges}$	$\mu$ m			4
Measuring value hysteresis $f_u$	$\mu$ m			2
Partial measuring span $f_t$	$\mu$ m			2
Repeatability $f_w$	$\mu$ m			1.5

Order no.	a	c	d	e	f	Measuring anvil length
	mm	mm	mm	mm	mm	mm
4308220	40.5	8.3	12.5	70	94	9.15



### ACCESSORIES

Order no.	Description	Type
4308851	Stylus $\varnothing$ 1.0 mm, carbide, l = 9.1 mm	800 te
4308850	Stylus $\varnothing$ 2.0 mm, carbide, l = 9.1 mm	800 te
4308852	Stylus $\varnothing$ 3.0 mm, carbide, l = 9.1 mm	800 te
4309050	Stylus $\varnothing$ 2.0 mm, ruby, l = 9.1 mm	800 ter
4305868	Spanner	

