

FEATURES

Vertical model

- High-contrast dial face, sealed with O-ring
- Mineral glass viewing panel for best protection:
 - against cracking, scratching or damage caused by hot shavings
 - optimum resistance to solvents
- Matt chrome-plated protective casing with three integrated dovetail guide rails
- Shockproof measuring mechanism
- Anti-magnetic model
- Automatic adjustment to the contacting direction ensuring infallible readings
- Ball bearing mounted double lever
- Friction clutch overload protection
- **Package contains:** case, instruction manual, Spanner for changing the styli, stylus diameter $\varnothing 2$ mm, mounting shaft 800a8



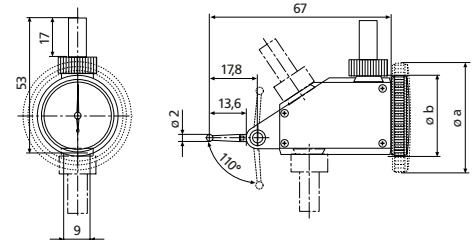
Applications:

- Measurement of concentricity, alignment, parallelism and flatness
- Centering of bores and shafts
- Parallel or perpendicular alignment of workpieces

TECHNICAL DATA

Order no.			4302250
Standard			DIN 2270
Type			800 VGM
Measuring range	mm		± 0.1
Readings	mm		0.002
Measuring surface			carbide
Scale diameter	mm		38
Type of dial face			100-0-100
Dial color			Yellow
Measuring force	N		0.25
Range per rev.	mm		0.2
Deviation range f_e	μm		3
Total deviation range f_{ges}	μm		4
Measuring value hysteresis f_u	μm		2
Partial measuring span f_t	μm		2
Repeatability f_w	μm		1.5

Order no.	a	Measuring anvil length
	mm	mm
4302250	40.5	14.5



ACCESSORIES

Order no.	Description	Type
4305870	Stylus $\varnothing 1.0$ mm, carbide, $l = 14.5$ mm	800 ts
4305850	Stylus $\varnothing 2.0$ mm, carbide, $l = 14.5$ mm	800 ts
4305871	Stylus $\varnothing 3.0$ mm, carbide, $l = 14.5$ mm	800 ts
4309051	Stylus $\varnothing 2.0$ mm, ruby, $l = 14.5$ mm	800 tsr
4305868	Spanner	

