

### FEATURES

#### Horizontal model

- High-contrast dial face, sealed with O-ring
- Mineral glass viewing panel for best protection:
  - against cracking, scratching or damage caused by hot shavings
  - optimum resistance to solvents
- Matt chrome-plated protective casing with three integrated dovetail guide rails
- Shockproof measuring mechanism
- Anti-magnetic model
- Automatic adjustment to the contacting direction ensuring infallible readings
- Ball bearing mounted double lever
- Friction clutch overload protection
- **Package contains:** case, instruction manual, Spanner for changing the styli, stylus diameter  $\varnothing$  2 mm, mounting shaft 800a8



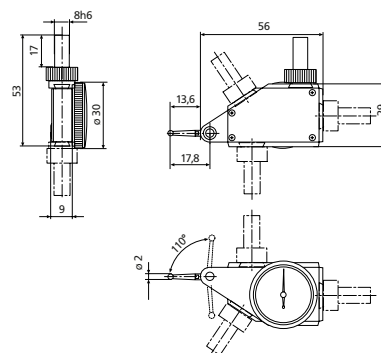
#### Applications:

- Measurement of concentricity, alignment, parallelism and flatness
- Centering of bores and shafts
- Parallel or perpendicular alignment of workpieces

### TECHNICAL DATA

Order no.			4303200
Standard			DIN 2270
Type			800 H
Measuring range	mm		$\pm$ 0.4
Readings	mm		0.01
Measuring surface			carbide
Scale diameter	mm		28
Type of dial face			40–0–40
Dial color			Yellow
Measuring force	N		0.25
Range per rev.	mm		0.8
Deviation range $f_e$	$\mu$ m		10
Total deviation range $f_{ges}$	$\mu$ m		13
Measuring value hysteresis $f_u$	$\mu$ m		3
Partial measuring span $f_t$	$\mu$ m		5
Repeatability $f_w$	$\mu$ m		3

Order no.	Measuring anvil length
	mm
4303200	14.5



### ACCESSORIES

Order no.	Description	Type
4305870	Stylus $\varnothing$ 1.0 mm, carbide, $l$ = 14.5 mm	800 ts
4305850	Stylus $\varnothing$ 2.0 mm, carbide, $l$ = 14.5 mm	800 ts
4305871	Stylus $\varnothing$ 3.0 mm, carbide, $l$ = 14.5 mm	800 ts
4309051	Stylus $\varnothing$ 2.0 mm, ruby, $l$ = 14.5 mm	800 tsr
4305868	Spanner	

