

# MarCator 810 SM / 810 SRM

## Dial indicator

### FEATURES

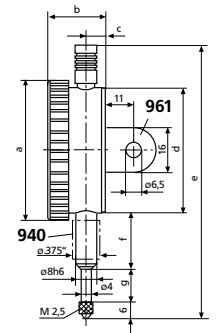
- High contrast dial face
- Adjustable tolerance markers
- Chrome plated housing
- Lifter protection cap on the measuring spindle
- Precise mechanism with a combined gear lever transmission
- High accuracy with a minimum span of error
- **Package contains:** case



### TECHNICAL DATA

Order no.		4311070	4311080
Type		810 SM	810 SRM
Measuring span	mm	1	5
Readings	mm	0.001	
Type of dial face		0–100	0–100–0
Error limit, measuring range	µm	4	10
Error limit, 1 revolution	µm	3	5
Error limit, 1/2 revolution	µm	2	4
Error limit, 1/10 revolution	µm	1	3
Repeatability $f_w$	µm	1.5	3
Measuring value hysteresis $f_u$	µm	1.5	3
Free stroke	mm	4	0.1
Measuring force incoming measuring pin	N	1.3–1.8	1.2–1.7
Standard		Factory standard	
Shockproof movement		•	
Lifting protection cap		•	
Scale diameter	mm	50	
Range per turn	mm	0.1	0.2

Order no.	a	b	c	d	e	f	g	Mounting shaft
	mm	mm	mm	mm	mm	mm	mm	mm
4311070	58	23	8.5	52	111.5	22	15	8
4311080	58	23	7.5	52	111.5	22	15	8



### ACCESSORIES

Order no.	Description	Type
4310103	Adapter bushing (.375" / 8 mm)	940
4373020	Splash proof cap (58 mm)	955
4375010	Lug back, vertical, for 810	961
4375011	Lug back, horizontal, for 810	962