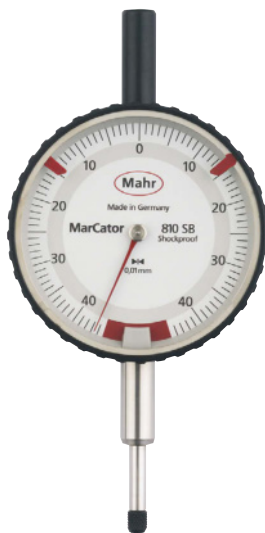


## Safety dial indicator

### FEATURES

- High contrast dial face
- Adjustable tolerance markers
- Chrome plated housing
- Hermetically sealed protective measuring spindle cap
- Limited measuring range for error free readings
- Large overtravel (ca. 9 mm) for easier insertion of test items in measuring devices
- Precision gears and pinions
- Package contains: case



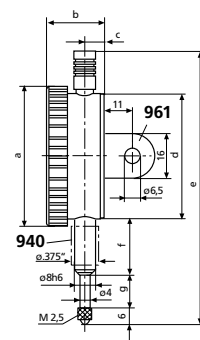
### Applications:

- For safety reasons, the indication range of these dial indicators is limited to just under one pointer rotation.
- This prevents the risk of measuring errors arising from possible additional pointer rotations.

### TECHNICAL DATA

Order no.	4317000		4324250	
Type	810 SB		803 SB	
Measuring span	mm	0.8	0,4	
Readings	mm	0.01		
Type of dial face	40 –0 –40		20 –0 –20	
Error limit, measuring range	µm	7		
Error limit, 1/2 revolution	µm	6		
Error limit, 1/10 revolution	µm	5		
Repeatability $f_w$	µm	3		
Measuring value hysteresis $f_u$	µm	3		
Free stroke	mm	9	4.5	
Measuring force incoming measuring pin	N	0.9 –1.1		0.7 –1.1
Standard	DIN 878			
Shockproof movement	•			
Protective measuring spindle cap	•			
Range per turn	mm	0.8		
Dial color	White			

Order no.	a	b	c	d	e	f	g	Mounting shaft
4317000	mm	mm	mm	mm	mm	mm	mm	mm
4324250	58	23	7.5	52	120	22	15	8
	44	21.6	6.8	37	83	15.5	8	8



### ACCESSORIES

Order no.	Description	Type
4310103	Adapter bushing (.375" / 8 mm)	940
4375010	Lug back, vertical, for 810	961
4375011	Lug back, horizontal, for 810	962
4375020	Lug back, vertical, for 803	966
4375021	Lug back, horizontal, for 803	967