

Marameter 838 EA

Digital outer quick probe

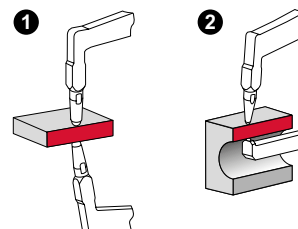


FUNCTIONS

- ON/OFF
- mm/inch
- TOL (enter tolerance limit values)
- ABS (display can be set to zero without losing reference to preset)
- DATA (in connection with data interface)

FEATURES

- High contrast analog and digital LCD
- Tolerance displayed via LED (red/green)
- **Data interface:** Digimatic, USB, Bluetooth (optional accessory)
- **Energy supply:** Battery operation (2x 1.5V AAA)
- **IP protection category:** IP 67
- **Package contains:** instruction manual, battery, test certificate



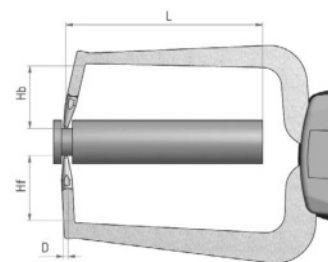
Application:

- Specified measuring programs according to application
- Absolute/relative measuring program

TECHNICAL DATA

Order no.	Type	Measuring range	Resolution	Measuring depth	Error limit	Repeatability	Form of measuring contacts	Measuring contact ball diameter	Measuring force	Bluetooth option
		mm	mm	mm	mm	mm		mm	N	
4495450	838 EA	0–10	0.001, 0.002, 0.005, 0.01, 0.02, 0.05	35	0.015	0.005	1	1.5	0.8–1.2	•
4495451	838 EA	0–20	0.001, 0.002, 0.005, 0.01, 0.02, 0.05	85	0.03	0.01	1	1.5	1.1–1.6	•
4495452	838 EA	0–20	0.001, 0.002, 0.005, 0.01, 0.02, 0.05	85	0.03	0.01	2	1.5	1.1–1.6	•
4495453	838 EA	0–30	0.001, 0.002, 0.005, 0.01, 0.02, 0.05	116	0.04	0.02	1	3	0.9–1.6	•
4495454	838 EA	0–50	0.001, 0.002, 0.005, 0.01, 0.02, 0.05	167	0.05	0.03	1	3	0.8–1.7	•
4495455	838 EA	0–30	0.001, 0.002, 0.005, 0.01, 0.02, 0.05	116	0.04	0.02	2	3	0.9–1.6	•
4495456	838 EA	0–50	0.001, 0.002, 0.005, 0.01, 0.02, 0.05	169	0.05	0.03	2	3	0.8–1.7	•

Order no.	D	Hb	Hf	L
	mm	mm	mm	mm
4495450	1.5	19.1	18.6	35
4495451	1.5	24.6	24.6	85
4495452	1.5	24.6	2.5	85
4495453	3	30	30	116
4495454	3	30	30	167
4495455	3	30	4	116
4495456	3	30	4.3	169



ACCESSORIES

Order no.	Description	Type
4495036	Bluetooth interface for 838 EI/EA, including USB dongle BT4.0	838 BT
4495079	838 USB interface adapter with data connection cable USB (1.5 m)	838 USB
4495083	Interface adapter with data cable digimatic (1.5 m)	838 di (A)



838 BT