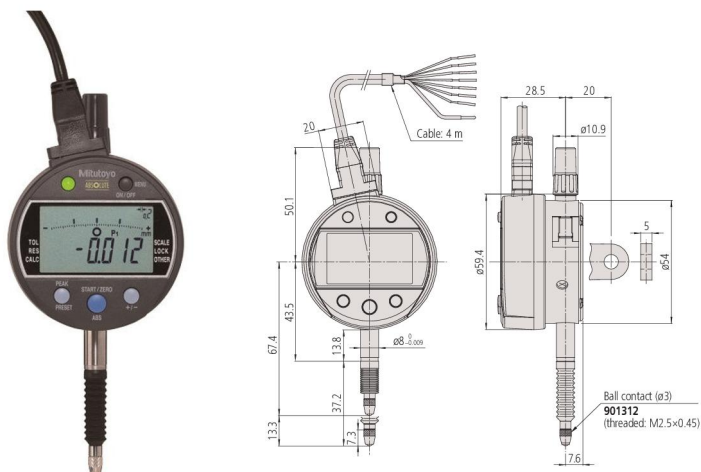


ABSOLUTE Digimatic Indicators Signal ID-C

Series 543

This is an externally-powered Digimatic Indicator with a N-ch open drain –NG, OK, +NG output.

- Dust-protected and protected against splashing water, complying with IEC 60529 (equivalent to IP54)
- Measures MAX/MIN/RANGE (run-out value).
- Saves three different Preset and Tolerance settings.
- Fast measurement frequency mode (detection cycle 50 times/s) for reliable measurement in the peak detection mode (MAX/MIN/RANGE)
- Calculation function Ax. Coefficient A freely definable, x = displacement of the plunger
- Analogue bar graph in the display (12 different scales switchable)
- GO/±NG tolerance judgment function



543-350B

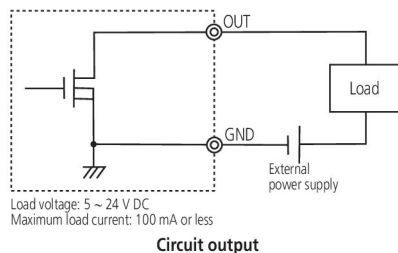
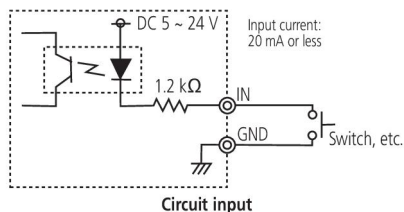
Metric

No.	No. Lug back plate	Range	Range [mm]	Digital step	Maximum Permissible Error E MPE
543-350B	543-350	12,7 mm	12,7 mm	0,001 mm	0,003 mm

No.	H MPE (Hysteresis)	R MPE (Repeatability)	Type	Measuring force [N]	Protection	Mass [g]
543-350B	0,002 mm	0,002 mm	EN ISO Standard	≤2,5	IP54	285

Logic of output signal	Signal name	Tolerance judgment results			Sensor signal synthesizing error Overflow error of display value
		-NG	OK	+NG	
Negative logic	-NG (Orange)	Low	High	High	High
	OK (Green)	High	Low	High	High
	+NG (Brown)	High	High	Low	High
Positive logic	-NG (Orange)	High	Low	Low	Low
	OK (Green)	Low	High	Low	Low
	+NG (Brown)	Low	Low	High	Low

Normal mode, Maximum value detection mode, Minimum value detection mode



Functions	Series 543
PRESET 3x	●
ON/OFF	●
Signal output: (+NG, OK, -NG)	●
Signal input: No-voltage input, (PRESET_RECALL/ZERO, HOLD_RESET)	●
ZERO/ABS	●
Analog bar resolution switchable	●
Function lock	●
GO/±NG judgement via LED	●
GO/±NG judgement	●
Calculation function (with formula)	●

Specifications

Display	LCD, character height 8 mm
Max. response speed	Unlimited
Measurement frequency (MAX/MIN/RANGE)	100 times/s (if the plunger speed >0,1 mm/s the peak value could not be displayed correctly.)
Alarm	Counting value composition error, overflow error, tolerance limit setting error
Stem Ø	8 mm
Contact point	Carbide ball, thread M 2,5 x 0,45 mm
Power supply	DC 5 - 24 V
Delivered	With signal cable 4 m. One end is fixed to the main unit. no connector is supplied for the other end.

Optional accessories

No.	Description
21EZA198	Spindle Lifting Lever, for 12,7mm Range
21JZA295	Spindle Lifting Cable, for Indicator, L=500mm
21EZA105	Spindle Lifting Knob, for 12,5mm, Metric
238774	Silicon rubber boot for ID-C, ID-N, ID-S

Consumable spares

No.	Description
02ACA376	NBR Rubber Boot, for ID-C, ID-N, ID-S
901312	Contact Element Ball Point, 7,3mm Length, Carbide, Metric

