

Internal Digimatic Caliper Gauges

Series 209

- Digital Caliper Gauge enables measurements in hard-to-reach places
- Excellent resistance against water and dust IP67 level



209-905

Metric/Inch		Measuring contacts: carbide ball \varnothing 0,6 mm						
No.	Range [mm]	Accuracy	Type	Measuring force [N]	Mass [g]	A [mm]	B [mm]	L [mm]
209-935	5 - 15	0,015 mm	Fig. 4	0,8-1,2	250	2,3	0,8	35

Metric/Inch		Measuring contacts: carbide ball \varnothing 1,3 mm						
No.	Range [mm]	Accuracy	Type	Measuring force [N]	Mass [g]	A [mm]	B [mm]	L [mm]
209-944	13 - 43	0,04 mm	Fig. 4	1,2-1,7	360	5,7	1,5	

Metric/Inch		Measuring contacts: carbide ball \varnothing 1,5 mm						
No.	Range [mm]	Accuracy	Type	Measuring force [N]	Mass [g]	A [mm]	B [mm]	L [mm]
209-945	15 - 65	0,06 mm	Fig. 2	1-1,8	415	5,5	1,9	
209-946	30 - 60	0,04 mm	Fig. 3	1,2-1,7	370	6,2	1,8	

Metric/Inch		Measuring contacts: carbide ball \varnothing 1 mm						
No.	Range [mm]	Accuracy	Type	Measuring force [N]	Mass [g]	A [mm]	B [mm]	L [mm]
209-936	10 - 30	0,03 mm	Fig. 4	1,1-1,6	270	5,2	1,2	85
209-937	20 - 40	0,03 mm	Fig. 2	1,1-1,6	270	7	1,2	85
209-938	30 - 50	0,03 mm	Fig. 2	1,1-1,6	275	7	1,2	85
209-939	40 - 60	0,03 mm	Fig. 3	1,1-1,6	285	8,3	1,2	85
209-940	50 - 70	0,03 mm	Fig. 3	1,1-1,6	285	8,3	1,2	85
209-941	60 - 80	0,03 mm	Fig. 3	1,1-1,6	290	8,3	1,2	85
209-942	70 - 90	0,03 mm	Fig. 3	1,1-1,6	290	8,3	1,2	85

Metric/Inch		Measuring contacts: carbide ball \varnothing 2 mm						
No.	Range [mm]	Accuracy	Type	Measuring force [N]	Mass [g]	A [mm]	B [mm]	L [mm]
209-947	50 - 80	0,04 mm	Fig. 3	1,2-1,7	370	8,3	2,4	
209-948	70 - 100	0,04 mm	Fig. 3	1,2-1,7	375	8,3	2,4	
209-949	90 - 120	0,04 mm	Fig. 3	1,2-1,7	380	8,3	2,4	

Metric/Inch		Measuring contacts: carbide bevel (R = 0,1 mm)						
No.	Range [mm]	Accuracy	Type	Measuring force [N]	Mass [g]	A [mm]	B [mm]	L [mm]
209-934	2,5 - 12,5	0,015 mm	Fig. 1	0,8-1,2	245	0,7	0,4	12

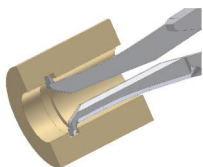


Figure 1

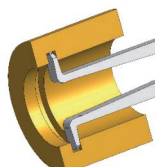


Figure 2

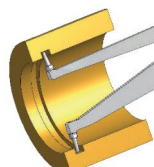


Figure 3

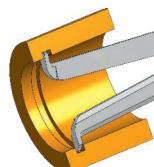


Figure 4

Functions	Series 209
Counting direction switchable	
Tolerance LED (green/red)	

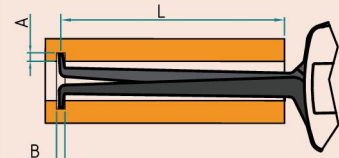
Specifications	
Digital step	0,001 / 0,002 / 0,005 / 0,01 / 0,02 / 0,05 mm
Power supply	2 batteries LR3 (AAA)
Delivered	Including battery and inspection certificate
HOLD	Yes

Optional accessories	
No.	Description
011551	Digimatic Interface Series 209, Digital Caliper Gauge
937387	Digimatic Cable, Round 6-Pin Type, 1m
965013	Digimatic Cable, Round 6-Pin Type, 2m
06AFM380E	USB Input Tool Direct (Digimatic USB), Digi/Digi2, Round 6-Pin Type
02AZD880G	U-WAVE-T, Buzzer Type, Wireless Transmitter
02AZD730G	U-WAVE-T, IP67 Type, Wireless Transmitter
02AZD790E	U-WAVE-T Connection Cable E, Round 6-Pin Type
63AAA438	Holder for Digital Caliper Gauge, for 209-930 up to 209-958

Consumable spares	
No.	Description
011511-1	Battery LR03 (AAA), 4x



209-935



L=Maximum reach of contact arms over workpiece
A=Maximum groove depth
B=Minimum groove width



63AAA438