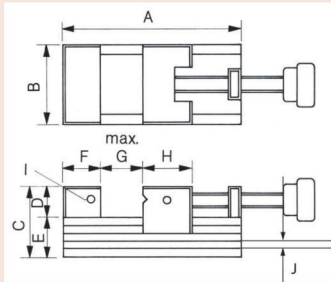


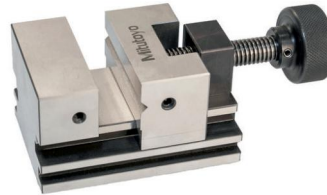
# Precision Vices

## Series 930

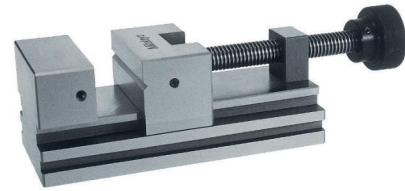
- It is made of tool steel, hardened and precision ground.
- 930-616 with hydraulic system for max. clamping force of 14,7kN
- 930-641 and 930-642 is made of PET plastics to protect workpieces from scratches



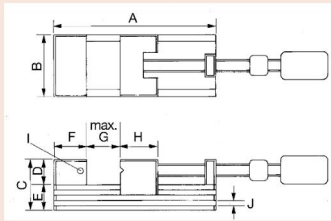
930-602



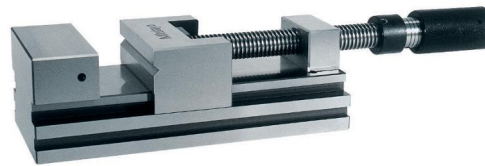
930-611



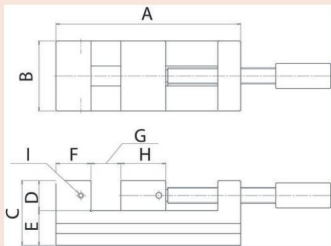
930-602



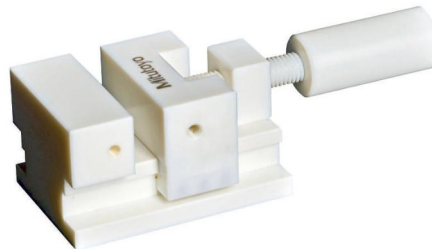
930-616



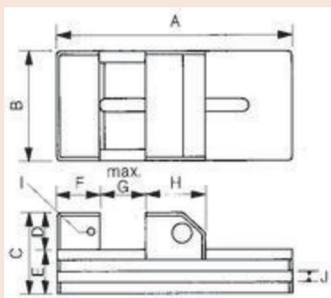
930-616



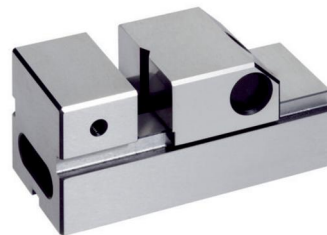
930-641



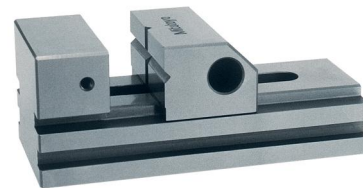
930-641



930-607



930-630



930-607

# Precision Vices

## 1. Standard type with horizontally v-groove in the moveable jaw

No.	Parallelism	Squareness [mm]	A [mm]	B [mm]	C [mm]	D [mm]	E [mm]	F [mm]	G [mm]	H [mm]	I [mm]	J H x D [mm]	Mass [kg]
930-611	0,002/100	0,005/100	90	60	50	25	25	25	30	30	M5	6 x 6	1,6
930-601	0,002/100	0,005/100	160	70	62	30	32	33	80	45	M6	7 x 7	4
930-602	0,002/100	0,005/100	210	90	80	40	40	40	120	50	M6	8 x 7	7,6
930-612	0,002/100	0,005/100	285	120	90	40	50	55	150	70	M6	10 x 7	17,4

## 2. Standard type with hydraulic amplification of the clamping force

No.	Parallelism	Squareness [mm]	A [mm]	B [mm]	C [mm]	D [mm]	E [mm]	F [mm]	G [mm]	H [mm]	I [mm]	J H x D [mm]	Mass [kg]
930-616	0,002 / 100	0,03 / 100	285	120	90	40	50	55	150	70	M6	10 x 7	17,7

## 3. Made of PET Plastic

No.	Parallelism	Squareness [mm]	A [mm]	B [mm]	C [mm]	D [mm]	E [mm]	F [mm]	G [mm]	H [mm]	I [mm]	Mass [kg]
930-641	0,02 / 100	0,03 / 100	90	60	50	25	25	25	30	30	M5	0,35
930-642	0,02 / 100	0,05 / 100	160	70	62	30	32	33	80	45	M6	0,7

## 4. Wrench clamping type vice with horizontally ground V-groove in the moveable jaw

No.	Parallelism	Squareness [mm]	A [mm]	B [mm]	C [mm]	D [mm]	E [mm]	F [mm]	G [mm]	H [mm]	I [mm]	J H x D [mm]	Mass [kg]
930-630	0,002 / 100	0,005 / 100	75	34	35	15	20	20	25	30	M4	Ø 8 x 4	0,38
930-631	0,002 / 100	0,005 / 100	110	45	45	20	25	25	50	35	M5	6 x 6	1
930-632	0,002 / 100	0,005 / 100	285	120	90	40	50	60	150	70	M6	12 x 7	13,5
930-633	0,002 / 100	0,005 / 100	370	175	95	45	50	60	200	110	M8	12 x 10	28,7

## 5. Wrench clamping type vice with quick adjustment and vertically and horizontally ground V-groove in the moveable jaw

No.	Parallelism	Squareness [mm]	A [mm]	B [mm]	C [mm]	D [mm]	E [mm]	F [mm]	G [mm]	H [mm]	I [mm]	J H x D [mm]	Mass [kg]
930-606	0,002 / 100	0,005 / 100	160	70	62	30	32	33	80	45	M6	8 x 7	3
930-607	0,002 / 100	0,005 / 100	210	90	80	40	40	40	120	50	M6	10 x 7	5,8