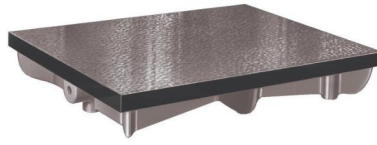


Cast Iron Surface Plates

Series 902

- A ribbed design gives you rigidity with minimum weight, and a special cast iron confers a high degree of wear resistance.



902-304

No.	Dimensions L x W x H [mm]	Accuracy	Mass [kg]
902-301	300 x 300 x 70	According to DIN 876 Grade 1 : fine scraped	15
902-302	400 x 400 x 75	According to DIN 876 Grade 1 : fine scraped	35
902-303	500 x 400 x 90	According to DIN 876 Grade 1 : fine scraped	40
902-304	600 x 500 x 95	According to DIN 876 Grade 1 : fine scraped	65
902-305	800 x 500 x 100	According to DIN 876 Grade 1 : fine scraped	95
902-306	1000 x 750 x 140	According to DIN 876 Grade 1 : fine scraped	210
902-307	1200 x 800 x 140	According to DIN 876 Grade 1 : fine scraped	230
902-308	1500 x 1000 x 180	According to DIN 876 Grade 1 : fine scraped	490
902-309	2000 x 1000 x 210	According to DIN 876 Grade 1 : fine scraped	780
902-101	300 x 300 x 70	According to DIN 876 Grade 3 : fine planed	15
902-102	400 x 400 x 75	According to DIN 876 Grade 3 : fine planed	35
902-103	500 x 400 x 90	According to DIN 876 Grade 3 : fine planed	40
902-104	600 x 500 x 95	According to DIN 876 Grade 3 : fine planed	65
902-105	800 x 500 x 100	According to DIN 876 Grade 3 : fine planed	95
902-106	1000 x 750 x 140	According to DIN 876 Grade 3 : fine planed	210
902-107	1200 x 800 x 140	According to DIN 876 Grade 3 : fine planed	230
902-108	1500 x 1000 x 180	According to DIN 876 Grade 3 : fine planed	490
902-109	2000 x 1000 x 210	According to DIN 876 Grade 3 : fine planed	780