

# Contour Measuring Systems

## CONTRACER CV-3200/4500 Series

Catalog No. E15010(3)



**High-accuracy contour measuring machine with exciting new features**

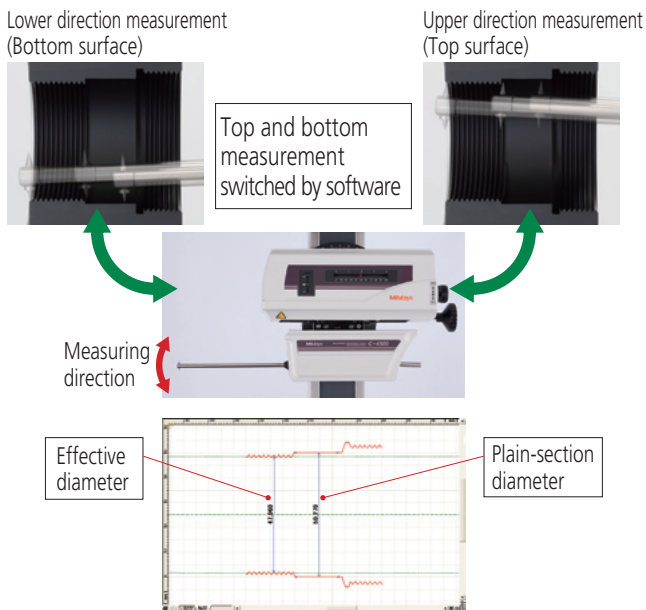
**Mitutoyo**

# CONTRACER CV-4500 Series



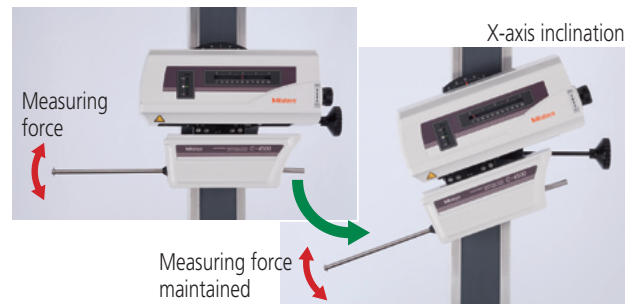
## Continuous top-bottom measurement function for easy measurement of upper and lower surfaces

Upper and lower surfaces can be measured continuously by using Mitutoyo's double-sided conical stylus. This continuous measurement data can be used to facilitate analysis of features that were difficult to measure before, such as the effective diameter of an internal screw-thread.



## Variable measuring force function

The measuring force can be varied in 5 steps by using the software provided (**FORMTRACEPAK**), eliminating the need to adjust the measuring force by switching weights or through positional adjustment. The CV-4500 Series can also maintain the specified measuring force even when tilted.



## Best-in-class displacement accuracy

The CV-4500 Series features a built-in precision arc scale on the Z1 axis (detector) that allows the arc trajectory of the stylus tip to be read directly, minimizing the detector mechanism error and enabling precision, high-resolution measurement. On the X axis (driver) is a linear scale, allowing high-accuracy full-stroke measurement.

Accuracy \_\_\_\_\_  
 Z1 axis (detector unit):  $\pm (0.8 + |2H| / 100) \mu\text{m}$   
 H = Measurement height from the horizontal position (mm)  
 X axis (drive unit):  $\pm(0.8+0.01L) \mu\text{m}^*1$   
 L = drive length (mm)

Resolution \_\_\_\_\_  
 Z1 axis (detector unit) : 0.02 $\mu\text{m}$   
 X axis (drive unit) : 0.05 $\mu\text{m}$

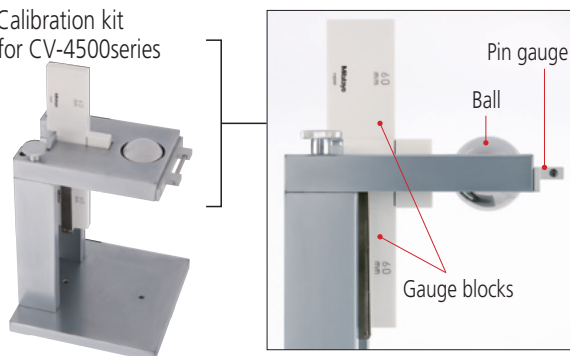
\*1 These specifications apply to the CV-4500S4/H4/W4. For specifications of other products in the series, see Specifications on page 14.

## Continuous top-bottom measurement allows hassle-free one-step calibration

(Patent pending in Japan)

The one-step calibration kit supplied with the CV-4500 Series has been upgraded to enable easy calibration of the double-ended conical stylus featuring a contact on both the top and the bottom. Fiddly work such as calibrating the Z1-axis gain, symmetry, and stylus radius can now be carried out in a single operation.

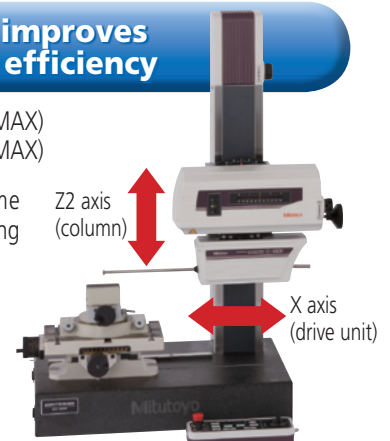
- Calibration kit for CV-4500series



## Fast traverse improves measurement efficiency

X axis (drive unit) : 80mm/s (MAX)  
 Z2 axis (column) : 30mm/s (MAX)

The total measurement time can be shortened by speeding up the traverse movements.



Mitutoyo

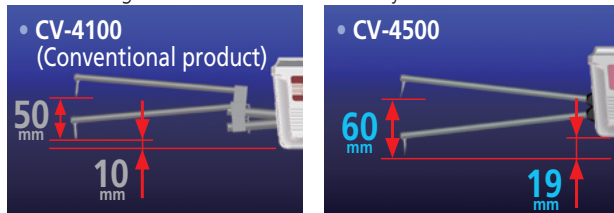
# New top-bottom continuous measurement and variable measuring force enable efficient, highly accurate measurement of a wide range of objects.

# CV-4500

## Detector with new arm design

Expands measurement range while reducing workpiece interference  
Mitutoyo's newly designed detector arm lowers workpiece interference while expanding the measurement range in the Z1 axis (detector).

- When using the SPH-71 one-sided cut stylus

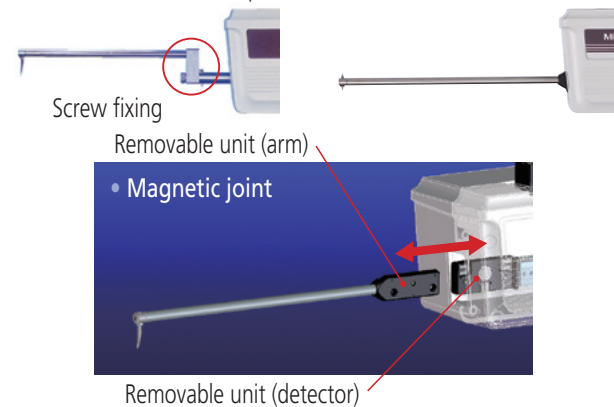


Detector measurement range expanded by 10 mm

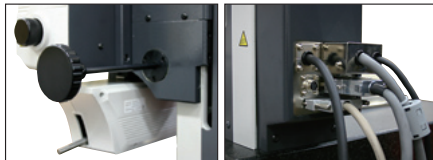
## One-touch arm attachment (Patent pending in Japan)

The arm mount uses a magnetic joint for quick and easy arm replacement. The mount also includes a safety mechanism.

- CV-4100 (Conventional product)
- CV-4500



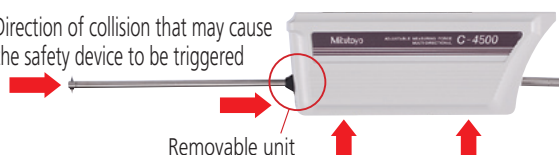
All detector and drive unit cables are housed inside the main unit to eliminate any risk of abrasion and guarantee trouble free, high-speed operation.



## Auto stop feature assures safety even during high-speed movement

The detector includes a safety mechanism (auto stop upon collision) to assure measurement safety even during high-speed movement. If the arm is removed or shifts during measurement, the safety mechanism is triggered and stops the machine.

- Direction of collision that may cause the safety device to be triggered



## Excellent operability

### Remote-control unit enables safe, easy & fast measurement

The remote-control unit lets you move quickly from positioning to measurement. The unit also features an emergency stop switch and speed control knob for added safety while the machine is moving at high speeds.



New Remote Control Box

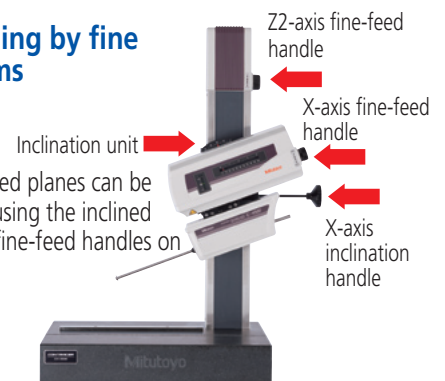
### Remarkable Ease of Operation

Incorporation of an ABS scale in the Z2 axis eliminates the need for wearisome origin point re-setting conventionally required for every step of repeated measurements over stepped or multiple sections.



### Simple positioning by fine feed mechanisms

Small holes and inclined planes can be efficiently measured using the inclined X-axis drive unit and fine-feed handles on the X and Z2 axes.



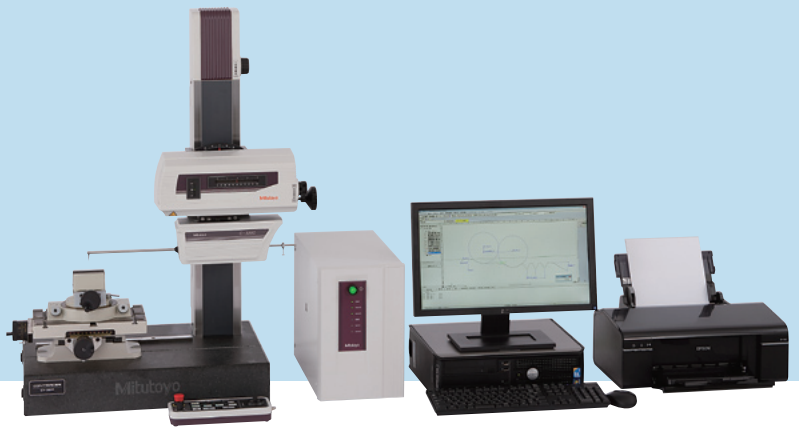
## Simplified CNC Function

With the support for a wide range of optional peripherals designed for use with the CNC Form Measuring Unit enables simplified CNC measurement.

- $\theta 1$ -axis Rotary unit: Automatic circular-form measurement
- $\theta 2$ -axis Rotary unit: Automatic multiple-section continuous measurement



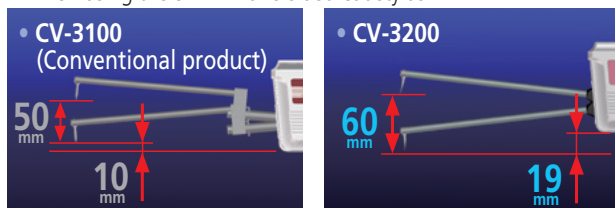
# CONTRACER CV-3200 Series



## Detector with new arm design

Expands measurement range while reducing workpiece interference  
Mitutoyo's newly designed detector arm lowers workpiece interference while expanding the measurement range in the Z1 axis (detector).

- When using the SPH-71 one-sided cut stylus

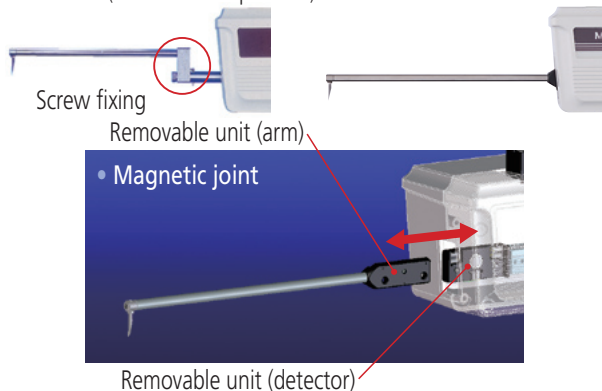


Detector measurement range expanded by 10 mm

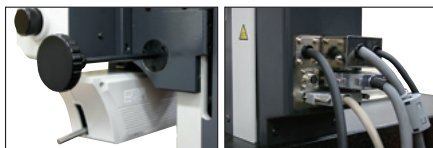
### One-touch arm attachment (Patent pending in Japan)

The arm mount uses a magnetic joint for quick and easy arm replacement. The mount also includes a safety mechanism.

- CV-3100 (Conventional product)
- CV-3200



All detector and drive unit cables are housed inside the main unit to eliminate any risk of abrasion and guarantee trouble free, high-speed operation.



### Auto stop feature assures safety even during high-speed movement

The detector includes a safety mechanism (auto stop upon collision) to assure measurement safety even during high-speed movement. If the arm is removed or shifts during measurement, the safety mechanism is triggered and stops the machine.

- Direction of collision that may cause the safety device to be triggered

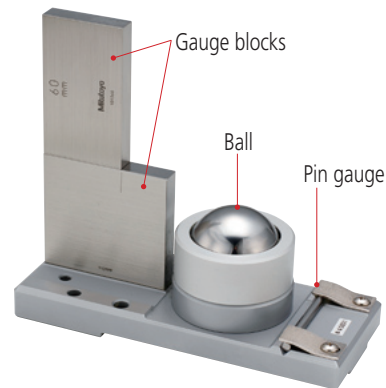


**Mitutoyo**

## Hassle-free one-step calibration

The CV-3200 Series provides a dedicated calibration gage that lets you carry out fiddly work such as calibrating the Z1-axis gain, symmetry, and stylus radius in a single operation. Calibration of upward measurement is also possible by using Mitutoyo's optional calibration stage.

- Calibration kit for CV-3200series



## Best-in-class displacement accuracy

The CV-3200 Series features a built-in precision arc scale on the Z1 axis (detector) that allows the arc trajectory of the stylus tip to be read directly, minimizing the detector mechanism error and enabling precision, high-resolution measurement. On the X axis (driver) is a linear scale, allowing high-accuracy full-stroke measurement.

Accuracy \_\_\_\_\_  
 Z1 axis (detector unit):  $\pm (1.6 + |2H|/100) \mu\text{m}$   
 H = Measurement height from the horizontal position (mm)  
 X axis (drive unit):  $\pm(0.8+0.01L) \mu\text{m}^{*1}$   
 L = drive length (mm)

Resolution \_\_\_\_\_  
 Z1 axis (detector unit):  $0.04 \mu\text{m}$   
 X axis (drive unit):  $0.05 \mu\text{m}$

\*1 These specifications apply to the CV-3200S4/H4/W4. For specifications of other products in the series, see Specifications on page 14.

**Best-in-class accuracy, high-speed movement, and new detector arm design enable hassle-free, highly accurate measurement.**

# CV-3200

## Excellent operability

### Remote-control unit enables safe, easy & fast measurement

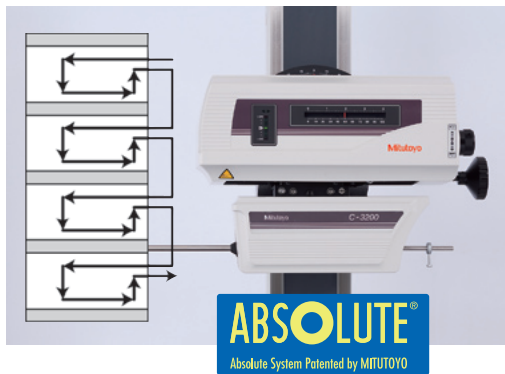
The remote-control unit lets you move quickly from positioning to measurement. The unit also features an emergency stop switch and speed control knob for added safety while the machine is moving at high speeds.



New Remote Control Box

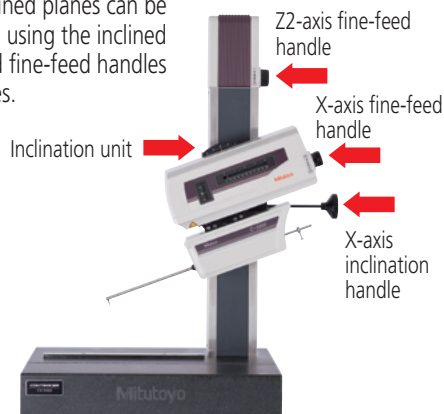
### Remarkable Ease of Operation

Incorporation of an ABS scale in the Z2 axis eliminates the need for wearisome origin point re-setting conventionally required for every step of repeated measurements over stepped or multiple sections.



### Simple positioning by fine feed mechanisms

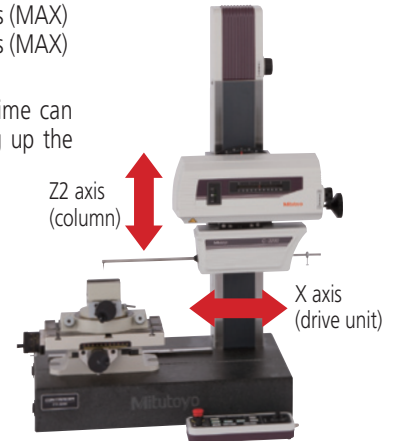
Small holes and inclined planes can be efficiently measured using the inclined X-axis drive unit and fine-feed handles on the X and Z2 axes.



## Fast movement improves measurement efficiency

X axis (drive unit) : 80mm/s (MAX)  
Z2 axis (column) : 30mm/s (MAX)

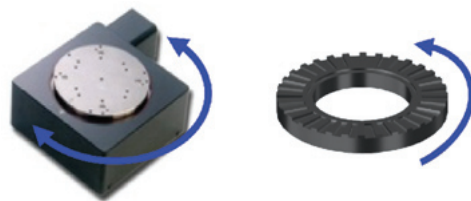
The total measurement time can be shortened by speeding up the movement.



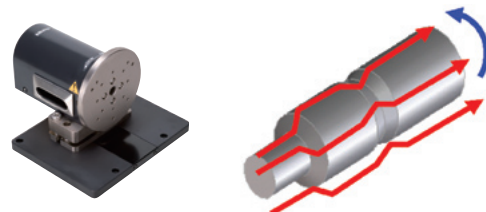
## Simplified CNC Function

With the support for a wide range of optional peripherals designed for use with the CNC Form Measuring Unit enables simplified CNC measurement.

- $\theta 1$ -axis Rotary unit: Automatic circular-form measurement



- $\theta 2$ -axis Rotary unit: Automatic multiple-section continuous measurement



# Contour Analysis Software: FORMTRACEPAK

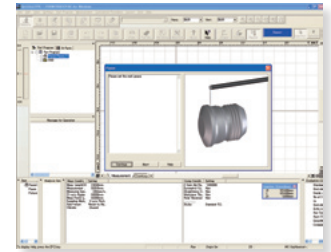
FORMTRACEPAK functions offer total support for measurement system control, surface roughness analysis, contour analysis, contour tolerancing, and inspection report creation.



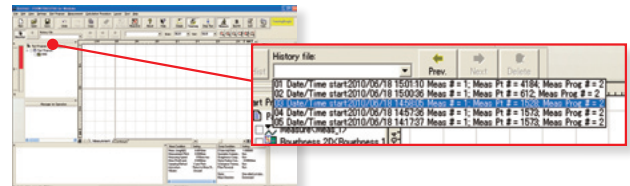
## Measurement control

To make only a single measurement, you can create a part program in the single mode. To measure multiple workpieces of an identical shape, you can use the teaching mode.

FORMTRACEPAK supports the new top-bottom continuous measurement and variable measuring force functions of the CV-4500 Series (see page 2 for details), providing an even higher level of usability. Since you can embed the entire flow, from making measurement to printing a report, into a part program, you can efficiently make measurements, analyze data, and output a report. A function is also provided that enables you to insert comments accompanied with photographs at desired timings, enabling you to embed the roles described in a measurement procedure document that specifies important points such as work settings.



To make immediate measurements, you can use the pull-down menu to easily select and call up the desired operating procedure.



## Multiple language support (15 languages)

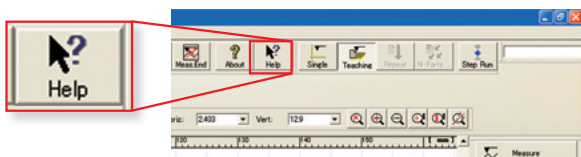
You can switch the language\* to be used in the measurement, analysis, and layout windows.

After measurements have been made, you can switch to another language and create a report in that language. This function can be used worldwide.

\* Supported languages: Japanese, English, German, French, Italian, Spanish, Polish, Hungarian, Swedish, Czech, Simplified Chinese, Traditional Chinese, Korean, Turkish, Portuguese.

## Online help function\*

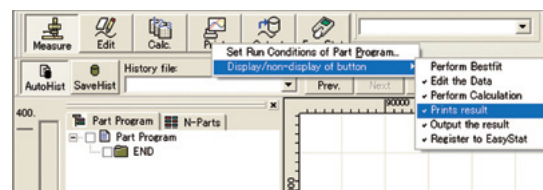
Online help that can be viewed any time is incorporated into the software. In addition to index and keyword searches, a status saving help button, which displays menus and Windows help with a click of the mouse, is provided.



\* Online help function supports only Japanese and English.

## Button-editing function

You can hide buttons that are not used frequently. For example, you can choose to display only those buttons that are used frequently and increase the size of the displayed graphics window, thereby customizing the window to suit your needs.



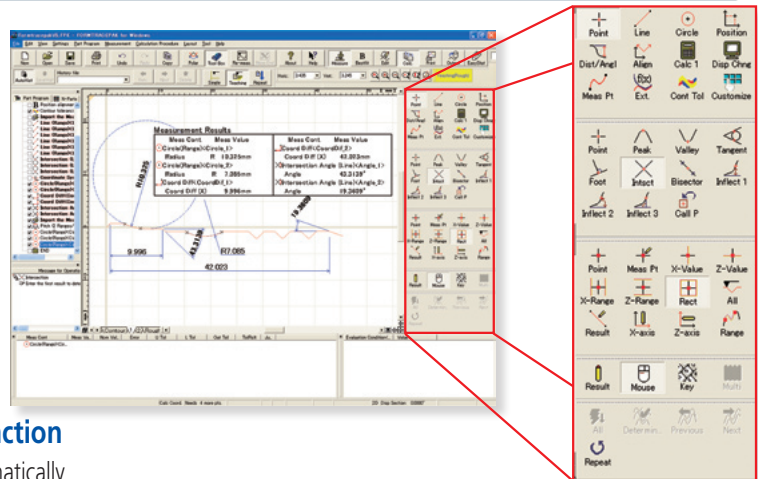
## Simple statistical commands

You can perform statistical calculations of contour analysis results without using a separate program such as Excel.

## Contour Analysis

### Contour analysis function

A wide variety of commands, which form the basic elements for analysis, are provided, including those for points (10 kinds), lines (6 kinds), and circles (6 kinds). A rich set of commands that combine these elements to calculate angles, pitches, and distances, a contour tolerancing function, and a design value generation function are also provided as standard features. These functions, combined with the function that allows you to customize the calculation command buttons by hiding less frequently used commands, let you tailor the window according to the user environment.



### Circle and line automatic determination function

Using the circle/line auto-fitting command, you can automatically calculate all circles and lines contained in the data without having to click the command button each time.

### Removal of abnormal points function

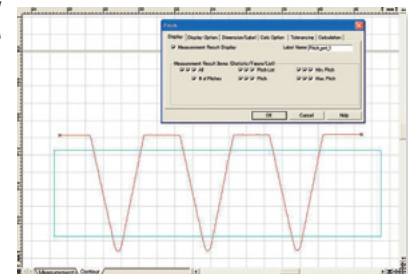
Irregular defects in the data are filtered out from the calculation. This function can be effective when specifying the calculation range for locations at which the boundary between circle and line is difficult to determine.

### Text output of the calculation result and graphics data

You can output the calculation result as text (in csv or txt format), output graphics data obtained from measurements as point-string data to a text file or CAD file (in the DXF or IGES format), or copy the data to the clipboard. Combined with commercial document or statistical processing software, this feature can be used to share data with computers that do not have dedicated analysis software installed or execute CAD-based reverse engineering.

### Simple pitch calculation function

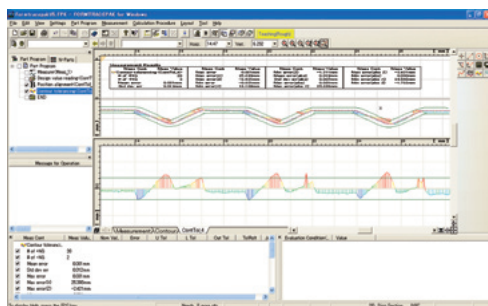
You can efficiently analyze the pitch between identical shapes, such as a screw pitch or the distance between circles (center-to-center pitch), by simply specifying the desired range using mouse operations.



Example of range specification for screw thread pitch with rectangular tool.

### Contour-tolerancing function as a standard feature

The best-fit processing function that moves the coordinate values of the design data and measurement data to the optimum positions is provided as a standard feature. Since the tolerancing results can be visually displayed as graphics, displayed as tolerance values and tolerance expansions in each coordinate, or output as a text file, they can be utilized as feedback data for machining systems.



Example of contour-tolerancing result

```

NAME:PRO
NO      NOMINAL POINT(C,LY)  NORMAL VECTOR  ERROR  RESULT
1      12.354, -1.084, -0.878  -0.997  -0.005  25/IN
2      12.454, -1.084, -0.815  -1.000  -0.004  25/IN
3      12.354, -1.085, -0.902  -0.997  -0.004  25/IN
4      12.354, -1.088, -0.942  -0.999  -0.004  25/IN
5      12.754, -1.088, 0.032  -0.999  -0.004  25/IN
6      12.854, -1.087, 0.057  -0.998  -0.004  25/IN
7      12.354, -1.088, 0.020  -1.000  -0.004  25/IN
8      13.054, -1.088, 0.000  -0.999  -0.005  25/IN
9      13.154, -1.088, -0.020  -0.999  -0.004  25/IN
    
```

Example of contour tolerancing results output as numeric values

# Contour Analysis Software: FORMTRACEPAK

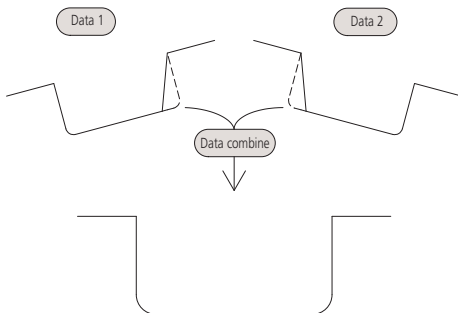
## Contour Analysis

### Design value generation function

You can generate design data from CAD data (DXF or IGES file) or text data. Furthermore, since you can also convert measurement data into design data, you can save parts data prior to use (testing) as design data and effectively utilize it for checking the wear following use (testing).

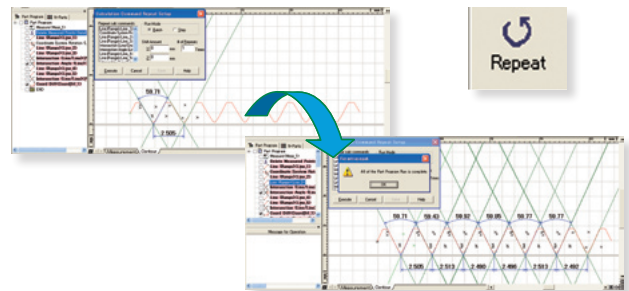
### Data combination function

You can combine partial data collected separately from a workpiece (made necessary due to shape characteristics) into a single graphic for convenient analysis.



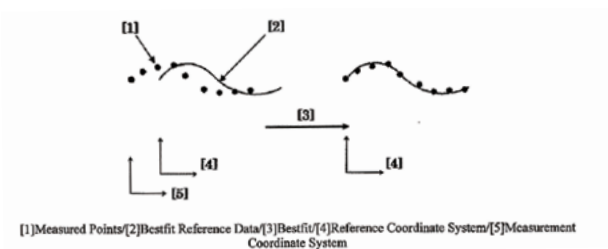
### Calculation command repetition setting

When identical shapes have the same pitch, you can analyze all of the shapes in a batch by specifying a single analysis location and the pitch.



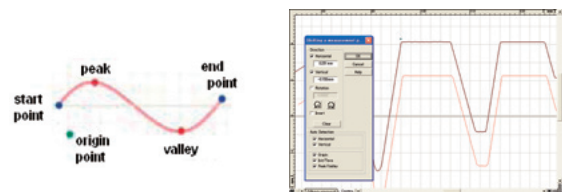
### Best-fit processing function for measurement point strings

This function tries to fit the measurement points to the stored reference data on the same coordinate system. It can eliminate the effects of a shift that may occur when setting the workpiece during automatic analysis.



### Data superimposition command

You can superimpose two sets of data by detecting their characteristic points. Use the mouse to drag and move the measurement point strings to the desired positions to be superimposed.



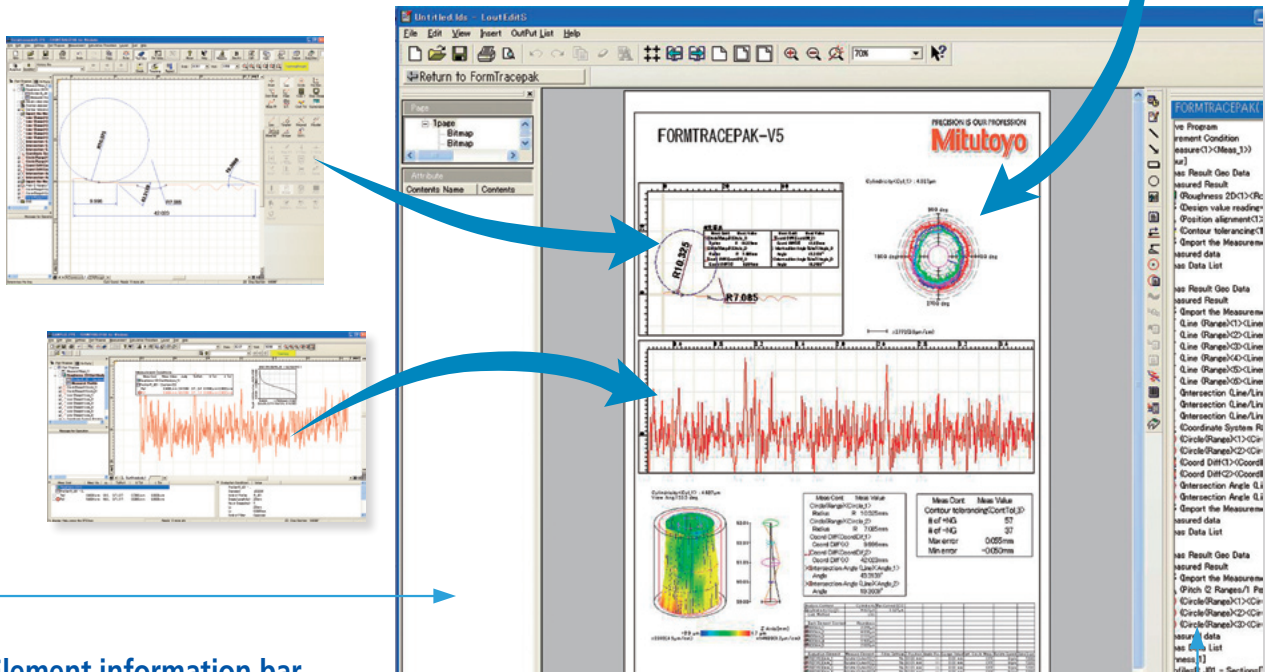
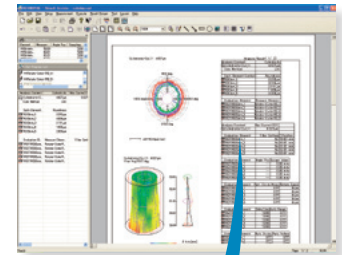


### Integrated layout

You can use simple operations to lay out graphics obtained from measurements as well as measurement results for surface roughness, contour, and roundness on a single page.

Furthermore, since the program now allows you to specify a saved file and paste it, you can easily paste results from multiple files.

Note: the optional ROUNDPAK roundness/cylindricity analysis program is required. (Ver. 7 or higher)



#### Element information bar

This bar displays the attribute values of the pasted items, allowing you to easily check the contents of the pasted measurement data files.

#### System layout printing

By simply selecting the items to be output, you can automatically lay out the page to be printed.

Use this feature when you wish to simplify the printing task.



#### Report creation function

You can freely assemble measurement results/conditions/graphics as well as comments/circles/lines/arrows, and print them out in a measurement result report.

Furthermore, since you can paste bitmap files, you can also add a workpiece image or company logo to the layout.

You can also save the created layout and use it again later for similar measurements.

#### PDF file output

You can output the PDF-format file of the measurement result report.

#### Element insertion bar

Using the mouse to drag and drop the analysis content displayed in the element insertion bar, you can paste it into the layout.

From the contour analysis result, you can also select the analysis result for a circle or line alone and paste it in position.

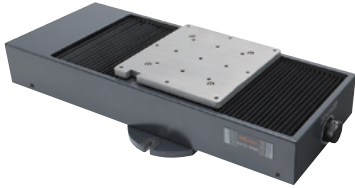
#### Saving the result as a web page

Since you can save the result in html or mhtml format, which can be displayed using Internet Explorer or Microsoft Word, you can check the result even on a PC on which no layout-editing program is installed.

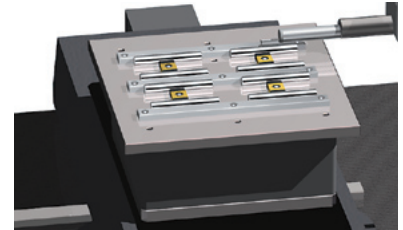
# Optional Accessories for Automatic Measurement

## Y-axis table: 178-097

Enables efficient, automatic measurement of multiple aligned workpieces and multiple points on a single measurement surface.



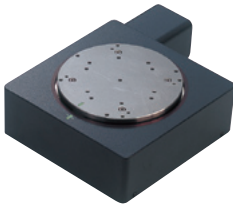
Travel range	200mm
Resolution	0.05μm
Positioning accuracy	±3μm
Drive speed	Max 80mm/s
Maximum load	50kg
Mass	28kg



## Rotary Table θ1-axis table: 12AAD975\*

For efficient measurement in the axial/transverse directions. When measuring a cylindrical workpiece, automatic alignment can be performed in combination with the Y-axis table.

\* θ1-axis mounting plate (12AAE630) is required when directly installing on the base of the CV-3200/4500 series.



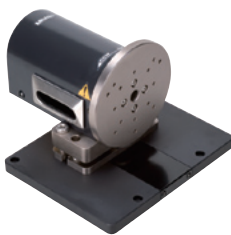
Displacement	360°
Resolution	0.004°
Maximum load	12kg
Rotational speed	Max 10°/s
Mass	7kg



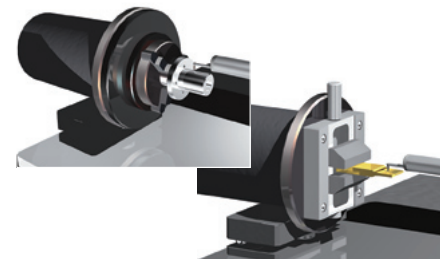
## Rotary Table θ2-axis unit: 178-078\*

You can measure multiple points on a cylindrical workpiece and automate front/rear-side measurement.

\* θ2-axis mounting plate (12AAE718) is required when directly installing on the base of the CV-3200/4500 series.



Displacement	360°
Resolution	0.0072°
Maximum load (loading moment)	4kg (343 N·cm or less)
Rotational speed	Max 18°/s
Mass	5kg



## Centering chuck (ring operated): 211-032

This chuck is useful when measuring small workpieces. You can easily clamp them with its knurled ring.



Retention range	Inner latch	OD: ø1 - ø36mm
	Inner latch	ID: ø16 - ø69mm
	Outer latch	OD: ø25 - ø79mm
Dimensions	ø118x41mm	
Mass	1.2kg	

## Micro-chuck: 211-031

This chuck is suitable for clamping extra-small diameter workpieces (ø1 mm or less), which cannot be retained with the centering chuck.

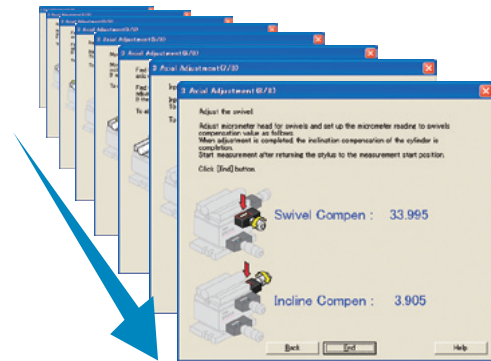


Retention range	OD: ø0.2 - ø1.5mm
Dimensions	ø107 x48.5mm
Mass	0.6kg

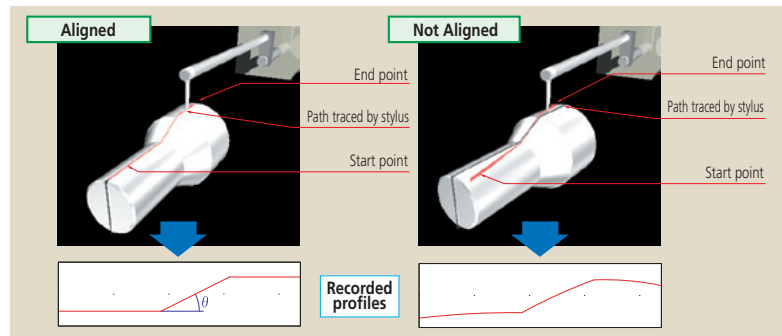
# Optional Accessories

## 3-axis Adjustment Table: 178-047

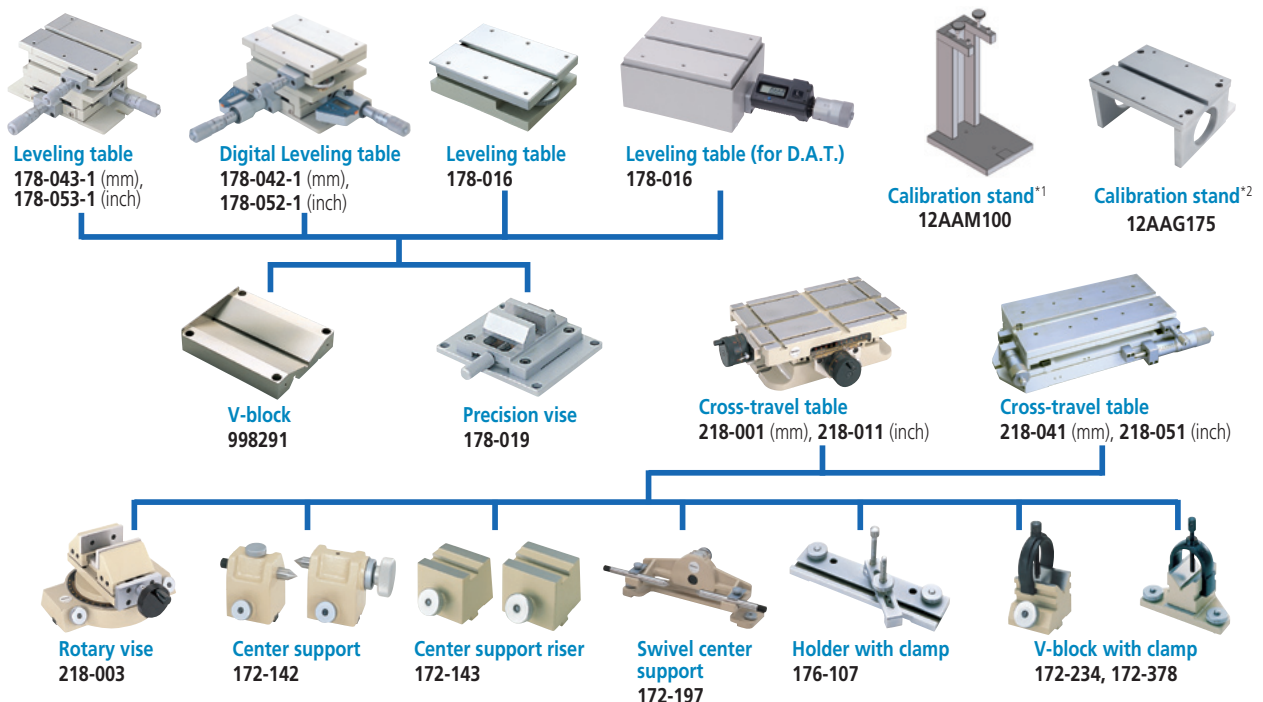
This table helps make the adjustments required when measuring cylindrical surfaces. The corrections for the pitch angle and the swivel angle are determined from a preliminary measurement and the Digimatic micrometers are adjusted accordingly. A flat-surfaced workpiece can also be leveled with this table. By using Mitutoyo's 3-axis adjustment table, the workpiece can be aligned and leveled easily, simply by following the FORMTRACEPAK guidance. No experience or special expertise is required.



Guidance display when using 3-axis adjustment table



## Table and fixture systems



\*1 Required for calibrating upward measurement of CV-3200 series.

\*2 Required for calibrating in bulk by mounting straight arm/small-hole stylus arm without using cross-travel table and Y-axis table.

# Optional Accessories

## Vibration isolators

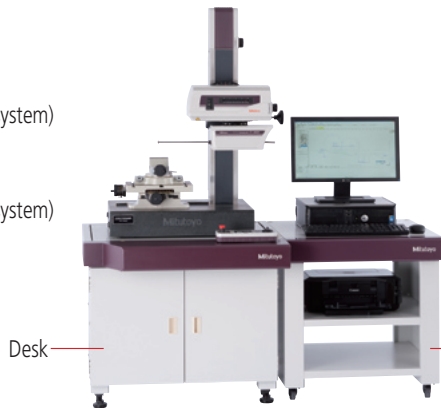
### Desk types

Desk type\*1  
(Stand integrated type, air system)  
**No.12AAK110**

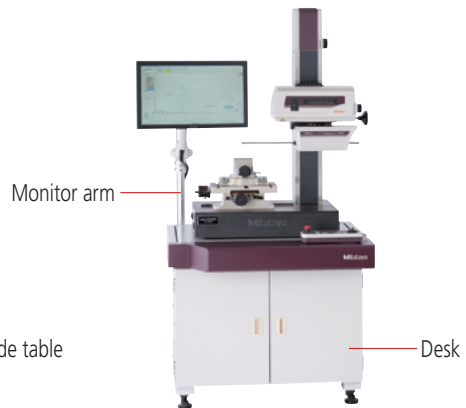
Desk type\*2  
(Stand integrated type, air system)  
**No.178-119**

Monitor arm\*3  
**No.12AAK120**

Side table\*3  
**No.12AAL019**



Example combination: with side table but no monitor arm (tester and PC not included)



Example combination: with monitor arm but no side table\*4 (tester and PC not included)

\*1 For models with a product code that ends in **S4, S8, H4, or H8**.

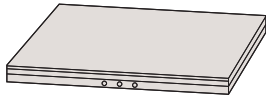
\*2 For models with a product code that ends in **W4 or W8** (wide base models).

\*3 Used together with vibration isolator (**No.12AAK110**).

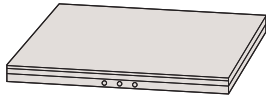
\*4 User to provide a printer rack.

### Desktop types

Manually charged pneumatic type\*1  
**No.178-023**

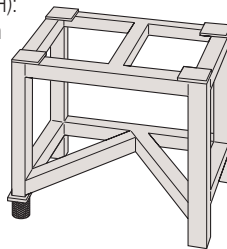


Automatically charged pneumatic type\*1  
**No.178-025**



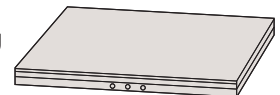
Stand for Desktop type for  
**No.178-023** and  
**No.178-025**.

External size (WxDxH):  
640x470x660mm  
Mass: 25kg  
**No.178-024**



Measurement Workbench  
(for standard base)  
External size (WxDxH):  
900x750x740mm  
Maximum loading: 300kg  
**No.12AAQ587**

Automatically charged  
pneumatic type\*2  
**No.178-115**



Measurement Workbench  
(for wide base)  
Stand for Desktop type for  
**No.178-115**.

External size (WxDxH):  
1500x900x740mm  
Maximum loading: 800kg  
**No.12AAQ583**

\*1 For models with a product code that ends in **S4, S8, H4, or H8**.

\*2 For models with a product code that ends in **W4 or W8** (wide base models).

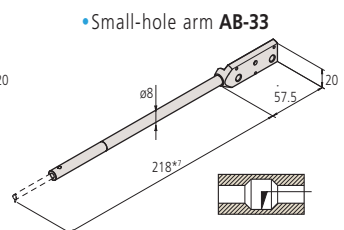
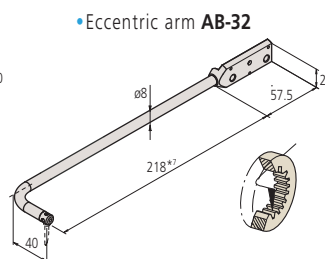
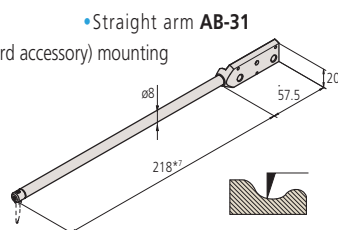
## Arms

Description	Arm No.	Parts No.	Applicable stylus No.
Straight arm	<b>AB-31</b> *5	<b>12AAM101</b>	<b>SPH-5</b> *, <b>6</b> *, <b>7</b> *, <b>8</b> *, <b>9</b> *, <b>SPHW</b> *6- <b>56,66,76</b>
Eccentric arm	<b>AB-32</b>	<b>12AAM102</b>	<b>SPH-5</b> *, <b>6</b> *, <b>7</b> *, <b>8</b> *, <b>9</b> *, <b>SPHW</b> *6- <b>56,66,76</b>
Small-hole arm	<b>AB-33</b>	<b>12AAM103</b>	<b>SPH-41, 42, 43</b>

\*5 Standard accessory

\*6 Stylus for CV-4500 series

\*7 One-sided cut stylus SPH-71 (standard accessory) mounting



# Styli

Stylus name	Stylus No.	Parts No.	Application arm No.	H (mm)
Double-sided conical stylus*1	SPHW-56	12AAM095*2	AB-31, AB-32	20
	SPHW-66	12AAM096	AB-31, AB-32	32
	SPHW-76	12AAM097	AB-31, AB-32	48
One-sided cut stylus	SPH-51	354882	AB-31, AB-32	6
	SPH-61	354883	AB-31, AB-32	12
	SPH-71	354884 *2*3	AB-31, AB-32	20
	SPH-81	354885	AB-31, AB-32	30
	SPH-91	354886	AB-31, AB-32	42
	SPH-52	354887	AB-31, AB-32	6
Intersecting cut stylus	SPH-62	354888	AB-31, AB-32	12
	SPH-72	354889	AB-31, AB-32	20
	SPH-82	354890	AB-31, AB-32	30
	SPH-92	354891	AB-31, AB-32	42
Cone stylus Tip angle 30° Sapphire tipped	SPH-53	354892	AB-31, AB-32	6
	SPH-63	354893	AB-31, AB-32	12
	SPH-73	354894	AB-31, AB-32	20
	SPH-83	354895	AB-31, AB-32	30
	SPH-93	354896	AB-31, AB-32	42
Cone stylus Tip angle 30° Carbide-tipped	SPH-56	12AAA566	AB-31, AB-32	6
	SPH-66	12AAA567	AB-31, AB-32	12
	SPH-76	12AAA568	AB-31, AB-32	20
	SPH-86	12AAA569	AB-31, AB-32	30
Cone stylus Tip angle 20° Carbide-tipped	SPH-96	12AAE570	AB-31, AB-32	42
	SPH-57	12AAE865	AB-31, AB-32	6
	SPH-67	12AAE866	AB-31, AB-32	12
Cone stylus Tip angle 20° Carbide-tipped	SPH-77	12AAE867	AB-31, AB-32	20
	SPH-87	12AAE868	AB-31, AB-32	30
	SPH-97	12AAE869	AB-31, AB-32	42
Cone stylus Tip angle 50° Diamond tipped	SPH-79	355129	AB-31, AB-32	20
Knife edge stylus	SPH-54	354897	AB-31, AB-32	6
	SPH-64	354898	AB-31, AB-32	12
	SPH-74	354899	AB-31, AB-32	20
	SPH-84	354900	AB-31, AB-32	30
	SPH-94	354901	AB-31, AB-32	42
Ball stylus	SPH-55	354902	AB-31, AB-32	6
	SPH-65	354903	AB-31, AB-32	12
	SPH-75	354904	AB-31, AB-32	20
	SPH-85	354905	AB-31, AB-32	30
	SPH-95	354906	AB-31, AB-32	42
Small hole stylus*4	SPH-41	12AAM104	AB-33	2
	SPH-42	12AAM105	AB-33	4
	SPH-43	12AAM106	AB-33	6.5

\*1 Stylus for CV-4500 series

\*2 Standard accessory of CV-4500 series

\*3 Standard accessory of CV-3200 series

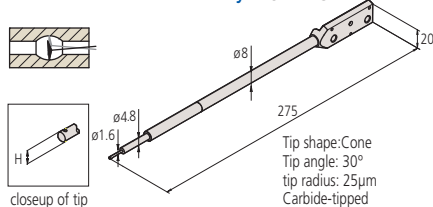
\*4 Styli SPH-21, 22, and 23 for CV-3100/4100 series are not available.

## Arm stylus (comprising an arm and stylus)

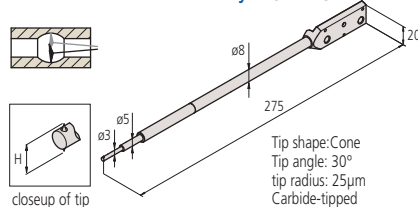
Arm stylus name	Stylus No.	Parts No.	H (mm)
Double-sided small hole arm stylus	SPHW-31	12AAM108	2.4
	SPHW-32	12AAM109	5
	SPHW-33	12AAM110	9

\*5 Arm Stylus for CV-4500 series

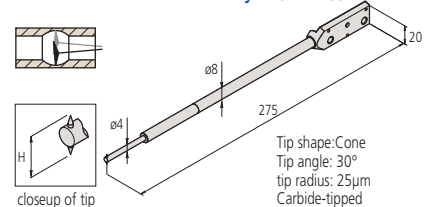
### Double-sided small hole arm stylus SPHW-31



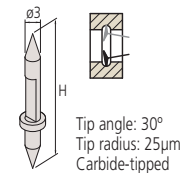
### Double-sided small hole arm stylus SPHW-32



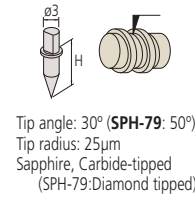
### Double-sided small hole arm stylus SPHW-33



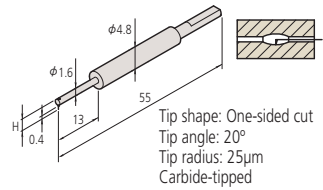
### Double-sided conical stylus



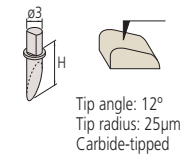
### Cone stylus



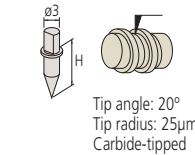
### Small hole stylus SPH-41



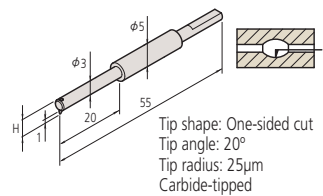
### One-sided cut stylus



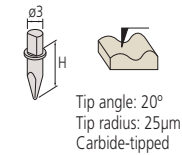
### Cone stylus



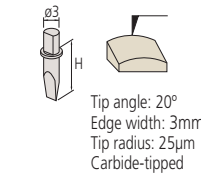
### Small hole stylus SPH-42



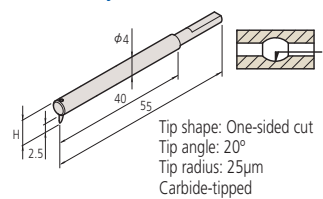
### Intersecting cut stylus



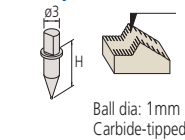
### Knife edge stylus



### Small hole stylus SPH-43



### Ball stylus





# Specifications

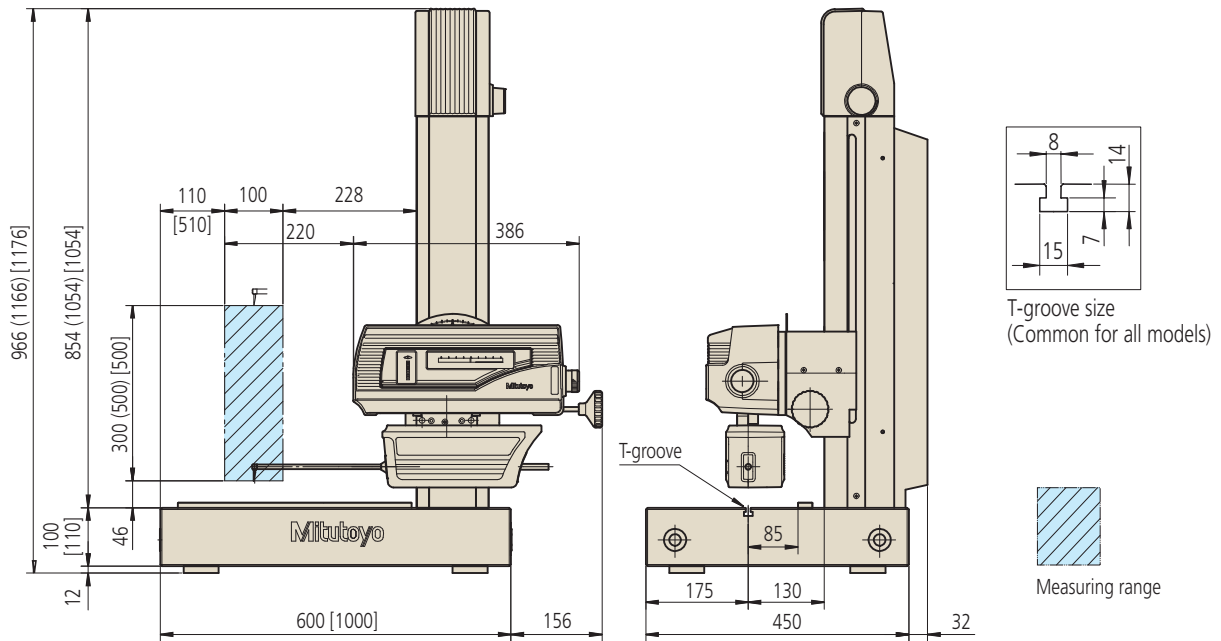
Model		CV-3200S4	CV-3200H4	CV-3200W4	CV-3200S8	CV-3200H8	CV-3200W8
		CV-4500S4	CV-4500H4	CV-4500W4	CV-4500S8	CV-4500H8	CV-4500W8
Measuring range	X axis	100mm			200mm		
	Z1 axis (detector unit)	60mm (±30mm in horizontal situation)					
Z2 axis (column) travel range		300mm	500mm		300mm	500mm	
Detector (Z1 axis (detector unit))	Scale unit	Arc scale					
	Resolution	CV-3200series: 0.04µm, CV-4500series: 0.02µm					
	Stylus up/down motion	Arc movement					
	Measuring direction	Both pulling and pushing directions					
	Measuring face direction	CV-3200 series: Downward or upward CV-4500 series: Both upward and downward (direction switch from FORMTRACEPAK)					
	Measuring force	CV-3200 series: 30mN (by adjusting weight) CV-4500 series: 10, 20, 30, 40, 50mN (Setting measuring force FORMTRACEPAK)					
	Stylus traceable range	Ascent 77°, Descent 83° (with one-sided cut stylus: standard accessory)					
Drive unit	Scale unit	X axis	Separate type linear encoder				
		Z2 axis (column)	ABS encoder				
	Resolution	X axis	0.05µm				
		Z2 axis (column)	1µm				
	Drive speed	X axis	0 - 80mm/s and manual operation				
		Z2 axis (column)	0 - 30mm/s and manual operation				
	Measuring speed	X axis	0.02 - 5mm/s				
Straightness (when the X axis is horizontal)	X axis	0.8µm/100mm			2µm/200mm		
X axis inclination angle	X axis	±45°					
Accuracy (20°C)	CV-3200 Series	X axis	±(0.8 + 0.01L) µm L = Drive length (mm) Wide range: 1.8µm/100mm Narrow range: 1.05µm/25mm			±(0.8 + 0.02L) µm L = Drive length (mm) Wide range: 4.8µm/200mm Narrow range: 1.3µm/25mm	
		Z1 axis (column)	±(1.6 +  2H /100) µm H = Measurement height from the horizontal position				
	CV-4500 Series	X axis	±(0.8 + 0.01L) µm L = Drive length (mm) Wide range: 1.8µm/100mm Narrow range: 1.05µm/25mm			±(0.8 + 0.02L) µm L = Drive length (mm) Wide range: 4.8µm/200mm Narrow range: 1.3µm/25mm	
		Z1 axis (column)	±(0.8 +  2H /100) µm H = Measurement height from the horizontal position				
External dimensions (WxDxH)	Main unit	756x482 x966mm	756x482 x1166mm	1156x482 x1176mm	766x482 x966mm	766x482 x1166mm	1166x482 x1176mm
	Controller	221x344x490mm					
	Remote box	248x102x62.2mm					
Mass	Main unit	140kg	150kg	220kg	140kg	150kg	220kg
	Controller	14kg					
	Remote box	0.9kg					
Operating temperature range		15 - 25°C (within ±1K temperature fluctuation on calibration and measurement)					
Operating humidity range		20 - 80%RH (with no condensation)					
Storage temperature range		-10 to 50°C					
Storage humidity range		5 - 90%RH (with no condensation)					



# Dimensions

## CV-3200S4/H4/W4, CV-4500S4/H4/W4

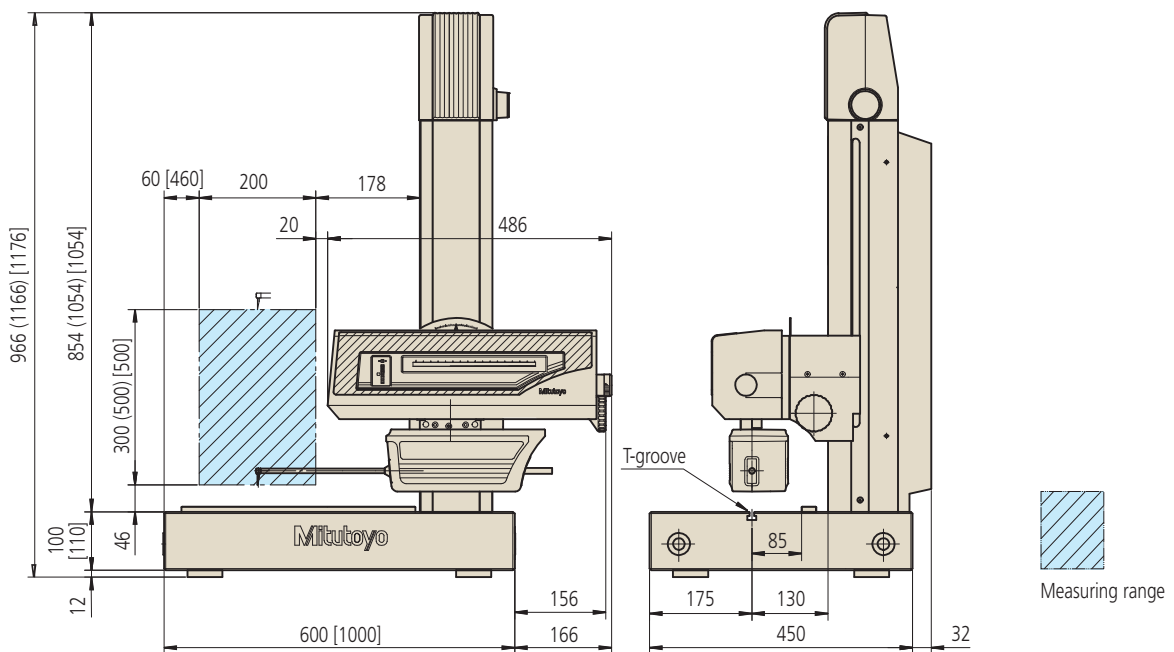
Unit: mm



( ): CV-3200H4, CV-4500H4  
[ ] : CV-3200W4, CV-4500W4

The CV-3200 series detector comes with weights for adjusting the measuring force.

## CV-3200S8/H8/W8, CV-4500S8/H8/W8



( ): CV-3200H8, CV-4500H8  
[ ] : CV-3200W8, CV-4500W8

The CV-3200 series detector comes with weights for adjusting the measuring force.



Export permission by the Japanese government may be required for exporting our products according to the Foreign Exchange and Foreign Trade Law. Please consult our sales office near you before you export our products or you offer technical information to a nonresident.

Coordinate Measuring Machines

Vision Measuring Systems

Form Measurement

Optical Measuring

Sensor Systems

Test Equipment and  
Seismometers

Digital Scale and DRO Systems

Small Tool Instruments and  
Data Management

Note: All information regarding our products, and in particular the illustrations, drawings, dimensional and performance data contained in this pamphlet, as well as other technical data are to be regarded as approximate average values. We therefore reserve the right to make changes to the corresponding designs, dimensions and weights. The stated standards, similar technical regulations, descriptions and illustrations of the products were valid at the time of printing. Only quotations submitted by ourselves may be regarded as definitive.

Our products are classified as regulated items under Japanese Foreign Exchange and Foreign Trade Law. Please consult us in advance if you wish to export our products to any other country. If the purchased product is exported, even though it is not a regulated item (Catch-All controls item), the customer service available for that product may be affected. If you have any questions, please consult your local Mitutoyo sales office.

### Mitutoyo Corporation

20-1, Sakado 1-Chome,  
Takatsu-ku, Kawasaki-shi,  
Kanagawa 213-8533, Japan

T +81 (0) 44 813-8230

F +81 (0) 44 813-8231

<http://www.mitutoyo.co.jp>

# Mitutoyo