

Mitutoyo



Mitutoyo Corporation
80th Anniversary
Since 1934

MICROCORD LEGEX Series

Ultra-high Accuracy CNC Coordinate Measuring Machine

COORDINATE
MEASURING MACHINES



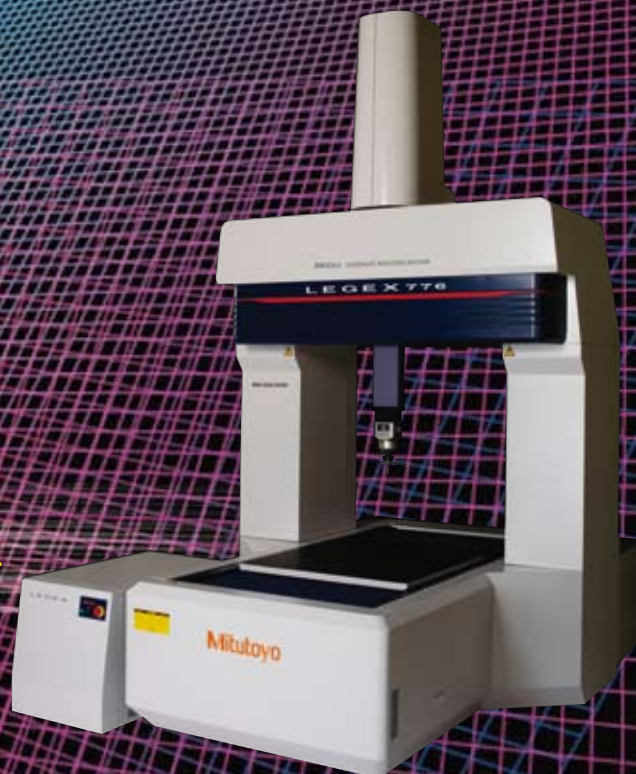
Catalog No.E16012(2)

The culmination of 80 years of Mitutoyo technology.
Recognized as the world's ultimate high-accuracy
measurement technology.





LEGEX 574



LEGEX 776



LEGEX 9106

World's leading measurement accuracy of
 $E_{0,MPE}=0.28+L/1000$ is achieved.*

* World's leading measurement accuracy specification as established by Mitutoyo in October 2014.

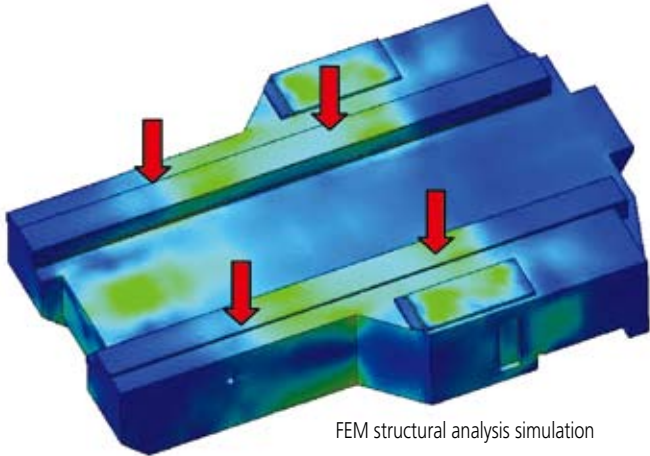
Evolving technology

Thorough analysis and elimination of error factors Part 1

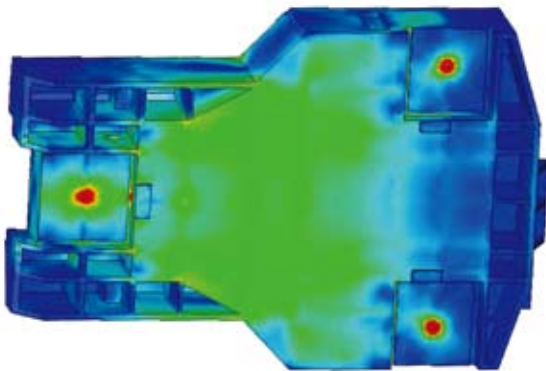
BASE DESIGN

High rigidity

The base of the LEGEX is made from special spheroidal graphite ductile cast iron to a sealed-structure design that provides high rigidity and vibration attenuating characteristics. Mitutoyo engineers used FEM analysis during the design phase to optimize the final configuration and ensure outstanding geometric accuracy by minimizing deformations caused by normal machine operation.



FEM structural analysis simulation



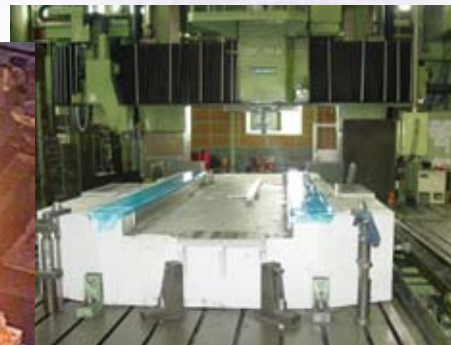
EVOLUTIONAL
TECHNOLOGIES

Spheroidal graphite ductile cast iron

Cast iron is an alloy of iron, carbon, silicon, manganese, phosphorus, sulfur, and traces of other elements, and exhibits characteristic properties due to the carbon being distributed throughout the metal in the form of graphite.

Ductile cast iron is created by spheroidizing the graphite by adding magnesium alloy to the melt. Compared with normal cast iron, it has great tensile strength, is relatively tough, and has excellent machinability and wear resistance. Ductile cast iron is thus used for components such as automotive parts.

LEGEX employs FCD600 ductile cast iron but made in such a way as to eliminate blow holes and pin holes (defects) of 0.1mm or larger.



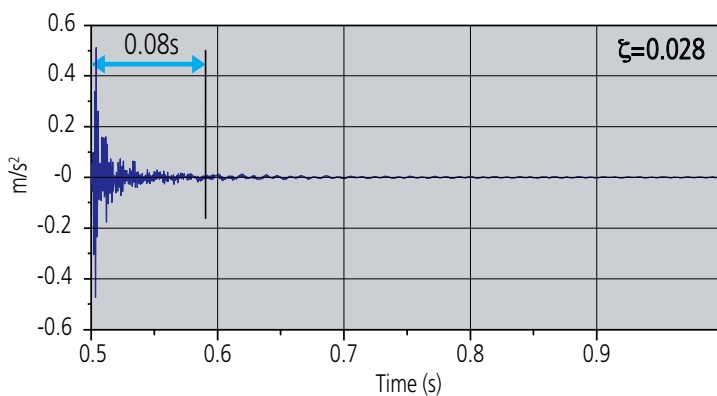
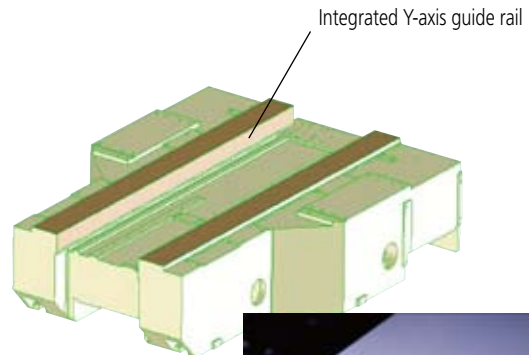
Integrated Y-axis guide rail

To further increase rigidity and thermal stability, the Y-axis guide rail is integrated with the main unit base.

Ceramic plasma spraying for each axis sliding section

Ceramic plasma spraying is applied to sliding sections for the Y-axis guide rail, X-axis beam, and Z-axis spindle, creating surfaces suitable for highly accurate air-bearing operation.

It also produces excellent corrosion resistance.



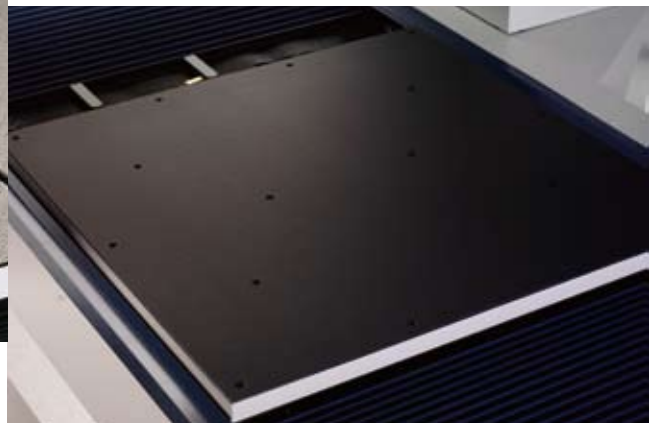
Vibration attenuation

The LEGEX structure quickly attenuates traverse-induced vibrations and so reduces any adverse effect on measurements. This characteristic also allows ultra-high scanning accuracy to be realized.

WORKTABLES



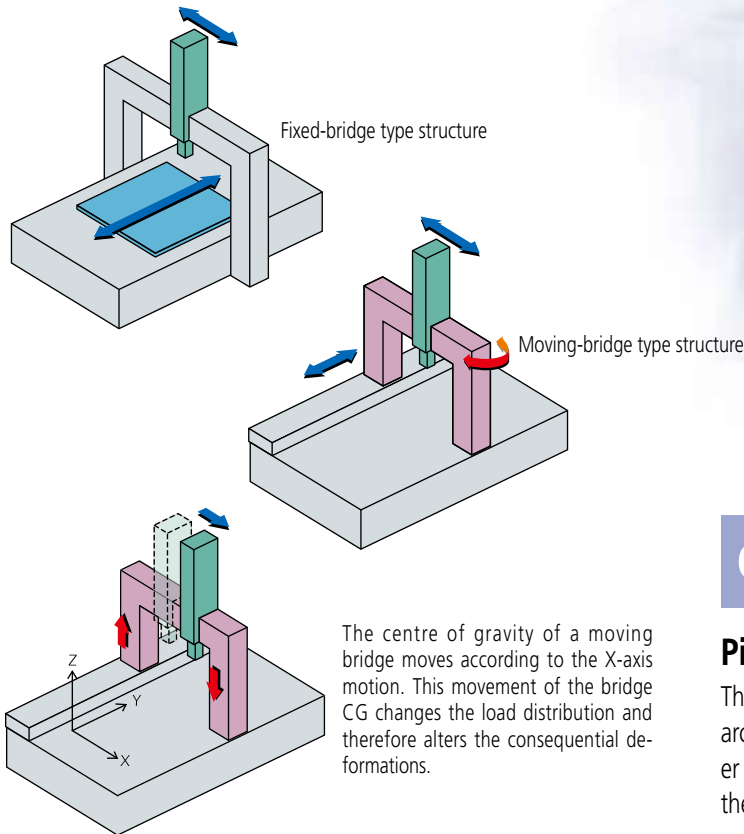
Standard worktable



Ceramic-coated worktable

Evolving technology

Thorough analysis and elimination of error factors Part 2



CONSTRUCTION

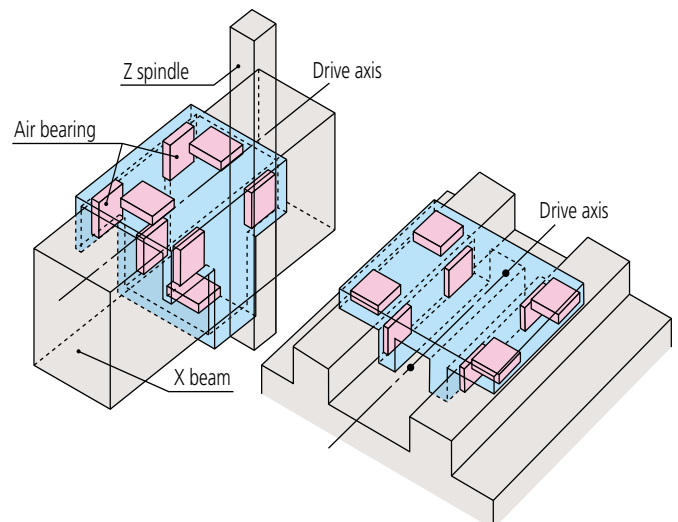
Pitch and yaw errors practically eliminated

The LEGEX uses a fixed-bridge type structure. This is the ideal CMM architecture and virtually eliminates pitch and yaw errors. Most other CMMs use a moving-bridge design with a single drive unit under the column, which tends to cause yawing and pitching during slide movements.

DYNAMIC ACCURACY

X- and Y-axis independence and a 'center of gravity' type drive system

The fixed-bridge design of the LEGEX allows the axes to operate totally independently. Movement of the X-axis slide does not change the loading on the Y-axis slide, and so does not cause deformation. Also, the 'center of gravity' type drive system places the drive units near the center of gravity of each slide. This feature allows very high speed, highly accurate measurements by reducing inertia-induced deflections during acceleration and deceleration.



VIBRATION CONTROL

Isolating floor vibration

The LEGEX is hardened against floor induced vibration by use of 'air-damped spring isolators' with an auto-leveling function. This virtually eliminates factory floor vibrations from the entire machine structure.



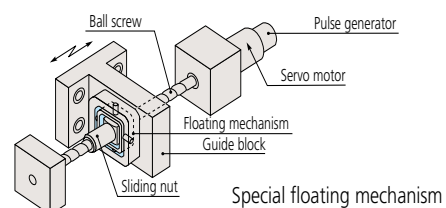
Installation positions

Floating mechanism reduces internal vibration

To reduce the effects of internally generated vibration, the LEGEX uses a special floating mechanism to couple each ballscrew to its guide block. This isolates the slide from the servo motor as it turns the ballscrew and thus prevents transmission of motor vibrations, especially during acceleration and deceleration.



Air-damped spring isolators



Special floating mechanism

Evolving technology

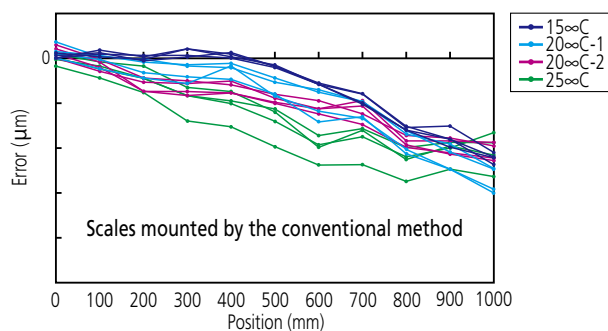
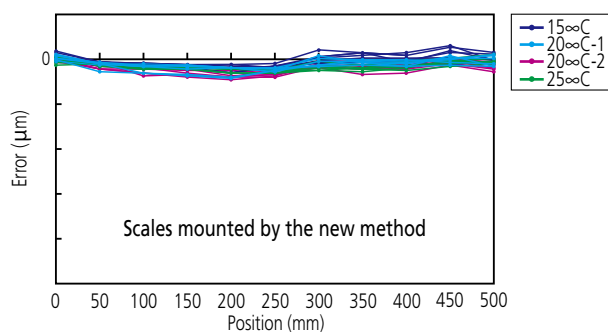
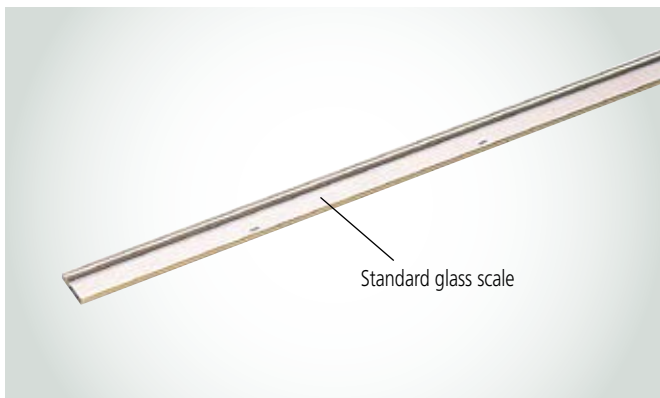
Thorough analysis and elimination of error factors Part 3

LENGTH STANDARD

Linear glass scales with virtually zero thermal expansion coefficient

The LEGEX is equipped with crystallized-glass scales with a resolution of $0.01\mu\text{m}$ and an ultra-low linear expansion coefficient of $0.01 \times 10^{-6}/\text{K}$. This virtually zero thermal expansion coefficient means the LEGEX can maintain its extreme accuracy in spite of thermal changes.

The scales are also mounted in a unique new way that reduces the hysteresis error to 1/5 that of previous models. The graphs below show the reduction in hysteresis error that results from this new mounting method.



Hysteresis comparison between the conventional and the new scale mounting methods

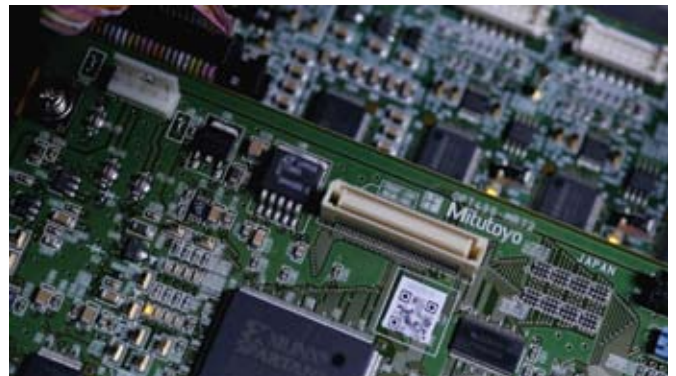
TEMPERATURE COMPENSATION

Effective over the 18°C to 22°C (64.4°F to 71.6°F) temperature range

While conventional very high accuracy CMMs require fairly strict temperature controlled environments, the LEGEX has been designed to improve the thermal stability of each component to minimize deformation. In addition, temperature sensors on each axis and for the workpiece itself detect temperature changes in real time and are used to compensate back to size at 20°C.

STATE-OF-THE-ART CONTROL

Our proprietary control unit has been upgraded with sophisticated control technology that uses a new algorithm. A newly developed high-resolution linear encoder is also used to achieve higher accuracy.





ZERO CERA BLOCK (LOW EXPANSION CERAMIC) GAUGE BLOCK

(An optional accuracy checking accessory)

Mitutoyo offers a special check standard that matches the characteristics of the LEGEX scales. This optional accessory uses ultra-low-expansion ceramic gauge blocks with a thermal expansion coefficient in the temperature range $20 \pm 1^\circ\text{C}$ less than 1/500 that of steel ($0 \pm 0.02 \times 10^{-6}/\text{K}(20^\circ\text{C})$). Using this ZERO CERA BLOCK standard provides a customer with the means to check the measuring accuracy of their LEGEX at any time, and so gain insight into how often their machine should be calibrated and adjusted by Mitutoyo. All gauge blocks in the standard are measured by interferometer to 0.00001mm resolution in Mitutoyo's Accredited Calibration Laboratory (JCSS No. 0030).

TEMPERATURE STABILIZED

(An optional accuracy enhancing accessory)

Generally speaking, temperature compensation and thermally insensitive materials can widen the usable range of ambient temperature and gradients. To eliminate a common source of temperature variation, the LEGEX is also available with a special air-server. In addition to the standard air cleaning and drying functions, this air server can stabilize the temperature of air drawn from the factory air supply to $20^\circ\text{C} \pm 0.1^\circ\text{C}$. In combination with the machine-enclosure design and thermally insensitive glass scales, temperature-stabilized air supplied to the air bearings can produce the exceptional thermal isolation needed for low measuring uncertainties. This air supply is also used for the MPP-300 probe to provide stabilized scanning.



Program

MiCAT

Mitutoyo Intelligent Computer Aided Technology

the standard in world
metrology software

cmm

Mitutoyo

Controlled

Open

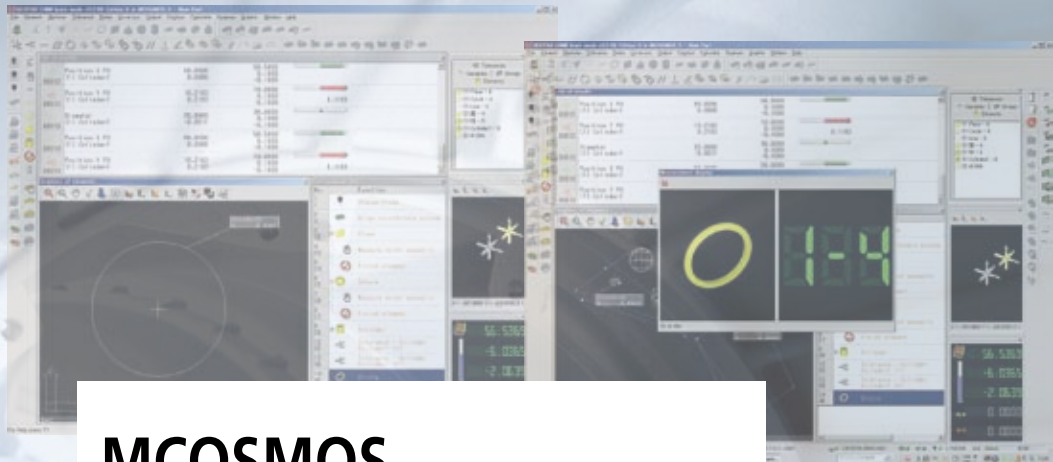
System

for

Modular

Operation

Support



MCOSMOS

– Mitutoyo Controlled Open System for
Modular Operation Support –

A wide variety of software modules for each manufacturing step, from design to production and to inspection, are available. In addition to a quality assurance module, they also include modules that support various types of CAD data processing, in-line measurement, data feedback, and process management.



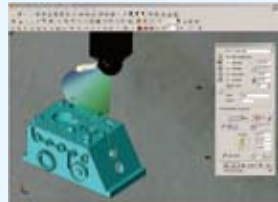

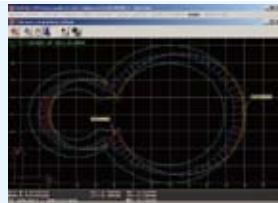


System performance from every viewpoint

Performance features of standard software modules

MCOSMOS has three module configurations, from the basic MCOSMOS 1 to the advanced MCOSMOS 3. This enables a choice of appropriate functionality for your current measurement applications now with the ability to expand, if needed, in the future.

Module configurations

| Module configurations | | MCOSMOS 1 | MCOSMOS 2 | MCOSMOS 3 | |
|--|---|-----------|-----------|-----------|--|
| | | Manual | | | |
| | | CNC | | | |
| PART MANAGER The control center from which the software package is initialized, and individual part programs are managed. |  | | | | |
| | | | | | |
| | | | | | |
| | | | | | |
| | | | | | |
| GEOPAK For (online/offline) part program creation, using the measurement of geometric elements. Extensive tolerance comparisons and output functions are included. |  | | | | |
| | | | | | |
| | | | | | |
| | | | | | |
| | | | | | |
| CAT1000P For (online/offline) part program creation, using the measurement of geometric elements directly from the CAD model, with automatic collision avoidance. |  | | | | |
| | | | | | |
| | | | | | |
| | | | | | |
| | | | | | |
| CAT1000S CAD model-based generation of surface measurement points, and comparison of actual/nominal data, with graphical output. |  | | | | |
| | | | | | |
| | | | | | |
| | | | | | |
| | | | | | |
| SCANPAK For the scanning and evaluation of workpiece contours, and 3D digitizing of surfaces. |  | | | | |
| | | | | | |
| | | | | | |
| | | | | | |
| | | | | | |

Other optional software modules

A wide variety of optional software packages that meet customer needs is available, including MAFIS Express for evaluating the shape of an airfoil, GEARPAK for evaluating gear measurements, NC-Auto Measure for generating CAD models from NC data, RepeatPak2700 for executing older data-processing programs, and the MeasurLink statistical processing program.

Probes and accessories



MPP-310Q (Ultra High-Accuracy Scanning)

The MPP-310Q is a multi-functional probe designed for CNC coordinate measuring machines. It can not only perform a continuous path contact-type scanning measurement [a measurement method that implements a collection of a large amount of coordinate data while traveling along a continuous path in contact with the workpiece] at $V2 \leq 0.3\mu\text{m}^*$, but also high-accuracy point measurement of $\leq 0.1\mu\text{m}$, and data collection from a centering point measurement.

* V2 (VDI2617) filtering is used with a standard stylus: 20°C, reference displacement: 0.25mm, measurement speed: 3mm/sec, using a $\phi 45$ ring gage

Omni-directional scanning

The MPP-310Q has internal high-accuracy scales with a resolution of $0.01\mu\text{m}$ in each direction (X, Y, and Z axes), which makes it possible to read the stylus displacement in any direction.

The air bearing employed in the sliding section of each axis helps provide this probe with minimum directionality.

Low measuring force

MPP-310Q can reduce its measuring force to a minimum of 0.03N so that it can even measure elastic workpieces such as resins, etc., without damaging them at all.

Fast scanning

MPP-310Q can perform fast scanning at 120mm/s. For example, it completes a measurement in just a few seconds even if it is required to measure an inside diameter of 100 mm using 1000 measurement points. In addition, measurement can be pursued effectively while changing the scanning speed, depending on the measurement accuracy required.

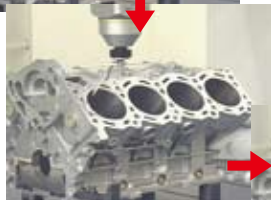
Specifications

| | |
|-------------------|-------------------|
| Measurement range | $\pm 1\text{mm}$ |
| Resolution | $0.01\mu\text{m}$ |
| Spring rate | 0.2N/mm |

High speed scanning measurement



Point measurement



Probes



SP80 Scanning Probe
120m/s scanning speed and 500mm long stylus



QVP



SurfaceMeasure606T

MRT320 Rotary table

The LEGEX can be used with the MRT320 rotary table as the 4th axis. It is very efficient for gear, cylinder cam and impeller measurements.

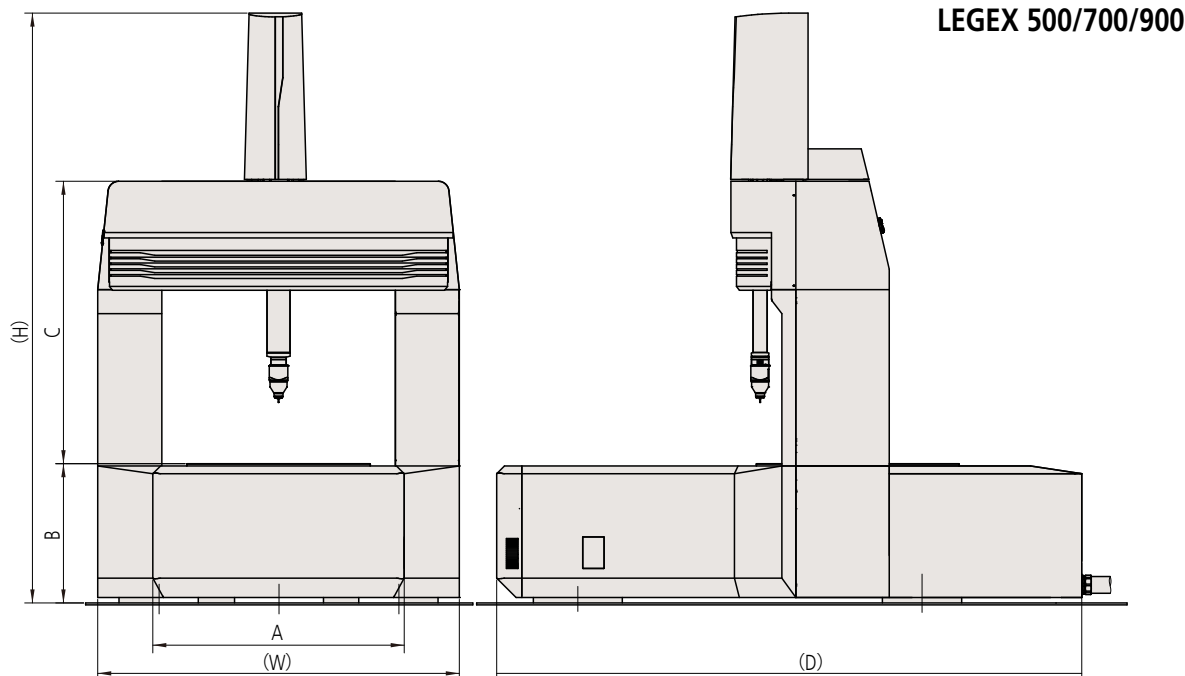


Specifications

| | | |
|--------------------|-------------------------------|-------------------------------|
| Resolution | | 1/10000 degree (0.36 seconds) |
| Accuracy | Indexing accuracy | 2" |
| | Deflection of rotation center | 1mm |
| | Deflection of table | 2mm |
| Maximum table load | Horizontal orientation | 100kg |
| | Vertical orientation | 50kg |
| Table | Diameter | ø320mm |
| | Height | 200mm |

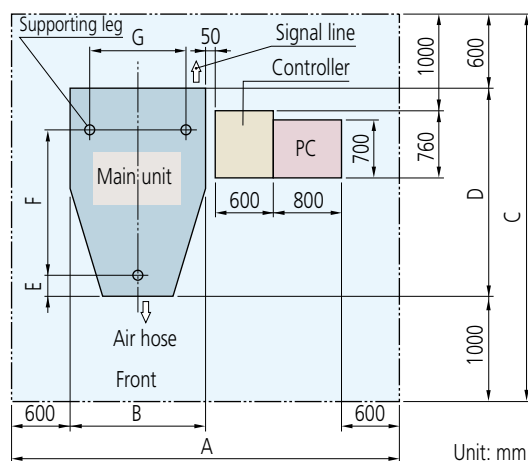
Technical Data

Dimensions



| Model | Height (H) | Width (W) | Depth (D) | A | B | C |
|------------|------------|-----------|-----------|--------|-------|--------|
| LEGEX 574 | 2630mm | 1470mm | 2400mm | 900mm | 600mm | 1311mm |
| LEGEX 774 | 2630mm | 1670mm | 2400mm | 1100mm | 600mm | 1311mm |
| LEGEX 776 | 2930mm | 1670mm | 2400mm | 1100mm | 600mm | 1461mm |
| LEGEX 9106 | 3050mm | 1870mm | 3030mm | 1300mm | 720mm | 1461mm |

Floor layout (reference)



| Model | A | B | C | D | E | F | G |
|------------|--------|--------|--------|--------|-------|--------|--------|
| LEGEX 574 | 4236mm | 1586mm | 4140mm | 2540mm | 368mm | 1390mm | 890mm |
| LEGEX 774 | 4506mm | 1856mm | 4196mm | 2596mm | 378mm | 1410mm | 1100mm |
| LEGEX 776 | 4506mm | 1856mm | 4196mm | 2596mm | 378mm | 1410mm | 1100mm |
| LEGEX 9106 | 4706mm | 2056mm | 4800mm | 3200mm | 420mm | 1795mm | 1325mm |

SPECIFICATIONS

| Model | | LEGEX 574 | LEGEX 774 | LEGEX 776 | LEGEX 9106 |
|-------------------------|--------------------------|---|-----------|-----------|------------|
| Measuring range | X axis | 500mm | 700mm | | 900mm |
| | Y axis | 700mm | | | 1000mm |
| | Z axis | 450mm | | 600mm | |
| Measurement method | | Ultrahigh-precision linear encoder | | | |
| Maximum measuring speed | | 200mm/s | | | |
| Maximum acceleration | | 980mm/s ² | | | |
| Resolution | | 0.00001mm | | | |
| Guide method | | Air bearing | | | |
| Measuring table | Material | Cast iron* | | | |
| | Size | 550×750mm | 750×750mm | | 950×1050mm |
| | Tapped insert | M8×1.25mm (for workpiece clamping) | | | |
| Table loading | Maximum workpiece height | 695mm | | 860mm | |
| | Maximum table loading | 250kg | 500kg | | 800kg |
| Mass (main unit) | | 3500kg | 5000kg | 5100kg | 6500kg |
| Air supply | Pressure | 0.5MPa | | | |
| | Consumption | 120L/min under normal conditions (air source: 160L/min or more) | | | |

*Ceramic coated type is also available as an option.

Main unit accuracy

Unit: μm

| Probe | Length measurement error ISO 10360-2:2009 (JIS B 7440-2:2013) |
|---------|---|
| MPP310Q | $E_{0,MPE} = (0.28 + L/1000)\mu\text{m}$ (Temperature environment 1) $E_{0,MPE} = (0.3 + L/1000)\mu\text{m}$ (Temperature environment 2) |

* L = measured length (mm)

* Table at right defines temperature environments 1 and 2

Installation temperature environment

| | Temperature environment 1 | Temperature environment 2 |
|-------------------|---------------------------|---------------------------|
| Temperature range | 19 - 21°C | 18 - 22°C |
| Rate of change | 0.5°C | |
| Gradient | 1.0°C | |

Introduction to LEGEX12128



Main Specifications

| Model | | LEGEX12128 |
|---|--------------------------|--------------------------------|
| Measuring range | X axis | 1200mm |
| | Y axis | 1200mm |
| | Z axis | 800mm |
| Resolution | | 0.00001mm |
| Guide method | | Air bearing |
| Length measurement error (Probe MPP310Q) $E_{0,MPE}$ | | $(0.6 + 1.5L/1000)\mu\text{m}$ |
| Table capacity | Maximum workpiece height | 1056 mm |
| | Maximum table loading | 1000 kg |
| Mass (main unit) | | 10500kg |

* L = measured length (mm)

* This is a custom-order product.



Note: This machine incorporates a main unit Startup system (relocation detection system), which disables operation when an unexpected vibration is applied or the machine is relocated. Be sure to contact your nearest Mitutoyo Sales Office prior to relocating this machine after initial installation.

Coordinate Measuring Machines



Vision Measuring Systems



Form Measurement



Optical Measuring



Sensor Systems

Test Equipment
and Seismometers

Digital Scale and DRO Systems

Small Tool Instruments
and Date Management

Whatever your challenges are, Mitutoyo supports you from start to finish.

Mitutoyo is not only a manufacturer of top quality measuring products but one that also offers qualified support for the lifetime of the equipment, backed up by comprehensive services that ensure your staff can make the very best use of the investment.

Apart from the basics of calibration and repair, Mitutoyo offers product and metrology training, as well as IT support for the sophisticated software used in modern measuring technology. We can also design, build, test and deliver bespoke measuring solutions and even, if deemed cost-effective, take your critical measurement challenges in-house on a sub-contract basis.



**Find additional product literature
and our product catalogue**

<http://www.mitutoyo.co.jp/global.html>

Note: Product illustrations are without obligation. Product descriptions, in particular any and all technical specifications, are only binding when explicitly agreed upon.

MITUTOYO and MICAT are either registered trademarks or trademarks of Mitutoyo Corp. in Japan and/or other countries/regions. Other product, company and brand names mentioned herein are for identification purposes only and may be the trademarks of their respective holders.

Mitutoyo

Mitutoyo Corporation

20-1, Sakado 1-Chome,
Takatsu-ku, Kawasaki-shi,
Kanagawa 213-8533, Japan

T +81 (0) 44 813-8230

F +81 (0) 44 813-8231

<http://www.mitutoyo.co.jp>