

STYLI AND ACCESSORIES

MAXIMUM PRECISION, PIONEERING INNOVATION
AND CONVINCING ECONOMICS



Probe components from Mitutoyo: Add the touch of perfection to your quality assurance.

STYLLI FOR CMM

Industrial quality assurance requires increasing universality, flexibility and the ideal shape for absolute precision. Here Mitutoyo styli show exactly what they are capable of: maximum precision, pioneering innovation and convincing economics.

It is not only the technical capabilities of Mitutoyo styli that stand out from the crowd. Equally impressive is the integrated nature of the entire concept, right through to the seamless service environment.

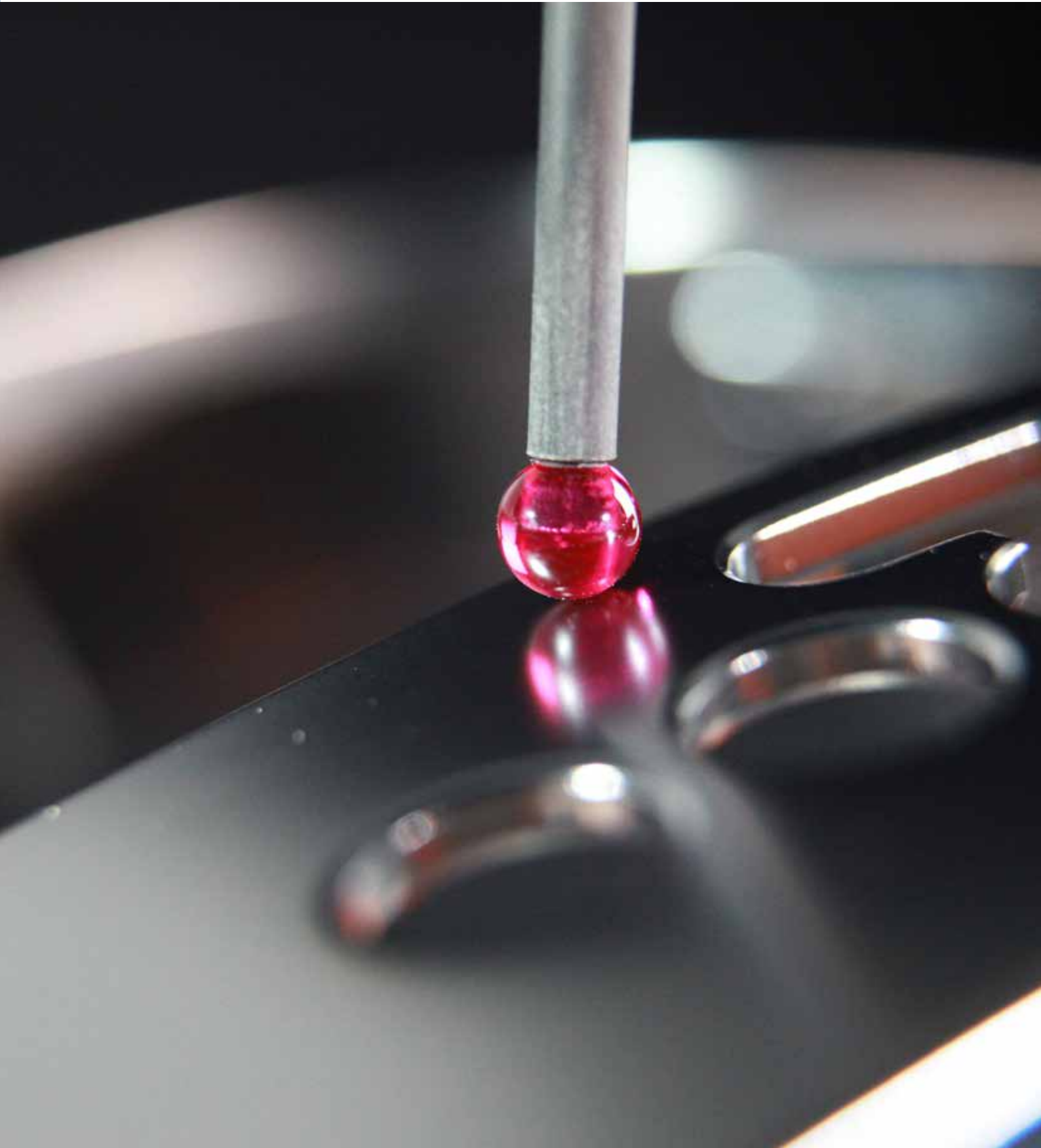
This concept forms the customer-oriented basis for a multi-faceted range of services that will open up a new dimension of quality assurance to every user: world-class measuring technology from Mitutoyo.

Steel, aluminium or ceramics? Ruby, zirconium oxide or silicon nitride?

The Mitutoyo product line includes over 600 probe components plus highly specialised equipment - listed in this current product information - to provide the best possible solution to your specific measurement needs with a sophisticated sense of touch. For measurably better results.

Mitutoyo means that you can count on the experience, competence and performance of a one of the world's leading measurement technology specialists, as well as. And a customer- focused service without equal comparison.

Mitutoyo: performance made perfect.



Contents

Page	Item	Description	Page	Item	Description
5	Materials for bases and stylus stems	Material data and characteristics	38 - 40	Stylus tungsten carbide	Styli M5
6	Technical data		40 - 41	Stylus for multi-way stylus	
8-11	Stylus Kits M2 / M3	Styli kits	41	4-way cube	
12	Stylus Kits M3 / M4		41	Multi-way stylus	
14	Stylus tungsten carbide	Styli M2	41	Disk stylus	
15	Stylus tungsten carbide/ceramic		42	Tip stylus	
16	Stylus steel		42	Stylus holder	
17	Cylinder stylus		42	5-way stylus holder	
18	Stylus for holder		43 - 44	Extension	
18	Stylus holder		44	Cube	
19	Adaptor		44	Screw for cube	
19	4-way stylus holder		45	Joint	
19 - 20	5-way stylus holder		45	Swivel piece	
21	Stylus for multi-way stylus		45	Multi-way stylus holder	
21	Tip stylus		46 - 47	Adaptor plate	
22	Disk stylus		48	Adaptor	
23	Knuckle/swivel joint		48	Pin spanner	
24	Extension		48	Master ball	
26 - 27	Stylus tungsten carbide		48	Base plate for calibration sphere	
27	Stylus ceramic	49	Thread insert		
27 - 28	Stylus carbon fiber	49	Pin spanner		
28	Stylus steel	50 - 54	Article Index		
29	Cylinder stylus	55	Mitutoyo - added value for you!		
29 - 30	5-way stylus holder	Styli M3			
30	Adaptor				
30	Knuckle joint				
30 - 31	Disk stylus				
31	Multi-way stylus				
31	Stylus for multi-way stylus				
32	Extension				
34	Stylus steel	Styli M4			
34	Stylus ceramic				
35	Extension				
35	5-way stylus holder				
35 - 36	Adaptor				

Styli made by Mitutoyo: Tip top quality.

Which stylus is best suited, and under which conditions, for use with your measuring equipment, for your specific measuring task? Mitutoyo offers you the answers. We have 30 years of experience in developing and manufacturing styli, based on cutting-edge materials development, our experts know which material and which combination will enable you to achieve your goals reliably and accurately. Whatever you choose, the result is the same: the best. Our expertise and use of the highest-quality materials guarantee products of unparalleled excellence:

The materials we use for contact points

Ruby

As the hardest of all probe element materials, ruby is the perfect all-rounder when it comes to manufacturing spherical contact points that must be highly resistant to wear. Contact points made of ruby have been used as tried and tested equipment for most standard applications for decades. The low specific density of ruby enables the mass of the stylus tip to be kept as small as possible – this effectively allows the elimination of false triggers caused by mass inertia when the CMM moves or vibrates.



Zirconium oxide

Because of the specific surface properties of contact points made of zirconium oxide - a ceramic compound – they are the acknowledged as the best choice for aggressive scanning of abrasive surfaces, such as workpieces made of cast iron. Zirconium oxide has virtually the same hardness and wear-resistant properties as ruby.



Silicon nitride

Silicon nitride is extremely hard and superbly wear-resistant, with the least surface roughness of all ball materials. Specific advantage: silicon nitride is not attracted by aluminum and therefore coats the surfaces of workpieces made of aluminum alloy to a much lesser extent than other ball materials.



The materials we use for bases and styli stems

Steel

The primary material of choice for high-strength precision styli that enable very accurate measuring tasks. Its superb material strength makes steel an excellent choice of material for manufacturing styli or reference probe elements.



Carbon fiber tube

Thermal expansion coefficient range is virtually undetectable at temperatures of between 15 and 40 degrees centigrade. Mitutoyo uses carbon fiber tube for styli with outstanding quality, sophisticated styli configurations and probe extensions.



Aluminum alloy

Lightweight and stable, and therefore frequently used for probe extensions. Styli stems or extensions made of aluminum alloy perform best in measuring labs with stable temperatures and accordingly, the lowest possible temperature gradients.



Carbon fiber

The highest-quality material with an expansion coefficient of virtually zero at ambient temperatures of up to 45 degrees celsius. Carbon fiber is also very lightweight and extremely stiff, making it particularly suitable for the manufacture of long styli.



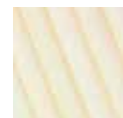
Tungsten carbide

Bend-resistant styli stems made of tungsten carbide are ideal for virtually all standard applications in the measuring lab with its stable ambient temperature. A durable material that has proved its worth.



Ceramic

Very lightweight and extremely stiff. The ideal material, especially for long stems. Their low tendency to expand in higher temperatures makes ceramic styli also suitable for use in production surroundings.



Titanium

Titanium is remarkably stiff yet has a relatively low density. Probe components made of titanium offer the outstanding characteristics of being extremely rigid and stable, yet surprisingly lightweight. Mitutoyo uses the material primarily for bases, connecting pieces and extensions for measuring styli.



TECHNICAL SUPPORT - CHECKLIST

- The shortest, most stable styli possible must be used. When using longer styli parts, always check that they are sufficiently stable.
- To be sure that the mount is secure, make sure that your styli are free from defects, especially on the seating area and thread.
- Make sure the probe component is completely securely attached to minimise variations.
- Remember to replace older styli regularly.
- Take account of the ambient temperature and conditions when using thermally stable components.
- The manufacturer's instructions for setting up stylus configurations will specify the permitted masses; always refer to these.
- Use as few individual components as possible and keep superfluous thread connections to a minimum.
- It is advisable to use silicon nitride balls when scanning aluminium.
- The balls used should be as large as possible. Large ball styli perform a mechanical filter function on the workpiece surface. Due to their size, they have hardly any impact on the surface's fine structure, thus eliminating flyers or random measurement variations.
- As far as possible you should always place the styli at right angles to the planes you are measuring. You can use angled cubes and knuckles to align styli correctly on angled measuring planes. Use the same methods to measure angled bores.
- Make sure that you employ the right dynamics and measuring strength for the stylus components you are working with. Decrease these as needed when working with small ball, slim-stemmed styli.

Technical data

Material characteristics

Diameter and Form Deviations

Grade	Ball ϕ to	VDws max.	Ra max.	tDws
G3	12.7 mm	0.08 μm	0.010 μm	0.08 μm
G5	12.7 mm	0.13 μm	0.014 μm	0.13 μm
G10	25.4 mm	0.25 μm	0.020 μm	0.25 μm
G16	25.4 mm	0.40 μm	0.025 μm	0.40 μm
G20	38.1 mm	0.50 μm	0.032 μm	0.50 μm

VDws Difference between the largest and smallest of the single diameters of ball

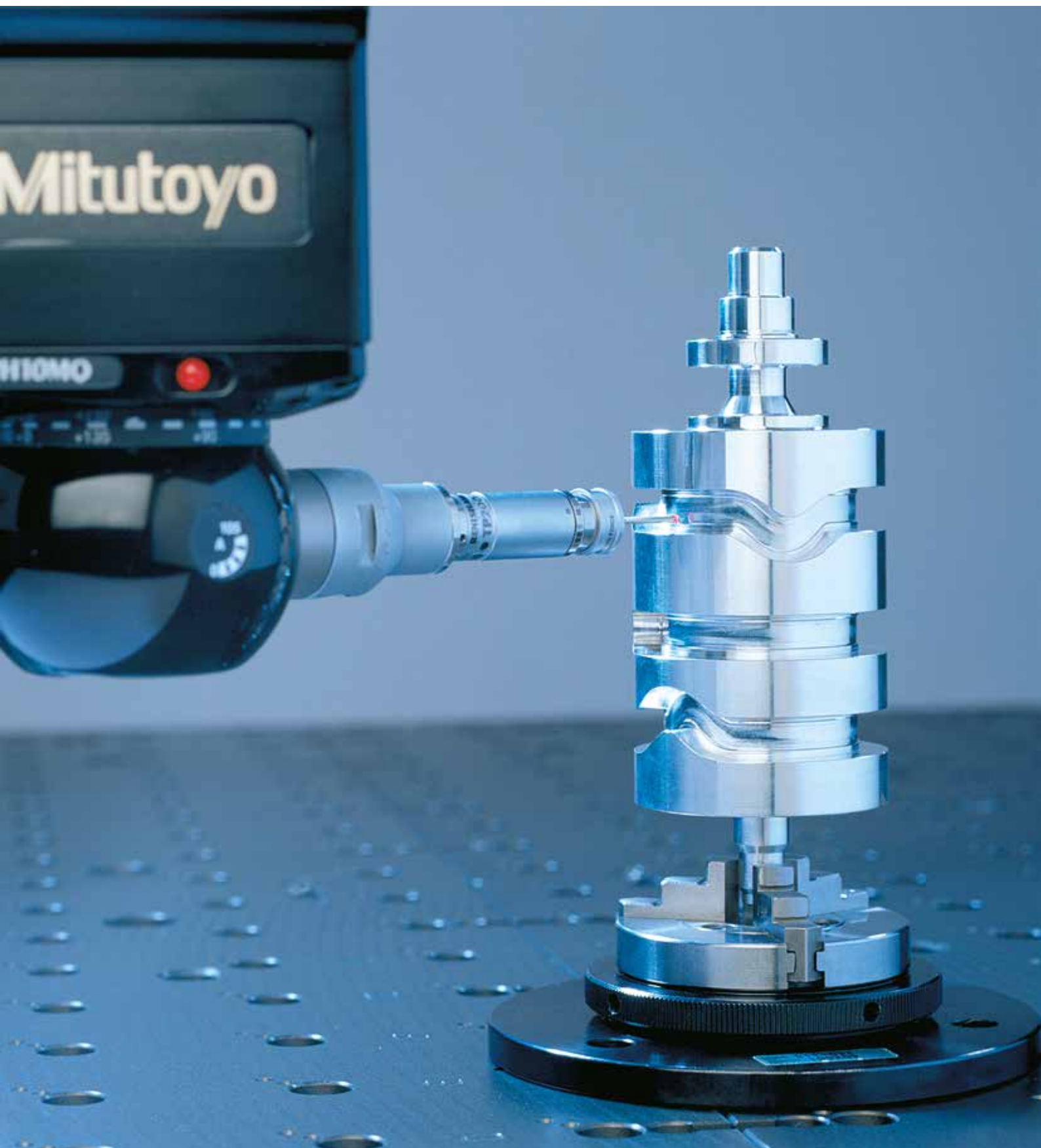
Ra max. Surface roughness

tDws Deviation from the perfect spherical form

Characteristics of ball materials

characteristics	unit	sapphire	ruby	Aluminum oxide	Silicon nitride	Zirconium oxide
					gehipt (HP-Si ₃ N ₄)	ATZ
chemical formula		Al ₂ O ₃	Al ₂ O ₃	Al ₂ O ₃	SiN ₄	ZrO ₂
consistence	weight %	99.99	99	99,8	>90	76/20/4
density	g/cm ³	3.99	3.99	3,86	3,2	5,5
hardness	HV	2300	2300	1900	1600	1400
pressure resistance	MPa	2100	2100	2500	3000	>2000
equivalent fibre	MPa	400-700	400-700	350	850	2400
fracture toughness K _{1c}	MN/m ^{3/2}	1	1	3,5	7	10
elasticity moduls	GPa	430	430	350	320	220
heat expansion	10 ⁻⁶ /K	5.4	5.4	7.8	3.2	9
heat conductance	W/mK	36	36	29	40	6
specific heat	J/kgK	755	755	900	750	600
maximum application temperature of the air	°C	1800	1800	1900	1100	1000
chemical resistance	(acids) (leaching)	optimally good	optimally good	optimally good	optimally good	good good

STYLI KITS



Kits M2 / M3

**Styli Kit M2
Starter**



Part No.	Contents	Description	ø S mm	L mm	Price €
K651376					140,00
		wooden box			
	1x Part No. K651012	Stylus steel-ruby M2	1	10	
	1x Part No. K651019	Stylus steel-ruby M2	2	20	
	1x Part No. K651021	Stylus steel-ruby M2	3	20	
	1x Part No. K651022	Stylus steel-ruby M2	4	20	
	1x Part No. K651038	Extension steel M2		10	
	1x Part No. K651039	Extension steel M2		20	
	2x Part No. K651223	Pin spanner ø 1,2 mm		23	

**Styli Kit M2
Addition**



Part No.	Contents	Description	ø S mm	L mm	Price €
K651382					356,00
		wooden box			
	1x Part No. K651058	5-way stylus holder M2		7.5	
	1x Part No. K651040	Extension steel M2		30	
	1x Part No. K651039	Extension steel M2		20	
	4x Part No. K651038	Extension steel M2		10	
	1x Part No. K651022	Stylus steel-ruby M2	4	20	
	1x Part No. K651021	Stylus steel-ruby M2	3	20	
	5x Part No. K651019	Stylus steel-ruby M2	2	20	
	1x Part No. K651012	Stylus steel-ruby M2	1	10	
	2x Part No. K651223	Pin spanner ø 1,2 mm		23	

**Styli Kit M2
Basic 1**



Part No.	Contents	Description	ø S mm	L mm	Price €
K651377					649,00
		wooden box			
	1x Part No. K651012	Stylus steel-ruby M2	1	10	
	1x Part No. K651014	Stylus steel-ruby M2	2	10	
	1x Part No. K651019	Stylus steel-ruby M2	2	20	
	1x Part No. K651016	Stylus steel-ruby M2	3	10	
	1x Part No. K651021	Stylus steel-ruby M2	3	20	
	1x Part No. K651022	Stylus steel-ruby M2	4	20	
	1x Part No. K651031	Cylinder stylus steel M2	3	13	
	1x Part No. K651062	Adaptor M2		7	
	1x Part No. K651054	5-way stylus M2	2	30	
	1x Part No. K651083	Disk stylus steel M2	18	7.5	
	1x Part No. K651085	Disk stylus steel - ruby M2	6	10	
	1x Part No. K651038	Extension steel M2		10	
	1x Part No. K651039	Extension steel M2		20	
	2x Part No. K651223	Pin spanner ø 1,2 mm		23	

STYLI KITS

Styli Kit M2 Basic 2



Part No.	Contents	Description	ø S mm	L mm	Price €
K651354					737,00
		wooden box			
	1x Part No. K651235	Stylus tungsten carbide-ruby M2	0,5	20	
	1x Part No. K651249	Stylus tungsten carbide-ruby M2	1	20	
	1x Part No. K651019	stylus steel-ruby M2	2	20	
	1x Part No. K651347	Stylus carbon fiber-ruby M2	4	50	
	1x Part No. K651348	Stylus carbon fiber-ruby M2	5	50	
	1x Part No. K651349	Stylus carbon fiber-ruby M2	6	50	
	1x Part No. K651350	Stylus extension CRP M2		40	
	1x Part No. K651351	Stylus extension CRP M2		50	
	1x Part No. K651352	Stylus extension CFK M2		70	
	1x Art.:Nr.: K651353	Stylus extension CFK M2		90	
	1x Part No. K651058	5-way stylus holder M2		7,5	
	1x Part No. K651223	pin spanner ø 1,2 mm			

Styli Kit M2 Expansion



Part No.	Contents	Description	ø S mm	L mm	Price €
K651378					1348,00
		wooden box			
	1x Part No. K651236	Stylus tungsten carbide-ruby M2	0,7	10	
	1x Part No. K651248	Stylus tungsten carbide-ruby M2	1	20	
	2x Part No. K651257	Stylus tungsten carbide-ruby M2	1,5	30	
	1x Part No. K651233	Stylus tungsten carbide-ruby M2	0,3	10	
	1x Part No. K651276	Stylus tungsten carbide-ruby M2	0,5	10	
	1x Part No. K651012	Stylus steel-ruby M2	1	10	
	1x Part No. K651013	Stylus steel-ruby M2	1,5	10	
	1x Part No. K651014	Stylus steel-ruby M2	2	10	
	1x Part No. K651015	Stylus steel-ruby M2	2,5	10	
	2x Part No. K651020	Stylus steel-ruby M2	2,5	20	
	1x Part No. K651032	Cylinder stylus-ruby M2	2	20	
	1x Part No. K651052	4-way stylus-ruby M2	1	10	
	1x Part No. K651098	Tip stylus tungsten carbide M2		10	
	1x Part No. K651083	Disk stylus steel M2	18	7,5	
	1x Part No. K651084	Disk stylus steel M2	25	7,5	
	1x Part No. K651041	Extension steel M2		40	
	2x Part No. K651223	Pin spanner ø 1,2 mm		23	

Kits M2 / M3

Styli Kit M2 Professional



Part No.	Contents	Description	ø S mm	L mm	Price €
K651379					2776,00
		wooden box			
1x Part No. K651236		Stylus tungsten carbide-ruby M2	0.7	10	
1x Part No. K651248		Stylus tungsten carbide-ruby M2	1	20	
1x Part No. K651233		Stylus tungsten carbide-ruby M2	0.3	10	
2x Part No. K651276		Stylus tungsten carbide-ruby M2	0.5	10	
2x Part No. K651012		Stylus steel-ruby M2	1	10	
1x Part No. K651013		Stylus steel-ruby M2	1.5	10	
3x Part No. K651014		Stylus steel-ruby M2	2	10	
5x Part No. K651019		Stylus steel-ruby M2	2	20	
1x Part No. K651015		Stylus steel-ruby M2	2.5	10	
2x Part No. K651020		Stylus steel-ruby M2	2.5	20	
1x Part No. K651016		Stylus steel-ruby M2	3	10	
2x Part No. K651021		Stylus steel-ruby M2	3	20	
3x Part No. K651017		Stylus steel-ruby M2	4	10	
3x Part No. K651022		Stylus steel-ruby M2	4	20	
2x Part No. K651018		Stylus steel-ruby M2	5	10	
2x Part No. K651024		Stylus steel-ruby M2	6	10	
1x Part No. K651025		Stylus steel-ruby M2	8	11	
1x Part No. K651030		Cylinder stylus steel M2	1.5	11	
1x Part No. K651031		Cylinder stylus steel M2	3	13	
1x Part No. K651032		Cylinder stylus-ruby M2	2	20	
1x Part No. K651062		Adaptor M2		7	
1x Part No. K651052		4-way stylus-ruby M2	1	10	
1x Part No. K651053		5-way stylus-ruby M2	2	18	
1x Part No. K651054		5-way stylus-ruby M2	2	30	
1x Part No. K651097		Tip stylus steel M2		15	
1x Part No. K651098		Tip stylus tungsten carbide M2		10	
1x Part No. K651083		Disk stylus steel M2	18	7.5	
1x Part No. K651084		Disk stylus steel M2	25	7.5	
1x Part No. K651085		Disk stylus steel - ruby M2	6	10	
1x Part No. K651090		Hollow ball ceramic M2		11	
1x Part No. K651058		5-way stylus holder M2		7.5	
4x Part No. K651037		Extension steel M2		5	
2x Part No. K651038		Extension steel M2		10	
2x Part No. K651039		Extension steel M2		20	
2x Part No. K651040		Extension steel M2		30	
2x Part No. K651041		Extension steel M2		40	
2x Part No. K651223		Pin spanner ø 1,2 mm		23	

STYLI KITS

**Styli Kit M3
CRP 1**



Part No.	Contents	Description	ø S mm	L mm	Price €
K651318					345,00
		Wooden box			
	1x Part No. K651297	Stylus carbon fiber-ruby M3	3	21	
	1x Part No. K651298	Stylus carbon fiber-ruby M3	4	21	
	1x Part No. K651301	Stylus carbon fiber-SiNi M3	4	21	
	1x Part No. K651299	Stylus carbon fiber-ruby M3	4	31	
	1x Part No. K651300	Stylus carbon fiber-ruby M3	4	40	
	1x Part No. K651303	Stylus carbon fiber-ruby M3	5	50	
	1x Part No. K651223	pin spanner ø 1.2 mm			

**Styli Kit M3
CRP 2**



Part No.	Contents	Description	ø S mm	L mm	Price €
K651319					361,00
		Wooden box			
	1x Part No. K651302	Stylus carbon fiber-ruby M3	5	21	
	1x Part No. K651304	Stylus carbon fiber-ruby M3	5	21	
	1x Part No. K651303	Stylus carbon fiber-ruby M3	5	50	
	1x Part No. K651305	Stylus carbon fiber-ruby M3	6	50	
	1x Part No. K651306	Stylus carbon fiber-ruby M3	6	75	
	1x Part No. K651223	Pin spanner ø 1.2 mm			

**Styli Kit M3
CRP 3**



Part No.	Contents	Description	ø S mm	L mm	Price €
K651320					408,00
		Wooden box			
	1x Part No. K651302	Stylus carbon fiber-ruby M3	5	21	
	1x Part No. K651304	Stylus carbon fiber-ruby M3	5	21	
	1x Part No. K651303	Stylus carbon fiber-ruby M3	5	50	
	1x Part No. K651306	Stylus carbon fiber-ruby M3	6	75	
	1x Part No. K651309	Stylus carbon fiber-ruby M3	8	100	
	1x Part No. K651223	Pin spanner ø 1.2 mm			

**Styli Kit M3
Linear Height**



Part No.	Contents	Description	ø S mm	L mm	Price €
K650986					386,00
	1x Part No. K681867	s-receiver			
	1x Part No. K651223	Pin spanner ø 1.2 mm			
	1x Part No. K651157	extension steel M3		20	
	1x Part No. K651156	extension steel M3		10	
	1x Part No. K651172	disk stylus steel M3	12.7	33	
	1x Part No. K651151	Stylus steel-ruby M3	4	31	
	1x Part No. K651148	Stylus steel-ruby M3	3	21	
	1x Part No. K651147	Stylus steel-ruby M3	2	21	
	1x Part No. K651146	Stylus steel-ruby M3	1	21	

Styli Kits M3 / M4

Styli Kit M3 Starter



Part No.	Contents	Description	ø S mm	L mm	Price €
K651380					201,00
		Wooden box			
	1x Part No. K651146	Stylus steel-ruby M3	1	21	
	1x Part No. K651147	Stylus steel-ruby M3	2	21	
	1x Part No. K651148	Stylus steel-ruby M3	3	21	
	1x Part No. K651151	Stylus steel-ruby M3	4	31	
	1x Part No. K651152	Stylus steel-ruby M3	5	33.5	
	1x Part No. K651157	extension steel M3		20	
	1x Part No. K651159	extension steel M3		35	
	2x Part No. K651223	Pin spanner ø 1.2 mm		23	

Styli Kit M4



Part No.	Contents	Description	ø S mm	L mm	Price €
K651383					891,00
		Wooden box			
	1x Part No. K651184	Stylus ceramic-ruby M4	8	100	
	1x Part No. K651182	Stylus ceramic-ruby M4	8	50	
	1x Part No. K651216	Adaptor ceramic M4/M3	7	100	
	1x Part No. K651215	Adaptor ceramic M4/M3	7	75	
	1x Part No. K651214	Adaptor ceramic M4/M3	7	50	
	1x Part No. K651204	extension ceramic M4	7	50	
	1x Part No. K651203	extension ceramic M4	7	30	
	1x Part No. K651170	Adaptor M3/M2	4	5	
	1x Part No. K651208	Adaptor M4/M3	7	9	
	2x Part No. K650346	Pin spanner	1.7	49	
	2x Part No. K651223	Pin spanner	1.2	23	
	1x Part No. K651058	5-way stylus holder M2	7	7.5	
	1x Part No. K651169	5-way stylus holder M3	10	13	
	1x Part No. K651206	5-way stylus holder M4	15	18	
	1x Part No. K651186	Stylus steel-ruby M4	1	19.5	
	4x Part No. K651187	Stylus steel-ruby M4	2	19	
	1x Part No. K651188	Stylus steel-ruby M4	4	18	

Components for measuring heads WITH M2 THREAD

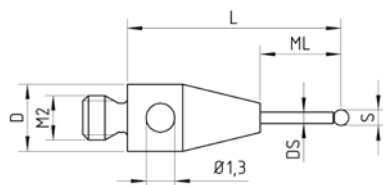
TP20
TP200
MH20i
TP2



Styli M2

Stylus tungsten carbide

base stainless steel
stem tungsten carbide
ball ruby

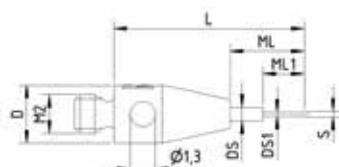


Part No.	S mm	L mm	ML mm	ML1 mm	D mm	DS mm	DS1 mm	Weight g	Price €
K651236	0.7	10	4		3	0.5		0.23	81,00
K651237	1	10	6		3	0.8		0.24	28,00
K651246	1	15	11		3	0.8		0.5	31,00
K651248	1	20	7		3	0.7		0.48	48,00
K651249	1	20	12.5		3	0.8		0.39	52,00
K651256	1	27.5	20.5		3	0.7		0.4	64,00
K651322	1	52	37		3	0.7		0.89	60,00
K651238	1.5	10	4		3	1		0.32	37,00
K651250	1,5	20	12.5		3	1		0.46	52,00
K651257	1.5	30	22.5		3	1		0.56	56,00
K651239	2	10	5		3	1		0.34	27,00
K651240	2	10	6		3	1		0.29	27,00
K651247	2	15	11		3	1		0.33	30,00
K651251	2	20	15		3	1		0.45	31,00
K651258	2	30	22.5		3	1.5		0.96	52,00
K651263	2	40	32.5		3	1.5		1.22	56,00
K651323	2	58	52		3	1.5		1.63	50,00
K651241	2.5	10	5		3	1.5		0.42	31,00
K651252	2.5	20	14.5		3	1.5		0.69	33,00
K651259	2.5	30	25		3	2		1.44	52,00
K651264	2.5	40	32.5		3	2		1.93	56,00
K651242	3	10	6.5		3	1.5		0.45	28,00
K651253	3	20	16.5		3	1.5		0.72	32,00
K651260	3	30	27.5		3	2		1.46	56,00
K651265	3	40	37.5		3	2		1.88	60,00
K651268	3	50	47.5		3	2		2.35	60,00
K651261	4	30	30		3	2		1.56	56,00
K651266	4	40	40		3	2		2	60,00
K651269	4	50	50		3	2		2.52	60,00
K651243	5	10	10		3	2		0.77	37,00
K650866	5	20	20		3	2		1.15	56,00
K651254	5	20	20		3	2.5		1.47	56,00
K651262	5	30	30		3	2.5		2.18	56,00
K651267	5	40	40		3	2.5		2.89	60,00
K651270	5	50	50		3	2.5		3.6	60,00
K651244	6	10	10		3	2		0.96	38,00
K651255	6	25	25		3	2		1.63	42,00

STYL M2

Stylus tungsten carbide

base stainless steel
stem tungsten carbide
ball ruby



Part No.	S mm	L mm	ML mm	ML1 mm	D mm	DS mm	DS1 mm	Weight g	Price €
K651233	0.3	10	4	2	3	0.7	0.2	0.27	108,00
K651234	0.5	10	4	2	3	1	0.3	0.29	97,00
K651276	0.5	10	4	3	3	0.7	0.3	0.26	97,00
K651235	0.5	20	12	2	3	1	0.3	0.45	97,00

Stylus ceramic

base stainless steel
stem ceramic
ball ruby

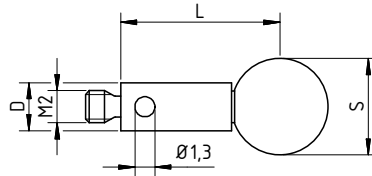


Part No.	S mm	L mm	ML mm	ML1 mm	D mm	DS mm	DS1 mm	Weight g	Price €
K651009	3	50	47.5		3	2		0.84	66,00
K651325	3	83.5	68.5		3	2		1.56	81,00
K651231	4	10	10		3	2		0.38	37,00
K651004	4	20	20		3	2		0.51	38,00
K651006	4	30	30		3	2		0.67	44,00
K651008	4	40	40		3	2		0.77	62,00
K651010	4	50	50		3	2		0.9	66,00
K651327	4	98	98		3	3		2.91	50,00
K651232	5	10	10		3	2		0.65	40,00
K651005	5	20	20		3	2		0.63	38,00
K651007	5	30	30		3	2		0.79	66,00
K651011	5	50	50		3	2,5		1.3	66,00
K651328	5	97.5	97.5		3	3		2.99	60,00
K651003	6	10	10		3	2		0.69	40,00

Styli M2

Stylus steel

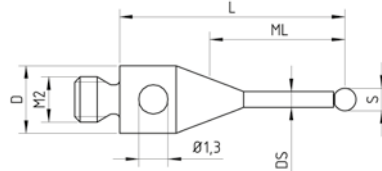
base stainless steel
ball ruby



Part No.	S mm	L mm	ML mm	ML1 mm	D mm	DS mm	DS1 mm	Weight g	Price €
K651026	6	25	25		3			1.7	38,00
K651023	8	9	9		3			1.4	48,00

Stylus steel

base stainless steel
ball ruby

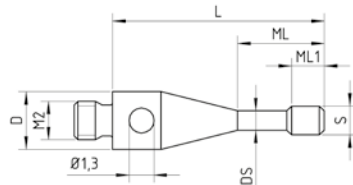


Part No.	S mm	L mm	ML mm	ML1 mm	D mm	DS mm	DS1 mm	Weight g	Price €
K651012	1	10	4.5		3	0.7		0.23	29,00
K651013	1.5	10	4.5		3	0.7		0.25	24,00
K651014	2	10	6		3	1		0.24	20,00
K651019	2	20	14		3	1.4		0.43	23,00
K651015	2.5	10	6		3	1		0.26	22,00
K651020	2.5	20	14		3	1.4		0.45	24,00
K651016	3	10	7.5		3	1.5		0.34	24,00
K651021	3	20	17.5		3	1.5		0.51	25,00
K651324	3	68	60		3	1.5		1.22	62,00
K651017	4	10	10		3	1.5		0.42	23,00
K651022	4	20	20		3	1.5		0.51	26,00
K651326	4	68	68		3	2		1.82	68,00
K651018	5	10	10		3	2.5		0.63	32,00
K651024	6	10	10		3	2.5		0.82	36,00
K651025	8	11	11		3	2.5		1.49	66,00

STYL M2

Cylinder stylus, steel

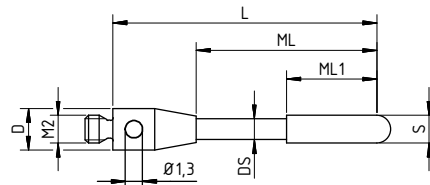
stainless steel



Part No.	S mm	L mm	ML mm	ML1 mm	D mm	DS mm	DS1 mm	Weight g	Price €
K651030	1.5	11	4.5	1.7	3	1		0.28	18,00
K651031	3	13	8	4	3	1.5		0.49	18,00

Cylinder stylus, ruby

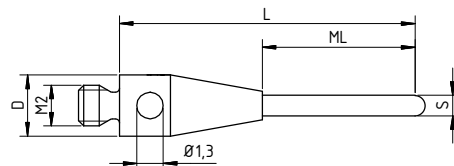
base stainless steel
stem tungsten carbide
tip ruby



Part No.	S mm	L mm	ML mm	ML1 mm	D mm	DS mm	DS1 mm	Weight g	Price €
K651032	2	20	13	6.5	3	1.5		0.47	135,00
K651033	4	20	13	8.5	3	2		0.9	312,00

Cylinder stylus, ruby

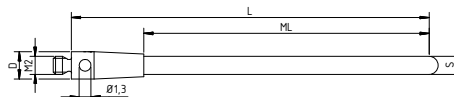
base stainless steel
tip ruby



Part No.	S mm	L mm	ML mm	ML1 mm	D mm	DS mm	DS1 mm	Weight g	Price €
K651034	1	14.5	7.5		3			0.28	143,00
K651035	1.5	14.25	7.25		3			0.3	192,00

Cylinder stylus, tungsten carbide

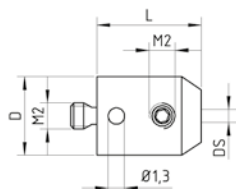
base stainless steel
tip tungsten carbide



Part No.	S mm	L mm	ML mm	ML1 mm	D mm	DS mm	DS1 mm	Weight g	Price €
K651036	2	39	31		3			1.87	64,00

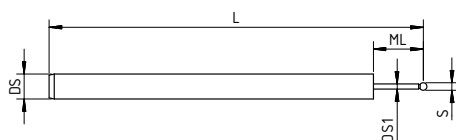
Styli M2

Stylus holder stainless steel



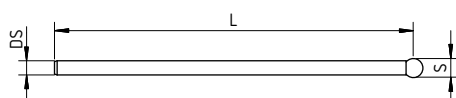
Part No.	S mm	L mm	ML mm	ML1 mm	D mm	DS mm	DS1 mm	Weight g	Price €
K651065		8			6	1.0 G7		1.54	18,00
K651066		8			6	1.5 G7		1.51	18,00
K651067		8			6	2.0 G7		1.47	18,00

Stylus for holder stem tungsten carbide ball ruby



Part No.	S mm	L mm	ML mm	ML1 mm	D mm	DS mm	DS1 mm	Weight g	Price €
K651068	0.3	15.15	2.15			1	0.2	0.14	62,00
K651069	0.5	15.25	2.25			1	0.3	0.15	39,00
K651070	0.6	15.3	4.3			1	0.4	0.13	36,00
K651071	0.8	15.4	4.4			1	0.6	0.14	32,00
K651072	1	15.5	4.5			1	0.8	0.15	27,00

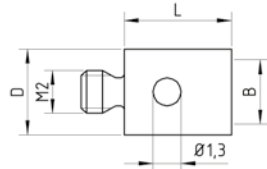
Stylus for holder stem tungsten carbide ball ruby



Part No.	S mm	L mm	ML mm	ML1 mm	D mm	DS mm	DS1 mm	Weight g	Price €
K651073	1.3	25.7				1		0.28	21,00
K651074	1.5	25.75				1		0.29	21,00
K651075	2	26				1.5		0.65	38,00
K651076	2.5	26.25				1.5		0.67	39,00
K651077	3	26.5				2		1.24	38,00
K651080	3	36.5				2		1.62	39,00
K651078	4	27.2				2		1.37	37,00
K651079	5	27.5				2		1.51	38,00

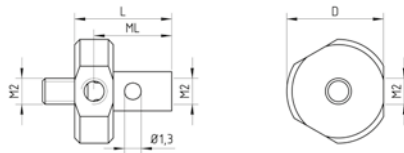
STYLUS M2

Adaptor stainless steel



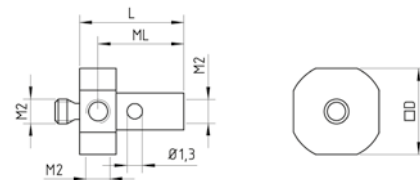
Part No.	S mm	L mm	ML mm	ML1 mm	D mm	DS mm	B	Weight g	Price €
K651061		5			4		M3	0.29	12,00
K651062		7			4		M3	0.42	11,00
K651063		10			4		M3	0.58	12,00
K651064		10			5		M4	0.79	12,00

4-way stylus holder stainless steel, rotatable



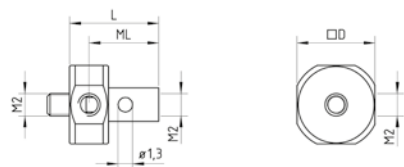
Part No.	S mm	L mm	ML mm	ML1 mm	D mm	DS mm	DS1 mm	Weight g	Price €
K651056		7.5	6		7.5			1.07	61,00

5-way stylus holder stainless steel, fixed



Part No.	S mm	L mm	ML mm	ML1 mm	D mm	DS mm	DS1 mm	Weight g	Price €
K651057		8.5	7		7			0.96	31,00

5-way stylus holder stainless steel, rotatable

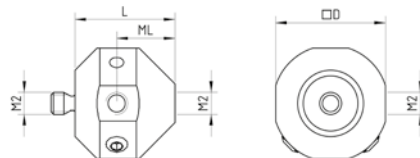


Part No.	S mm	L mm	ML mm	ML1 mm	D mm	DS mm	DS1 mm	Weight g	Price €
K651058		7.5	6		7			0.92	39,00

Styli M2

5-way stylus holder, large

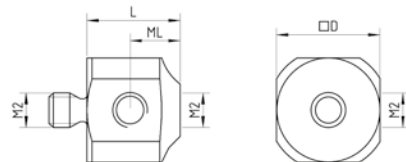
stainless steel, rotatable



Part No.	S mm	L mm	ML mm	ML1 mm	D mm	DS mm	B mm	Weight g	Price €
K651059		9.1	5.3		10			3.62	62,00

5-way stylus holder, small

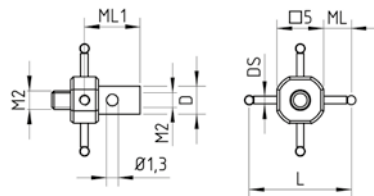
stainless steel, fixed



Part No.	S mm	L mm	ML mm	ML1 mm	D mm	DS mm	B mm	Weight g	Price €
K651060		5.4	2.9		6			0.94	31,00

4-way stylus

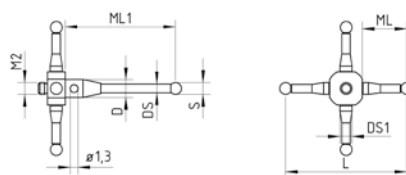
base stainless steel
stem tungsten carbide
ball ruby



Part No.	S mm	L mm	ML mm	ML1 mm	D mm	DS mm	DS1 mm	Weight g	Price €
K651052	1	10	2.5	6	3	0.7		0.5	168,00

5-way stylus

base stainless steel
stem tungsten carbide
stainless steel
ball ruby

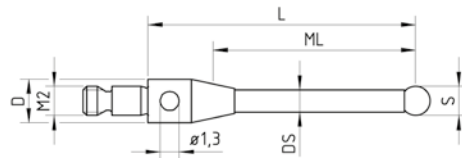


Part No.	S mm	L mm	ML mm	ML1 mm	D mm	DS mm	DS1 mm	Weight g	Price €
K651053	2	18	5.25	16.5	2H7	1.4	2	1.54	126,00
K650451	2	20	7.2	18.5	2H7	1.4	2	1.74	108,00
K651054	2	30	10.75	16.5	2H7	1.4	2	1.88	121,00

STYLI M2

Stylus for 5-way stylus

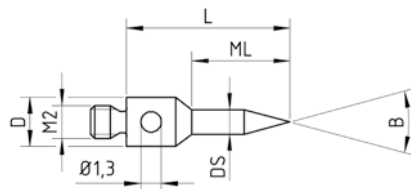
base stainless steel
stem tungsten carbide
ball ruby



Part No.	S mm	L mm	ML mm	ML1 mm	D mm	DS mm	DS1 mm	Weight g	Price €
K650449	2	18.5	12.5		3	1.5		0.63	34,00
K651055	2	16.5	11		3	1.4		0.57	39,00

Tip stylus, steel

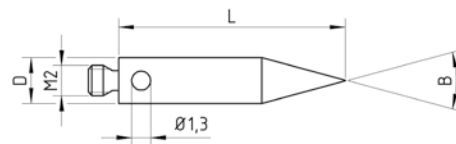
steel, hardened



Part No.	S mm	L mm	ML mm	ML1 mm	D mm	DS mm	B mm	Weight g	Price €
K651095		10	6		3	1.5	30°	0.26	17,00
K651096		10	6		3	1.5	60°	0.27	17,00

Tip stylus, steel

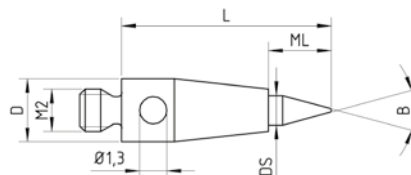
steel, hardened



Part No.	S mm	L mm	ML mm	ML1 mm	D mm	DS mm	B	Weight g	Price €
K651097		15			3		30°	0,61	23,00

Tip stylus, tungsten carbide

base stainless steel
stem tungsten carbide

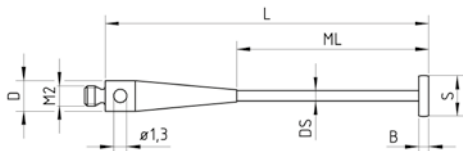


Part No.	S mm	L mm	ML mm	ML1 mm	D mm	DS mm	B	Weight g	Price €
K651098		10	3		3	1.4	30°	0.37	68,00

Styli M2

Disk stylus ruby

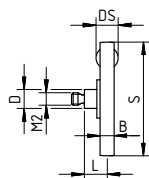
base stainless steel
stem tungsten carbide
disk ruby



Part No.	S mm	L mm	ML mm	ML1 mm	D mm	DS mm	B mm	Weight g	Price €
K651086	4	32	19		3	1	1	0.78	123,00
K651087	8	32	19		3	1.5	1.5	1.38	169,00

Disk stylus steel

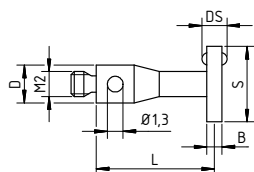
base stainless steel
disk hardened steel



Part No.	S mm	L mm	ML mm	ML1 mm	D mm	DS mm	B mm	Weight g	Price €
K651081	18	2.6			3	3	2.3	4	176,00
K651082	25	2.5			3	no ball	3.1	5	159,00
K651083	18	7.5			3	2.5	1.6	4.5	194,00
K651084	25	7.5			3	2.5	1.6	6.6	178,00

Disk stylus ruby

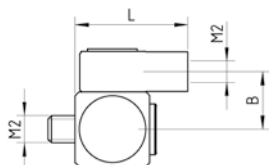
base stainless steel
disk ruby



Part No.	S mm	L mm	ML mm	ML1 mm	D mm	DS mm	B mm	Weight g	Price €
K651085	6	10			3	2	1.2	0.6	114,00

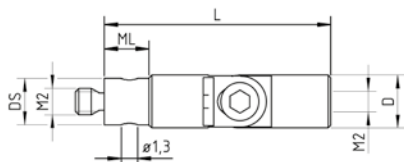
STYLI M2

Knuckle joint stainless steel



Part No.	S mm	L mm	ML mm	ML1 mm	D mm	DS mm	B mm	Weight g	Price €
K651100		8					4.5	1.67	53,00

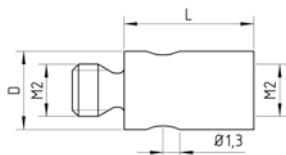
Knuckle/swivel joint stainless steel



Part No.	S mm	L mm	ML mm	ML1 mm	D mm	DS mm	DS1 mm	Weight g	Price €
K651101		17.2	3.4		4	3.5		1.38	58,00

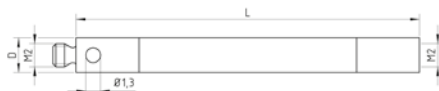
Styli M2

Extension steel stainless steel



Part No.	S mm	L mm	ML mm	ML1 mm	D mm	DS mm	DS1 mm	Weight g	Price €
K651037		5			3			0.2	10,00
K651038		10			3			0.41	12,00
K651039		20			3			0.96	13,00
K651040		30			3			1.53	14,00
K651041		40			3			2.05	16,00
K651042		60			3			2.7	18,00
K651043		90			3			3.8	19,00

Extension ceramic end pieces stainless steel stem ceramic



Part No.	S mm	L mm	ML mm	ML1 mm	D mm	DS mm	DS1 mm	Weight g	Price €
K651044		30			3			0.99	58,00
K651045		40			3			1.26	60,00
K651046		50			3			1.54	63,00
K651047		60			3			1.82	65,00

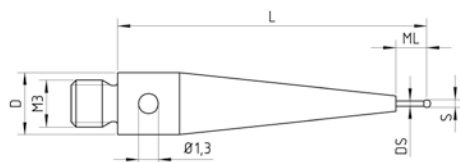
Components for measuring heads **TP8**
SP25M
WITH M3 THREAD



Styli M3

Stylus tungsten carbide

base stainless steel
stem tungsten carbide
ball ruby

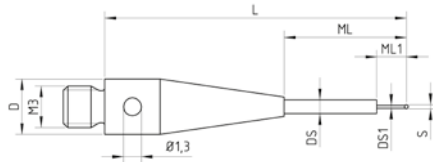


Part No.	S mm	L mm	ML mm	ML1 mm	D mm	DS mm	DS1 mm	Weight g	Price €
K651111	0.5	20	2		4	0.35		1.09	127,00
K651107	1	10	5		4	0.8		0.53	39,00
K651329	1	22	12		4	0.8		0.8	54,00
K651330	1	32	25		4	0.8		0.81	52,00
K651112	1.5	20	12.5		4	1		0.82	52,00
K651118	1.5	21.25	9		4	1		1.05	49,00
K651119	1.5	30	22.5		4	1		0.92	56,00
K651109	2	20	14.5		4	1		0.71	36,00
K651113	2	21	10		4	1		1.01	27,00
K651120	2	30	22		4	1.5		1.28	52,00
K651127	2	40	32.5		4	1.5		1.54	56,00
K651114	2.5	21	14		4	1.5		1.07	52,00
K651121	2.5	30	22		4	2		1.79	52,00
K651128	2.5	40	32		4	2		2.28	56,00
K651110	3	20	15.5		4	1.5		1.25	31,00
K651122	3	30	22.5		4	2		1.79	56,00
K651126	3	38.5	22		5.5	2		3.87	38,00
K651129	3	40	32.5		4	2		2.22	60,00
K651132	3	50	42.5		4	2		2.49	60,00
K651332	3	64	50		4	2		3.61	48,00
K651115	4	21	16.5		4	2		1.54	52,00
K651123	4	30	27		4	2		1.8	52,00
K651130	4	40	36		4	2		2.35	60,00
K651133	4	50	46		4	2		2.69	60,00
K651333	4	59	52		4	2		3.15	52,00
K651116	5	21	21		4	2		1.64	53,00
K651124	5	31	31		4	2		2.01	53,00
K651131	5	40	40		4	2		2.49	60,00
K651134	5	50	50		4	2		2.98	60,00
K651117	8	21	21		4	3		3.14	62,00

STYLI M3

Stylus tungsten carbide

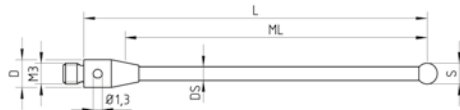
base stainless steel
stem tungsten carbide
ball ruby



Part No.	S mm	L mm	ML mm	ML1 mm	D mm	DS mm	DS1 mm	Weight g	Price €
K651106	0.3	21.85	8.85	2	4	1	0.2	0.98	56,00
K651105	0.5	21.75	8.75	2	4	1	0.3	1	54,00
K651104	0.6	21.7	8.7	4	4	1	0.4	1.07	52,00
K651103	0.8	21.6	8.6	4	4	1	0.6	0.98	40,00
K651102	1	21.5	8.5	4	4	1	0.8	0.99	36,00

Stylus ceramic

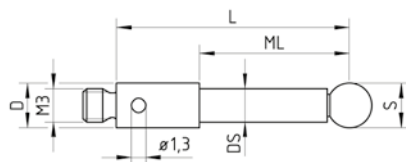
base stainless steel
stem ceramic
ball ruby



Part No.	S mm	L mm	ML mm	ML1 mm	D mm	DS mm	DS1 mm	Weight g	Price €
K651143	3	50	43		4	2		1.19	67,00
K651136	4	21	16.5		4	2		0.98	34,00
K651140	4	30	27		4	2		0.89	40,00
K651141	4	40	35.5		4	2		1.13	46,00
K651144	4	50	45.5		4	2		1.27	67,00
K651137	5	21	21		4	2		1	37,00
K651139	5	29.5	29.5		4	2		1.33	41,00
K651142	5	40	40		4	2		1.45	43,00
K651145	5	50	50		4	2.5		1.63	67,00
K651135	6	10	10		4	2		0.86	38,00
K651138	8	21	21		4	2		1.89	67,00
K651334	8	130	110		6	4		9.52	144,00

Stylus carbon fiber

base stainless steel
stem carbon fiber
ball silicon nitride

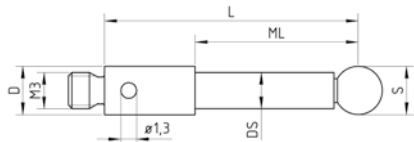


Part No.	S mm	L mm	ML mm	ML1 mm	D mm	DS mm	DS1 mm	Weight g	Price €
K651301	4	21	13.5		4	3		0.88	78,00
K651304	5	21	21		4	3		0.91	80,00

Styli M3

Stylus carbon fiber

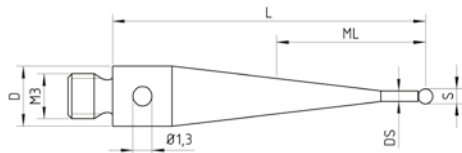
base stainless steel
stem carbon fiber
ball ruby



Part No.	S mm	L mm	ML mm	ML1 mm	D mm	DS mm	DS1 mm	Weight g	Price €
K651297	3	21	14.7		4	2		0.76	49,00
K651298	4	21	13.5		4	3		0.88	52,00
K651299	4	31	23.5		4	3		0.95	58,00
K651300	4	40	32.5		4	3		1	60,00
K651302	5	21	21		4	3		0.91	67,00
K651303	5	50	50		4	3		1.11	70,00
K651305	6	50	50		4	4		1.76	77,00
K651306	6	75	75		4	4		2.26	80,00
K651307	6	100	100		4	4		2.76	84,00
K651308	8	75	75		4	4		2.43	95,00
K651309	8	100	100		4	4		2.94	103,00

Stylus steel

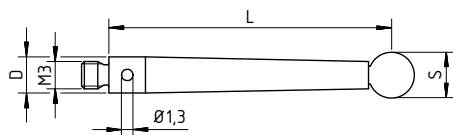
base stainless steel
ball ruby



Part No.	S mm	L mm	ML mm	ML1 mm	D mm	DS mm	DS1 mm	Weight g	Price €
K651146	1	21	4		4	0.7		1.05	33,00
K651147	2	21	8		4	1.4		1.06	28,00
K651148	3	21	12		4	1.5		0.96	29,00
K651149	4	21	17		4	2.5		1.38	30,00
K651151	4	31	27		4	2.5		1.78	31,00
K651150	5	21	21		4	2.5		1.48	33,00

Stylus steel

base stainless steel
ball ruby

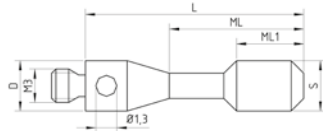


Part No.	S mm	L mm	ML mm	ML1 mm	D mm	DS mm	DS1 mm	Weight g	Price €
K651152	5	31			4			2.61	34,00

STYLUS M3

Cylinder stylus, steel

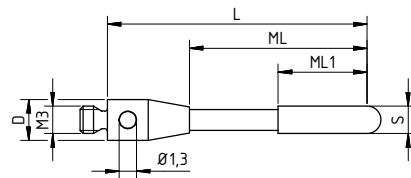
stainless steel



Part No.	S mm	L mm	ML mm	ML1 mm	D mm	DS mm	DS1 mm	Weight g	Price €
K651153	1.5	11	5	1.5	4			0.53	17,00
K651154	3	13	8.5	4	4			0.79	17,00

Cylinder stylus, ruby

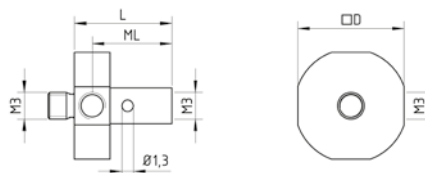
base stainless steel
stem tungsten carbide
tip ruby



Part No.	S mm	L mm	ML mm	ML1 mm	D mm	DS mm	DS1 mm	Weight g	Price €
K651155	2	19	13	6.5	4			0.83	229,00

5-way stylus holder

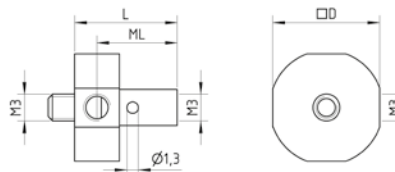
stainless steel, fixed



Part No.	S mm	L mm	ML mm	ML1 mm	D mm	DS mm	DS1 mm	Weight g	Price €
K651167		11	9		12			3.28	36,00

5-way stylus holder

stainless steel, rotatable

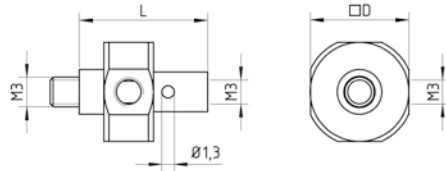


Part No.	S mm	L mm	ML mm	ML1 mm	D mm	DS mm	DS1 mm	Weight g	Price €
K651168		11.5	9		12			4.24	43,00

Styli M3

5-way stylus holder

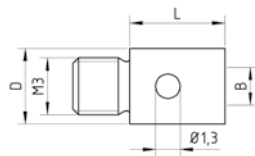
stainless steel, rotatable



Part No.	S mm	L mm	ML mm	ML1 mm	D mm	DS mm	DS1 mm	Weight g	Price €
K651169		13			10			3.23	46,00

Adaptor

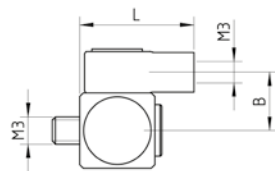
stainless steel



Part No.	S mm	L mm	ML mm	ML1 mm	D mm	DS mm	B	Weight g	Price €
K651170		5			4		M2	0.41	10,00
K651171		10			5		M4	0.9	12,00

Knuckle joint

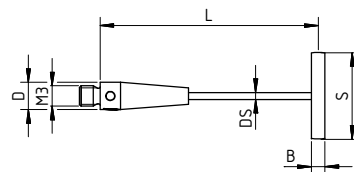
stainless steel



Part No.	S mm	L mm	ML mm	ML1 mm	D mm	DS mm	B mm	Weight g	Price €
K651180		11.5			4		5.5	3.71	53,00

Disk stylus steel

base stainless steel
stem tungsten carbide
disk hardened steel

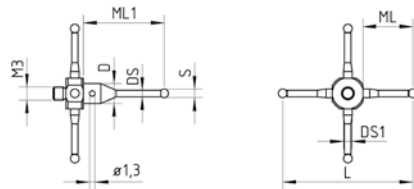


Part No.	S mm	L mm	ML mm	ML1 mm	D mm	DS mm	B mm	Weight g	Price €
K651172	12.7	31			4	3.5	2.3	4	119,00

STYLI M3

4-way stylus

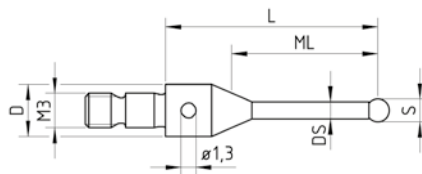
base stainless steel
stem tungsten carbide
stainless steel
ball ruby



Part No.	S mm	L mm	ML mm	ML1 mm	D mm	DS mm	DS1 mm	Weight g	Price €
K651163	2	30	8	18.5	3H7	1.5	2	1.82	127,00
K651164	2	50	12	28.5	3H7	1.5	2	2.58	132,00

Stylus for multi-way stylus

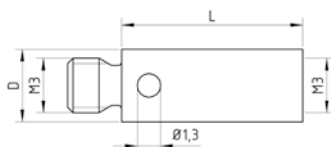
base stainless steel
ball ruby



Part No.	S mm	L mm	ML mm	ML1 mm	D mm	DS mm	DS1 mm	Weight g	Price €
K651165	2	18.5	11		4.5	1.5		1.16	39,00
K651166	2	28.5	13		4.5	1.5		1.75	39,00

Styli M3

Extension steel stainless steel



Part No.	S mm	L mm	ML mm	ML1 mm	D mm	DS mm	DS1 mm	Weight g	Price €
K651156		10			4			0.76	10,00
K651157		20			4			1.58	14,00
K651158		30			4			2.63	16,00
K651159		35			4			3.16	15,00
K651160		40			4			3.47	18,00
K651161		50			4			4.44	20,00

Extension ceramic end pieces stainless steel stem ceramic



Part No.	S mm	L mm	ML mm	ML1 mm	D mm	DS mm	DS1 mm	Weight g	Price €
K651162		50			4			2.78	67,00

Components for measuring heads WITH M4 THREAD

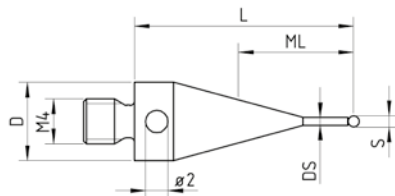
TP7
SP600
MPP310
MTP2000



Styli M4

Stylus steel

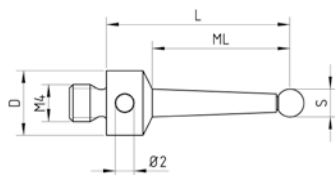
base stainless steel
ball ruby



Part No.	S mm	L mm	ML mm	ML1 mm	D mm	DS mm	DS1 mm	Weight g	Price €
K651186	1	19.5	4		7	0.7		2.52	42,00
K651187	2	19	8		7	1.35		2.25	36,00
K651188	4	18	13		7	3		2.13	32,00
K651185	5	17.5	12.5		7	3.5		2.39	34,00
K651189	5	20	15		7	3.5		2.3	32,00
K651192	5	50	36		7	4		4.72	50,00
K651193	5	100	86		7	4		11.3	57,00
K651190	6	20	15.5		7	4.5		3.51	34,00
K651191	8	20	20		7	5.5		4.72	48,00

Stylus steel

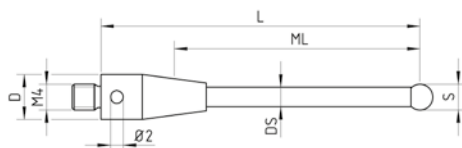
base stainless steel
ball ruby



Part No.	S mm	L mm	ML mm	ML1 mm	D mm	DS mm	DS1 mm	Weight g	Price €
K651194	3	20	14.5		7			2.03	32,00

Stylus ceramic

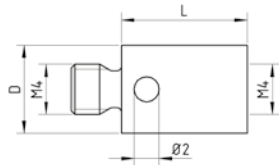
base stainless steel
stem ceramic
ball ruby



Part No.	S mm	L mm	ML mm	ML1 mm	D mm	DS mm	DS1 mm	Weight g	Price €
K651321	4	50	33.5		7	3		4.73	59,00
K651404	6	50	36		7	4		5.09	60,00
K651403	6	100	86		7	4		7.76	64,00
K651182	8	50	50		7	4.5		6.06	76,00
K651184	8	100	100		7	4.5		9.14	93,00

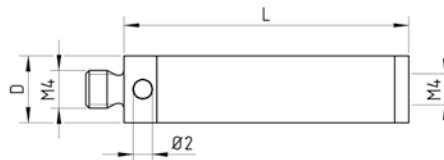
STYLI M4

Extension steel stainless steel



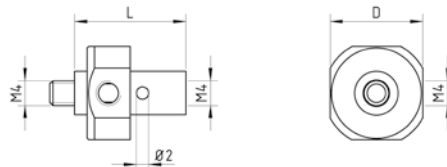
Part No.	S mm	L mm	ML mm	ML1 mm	D mm	DS mm	DS1 mm	Weight g	Price €
K651199		10			7			2.39	17,00
K651200		15			7			3.81	17,00
K651201		20			7			5.33	18,00
K651202		30			7			8.52	18,00

Extension ceramic end pieces stainless steel stem ceramic



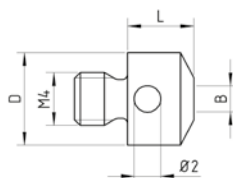
Part No.	S mm	L mm	ML mm	ML1 mm	D mm	DS mm	DS1 mm	Weight g	Price €
K651203		30			7			5.09	37,00
K651204		50			7			6.15	54,00
K651205		100			7			10.6	92,00

5-way stylus holder stainless steel, rotatable



Part No.	S mm	L mm	ML mm	ML1 mm	D mm	DS mm	DS1 mm	Weight g	Price €
K651206		18			15			12.1	51,00

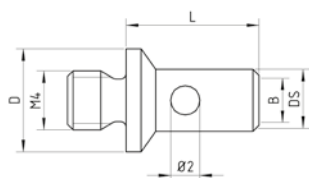
Adaptor stainless steel



Part No.	S mm	L mm	ML mm	ML1 mm	D mm	DS mm	B mm	Weight g	Price €
K651207		5			7		M2	1.41	16,00

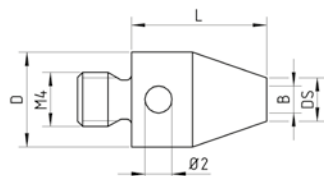
Styli M4

Adaptor stainless steel



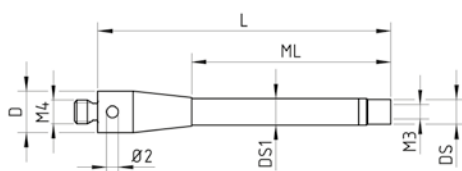
Part No.	S mm	L mm	ML mm	ML1 mm	D mm	DS mm	B mm	Weight g	Price €
K651208		9			7	4.2	M3	1.45	16,00
K651209		20			7	4.2	M3	6.15	20,00

Adaptor stainless steel



Part No.	S mm	L mm	ML mm	ML1 mm	D mm	DS mm	B mm	Weight g	Price €
K651212		10			7	3.2	M2	2.2	13,00
K651213		10			7	4.2	M3	2.2	13,00

Adaptor ceramic end pieces stainless steel stem ceramic



Part No.	S mm	L mm	ML mm	ML1 mm	D mm	DS mm	DS1 mm	Weight g	Price €
K651214		50	34		7	4.2	4.5	4.4	54,00
K651215		75	59		7	4.2	4.5	5.48	62,00
K651216		100	84		7	4.2	4.5	6.71	71,00

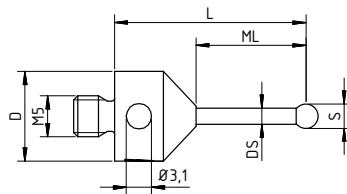
Components for measuring heads SP80
WITH M5 THREAD



Styli M5

Stylus tungsten carbide

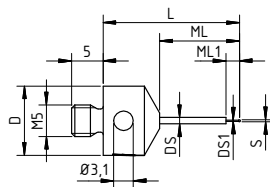
base titanium
stem tungsten carbide
ball ruby



Part No.	S mm	L mm	ML mm	ML1 mm	D mm	DS mm	DS1 mm	Weight g	Price €
K650090	3	23.5	13.5		11	2		3.88	26,00
K650089	3	32	22		11	2		4.29	27,00
K650087	3	48.5	38.5		11	2		4.98	27,00
K650080	3	56.5	46.5		11	2		5.38	26,00
K650088	4	31.5	21.5		11	2		4.43	34,00
K650085	4	62	52		11	2		5.79	35,00
K650084	5	47.5	37.5		11	3.5		8.95	32,00
K650086	5	50.5	40.5		11	3.5		9.28	30,00
K650074	5	72.5	62.5		11	3.5		12.49	33,00
K650083	6	51	41		11	3.5		9.47	39,00
K650082	7	51.5	41.5		11	3.5		9.76	46,00
K650078	8	59.5	46.5		11	6		24.64	43,00
K650073	8	71	58		11	6		29.84	66,00
K650072	8	96	83		11	6		41.16	67,00
K650107	8	110.5	97.5		11	6		46.24	68,00
K650076	9	60	46		11	6		25.32	58,00
K650079	10	60.5	17.5		11	6		25.86	98,00
K650106	10	113	100		11	6		47.67	100,00

Stylus tungsten carbide

base stainless steel
stem tungsten carbide
ball ruby

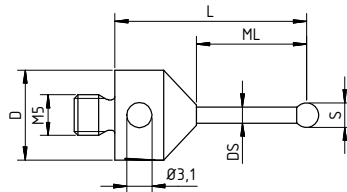


Part No.	S mm	L mm	ML mm	ML1 mm	D mm	DS mm	DS1 mm	Weight g	Price €
K650691	0.3	21.65	12.65	2.3	11	1	0.2	6.44	57,00
K650692	0.5	21.75	12.75	2.5	11	1	0.3	6.34	50,00
K650693	0.6	21.8	12.8	4.6	11	1	0.4	6.27	44,00
K650687	0.8	21.9	12.9	4.8	11	1	0.6	6.34	40,00
K650689	1	22	13	5	11	1	0.8	6.39	41,00

STYL M5

Stylus tungsten carbide

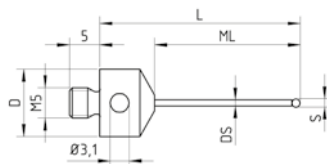
base titanium
stem tungsten carbide
ball silicon nitride



Part No.	S mm	L mm	ML mm	ML1 mm	D mm	DS mm	DS1 mm	Weight g	Price €
K656000	3	23.5	13.5		11	2		3.88	89,00
K656001	3	32	22		11	2		4.29	92,00
K656002	3	48.5	38.5		11	2		4.98	99,00
K656003	3	56.5	46.5		11	2		5.38	100,00
K656004	4	31.5	21.5		11	2		4.43	95,00
K656005	4	62	52		11	2		5.79	101,00
K656006	5	47.5	37.5		11	3.5		8.95	97,00
K656007	5	50.5	40.5		11	3.5		9.28	101,00
K656008	5	72.5	62.5		11	3.5		12.49	105,00
K656009	6	51	41		11	3.5		9.47	100,00
K656010	7	51.5	41.5		11	3.5		9.76	103,00
K656011	8	59.5	46.5		11	6		24.64	116,00
K656013	8	70	57		11	6		29.67	118,00
K656014	8	71	58		11	6		29.84	118,00
K656015	8	96	83		11	6		41.16	121,00
K656018	9	60	46		11	6		25.32	117,00
K656020	10	60.5	17.5		11	6		25.86	124,00

Stylus tungsten carbide

base stainless steel
stem tungsten carbide
ball ruby

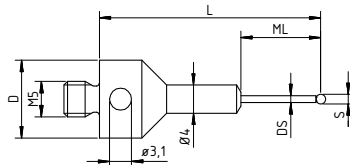


Part No.	S mm	L mm	ML mm	ML1 mm	D mm	DS mm	DS1 mm	Weight g	Price €
K650688	1.35	32.225	23.225		11	1		6.6	31,00
K650685	1.5	32.25	23.25		11	1		6.59	30,00
K650686	2	32.5	23.5		11	1.5		6.82	27,00
K650690	2.5	32.75	23.75		11	1.5		6.96	28,00

Styli M5

Stylus tungsten carbide

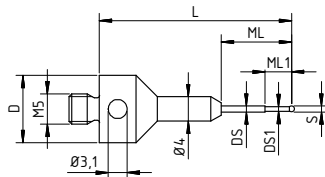
base titanium
stem tungsten carbide
ball ruby



Part No.	S mm	L mm	ML mm	ML1 mm	D mm	DS mm	DS1 mm	Weight g	Price €
K650648	1.35	31.325	11.325		11	1		3.87	42,00
K650649	1.35	43.325	18.325		11	1		4.24	44,00
K650650	1.5	31.25	11.25		11	1		3.82	39,00
K650651	1.5	43.25	18.25		11	1		4.24	42,00
K650652	2	31	11		11	1.5		4.07	39,00
K650658	2	43	18		11	1.5		4.49	41,00
K650659	2	57	32		11	1.5		4.88	39,00
K650660	2.5	30.75	10.75		11	1.5		4.07	41,00
K650653	2.5	42.75	17.75		11	1.5		4.58	42,00
K650661	2.5	56.75	31.75		11	1.5		4.9	45,00

Stylus tungsten carbide

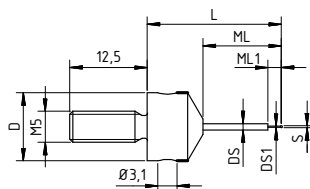
base titanium
stem tungsten carbide
ball ruby



Part No.	S mm	L mm	ML mm	ML1 mm	D mm	DS mm	DS1 mm	Weight g	Price €
K650646	0.8	31.2	11.2	4.8	11	1	0.6	3.77	45,00
K650647	1	31	11	5	11	1	0.8	3.9	45,00

Stylus for multi-way stylus

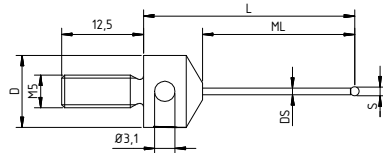
base stainless steel
stem tungsten carbide
ball ruby



Part No.	S mm	L mm	ML mm	ML1 mm	D mm	DS mm	DS1 mm	Weight g	Price €
K650329	0.3	21.65	12.65	2.3	11	1	0.2	6.44	56,00
K650328	0.5	21.75	12.75	2.5	11	1	0.3	6.34	53,00
K650327	0.6	21.8	12.8	4.6	11	1	0.4	6.27	50,00
K650326	0.8	21.9	12.9	4.8	11	1	0.6	6.34	48,00
K650325	1	22	13	5	11	1	0.8	6.39	47,00

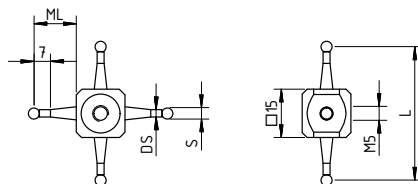
STYLII M5

Stylus for multi-way stylus
base stainless steel
stem tungsten carbide
ball ruby



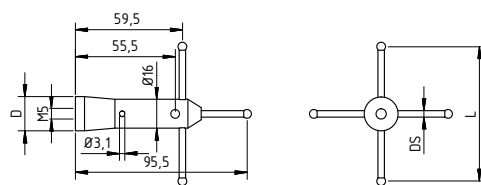
Part No.	S mm	L mm	ML mm	ML1 mm	D mm	DS mm	DS1 mm	Weight g	Price €
K650324	1.35	32.225	23.225		11	1		6.6	47,00
K650323	1.5	32.25	23.25		11	1		6.59	45,00
K650322	2	32.5	23.5		11	1.5		6.82	46,00
K650321	2.5	32.75	23.75		11	1.5		6.96	47,00

4-way cube
cube titanium
stem tungsten carbide
ball ruby



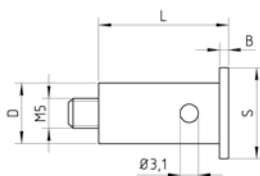
Part No.	S mm	L mm	ML mm	ML1 mm	D mm	DS mm	DS1 mm	Weight g	Price €
K650114	1	44	14.5			0.7		15.3	147,00
K650113	1.5	43.5	14.25			1.1		14.93	147,00
K650112	2	43	14			1.5		15.1	149,00
K650111	2.5	42.5	13.75			1.8		15.46	156,00
K650555	3.5	41.5	13.25			2.2		16.64	156,00

Multi-way stylus
base aluminium
stem tungsten carbide
ball ruby



Part No.	S mm	L mm	ML mm	ML1 mm	D mm	DS mm	DS1 mm	Weight g	Price €
K650069	5	75			19	3.5		63.05	343,00

Ball disk stylus
base aluminium
disk hardened steel or ceramic

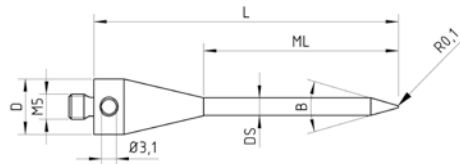


Part No.	disc	S mm	L mm	ML mm	D mm	DS mm	B mm	Weight g	Price €
K650357	steel	10	21.5		7		1.5	3.57	111,00
K650356	steel	15	21.5		10		1.5	6.34	112,00
K650170	ceramic	15	40		7		1	5	193,00
K650164	ceramic	20	60		7		1	8	250,00

Styli M5

Tip stylus

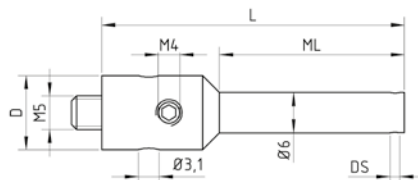
base titanium
stem tungsten carbide



Part No.	S mm	L mm	ML mm	ML1 mm	D mm	DS mm	B	Weight g	Price €
K650068		61	39		11	3.5	30°	12.13	55,00

Stylus holder

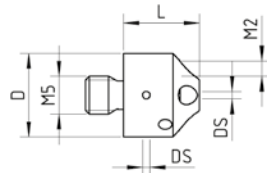
base stainless steel



Part No.	S mm	L mm	ML mm	ML1 mm	D mm	DS mm	DS1 mm	Weight g	Price €
K650361		45	27.5		11	1.0-1.5		11.15	53,00

5-way stylus holder

stainless steel

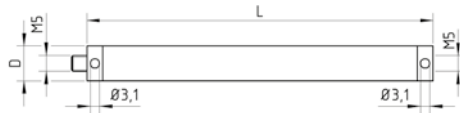


Part No.	S mm	L mm	ML mm	ML1 mm	D mm	DS mm	DS1 mm	Weight g	Price €
K650128		10			11	1		5.73	47,00
K650122		10			11	1.5		5.62	47,00

STYLI M5

Extension carbon fibre thermo

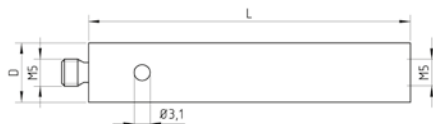
end pieces titanium
improved bending strength
and torsion
resistance thermostable



Part No.	S mm	L mm	ML mm	ML1 mm	D mm	DS mm	DS1 mm	Weight g	Price €
K656023		40			11			7.6	116,00
K656024		50			11			8.3	122,00
K656025		60			11			9	123,00
K656026		70			11			9.7	126,00
K656027		80			11			10.4	129,00
K656028		90			11			11.1	131,00
K656029		100			11			11.8	132,00
K656030		120			11			13.2	139,00
K656031		150			11			15.4	150,00
K656032		180			11			17.5	159,00
K656033		200			11			18.9	161,00
K656034		250			11			22.4	181,00
K656035		300			11			25.9	195,00
K656036		400			11			33.0	116,00
K656037		40			20			23.8	118,00
K656038		50			20			25.1	122,00
K656039		60			20			26.5	125,00
K656040		80			20			29.3	132,00
K656041		100			20			32.1	140,00
K656042		120			20			34.9	146,00
K656043		150			20			39.0	156,00
K656044		180			20			43.2	167,00
K656045		200			20			46.0	174,00
K656046		250			20			52.9	191,00
K656047		300			20			59.9	209,00
K656048		400			20			73.8	244,00
K656049		500			20			87.7	278,00
K656050		600			20			101.5	313,00

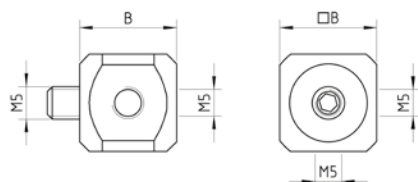
Styli M5

Extension steel stainless steel



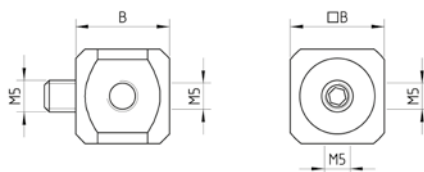
Part No.	S mm	L mm	ML mm	ML1 mm	D mm	DS mm	DS1 mm	Weight g	Price €
K650341		10			11			6.16	24,00
K650342		15			11			9.74	23,00
K650343		20			11			13.04	23,00
K650344		40			11			27.51	19,00
K650345		60			11			42.76	19,00
K650301		80			11			57.01	19,00
K650302		100			11			73.17	19,00

Cube titanium



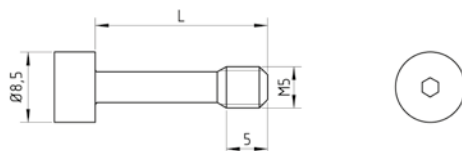
Part No.	S mm	L mm	ML mm	ML1 mm	D mm	DS mm	B mm	Weight g	Price €
K650052							15	11.65	51,00
K650051							20	31.09	55,00

Cube aluminium



Part No.	S mm	L mm	ML mm	ML1 mm	D mm	DS mm	B mm	Weight g	Price €
K650499							15	7.5	65,00
K650498							20	20	72,00

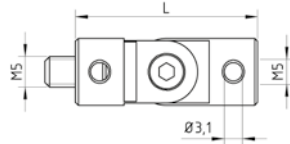
Screw for cube stainless steel



Part No.	S mm	L mm	ML mm	ML1 mm	D mm	DS mm	DS1 mm	Weight g	Price €
K650070		21						3.65	6,00
K650041		26						4.04	9,00

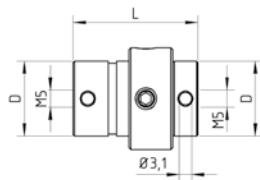
STYLI M5

Joint titanium



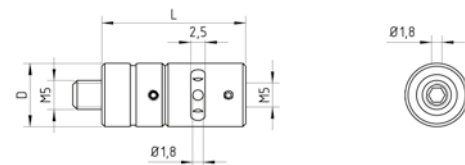
Part No.	S mm	L mm	ML mm	ML1 mm	D mm	DS mm	DS1 mm	Weight g	Price €
K650054		30			11			10.88	100,00
K650053		36			18			36.49	109,00

Swivel piece titanium



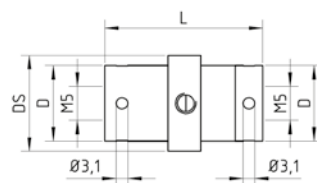
Part No.	S mm	L mm	ML mm	ML1 mm	D mm	DS mm	DS1 mm	Weight g	Price €
K650049		30			18			43.39	127,00

Swivel piece piezo titanium



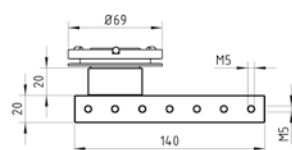
Part No.	S mm	L mm	ML mm	ML1 mm	D mm	DS mm	DS1 mm	Weight g	Price €
K650627		25			11			10.76	95,00
K650047		25			18			26.1	124,00

Swivel piece titanium - hardened steel patented



Part No.	S mm	L mm	ML mm	ML1 mm	D mm	DS mm	DS1 mm	Weight g	Price €
K650977		23			11	14		11.92	77,00
K650976		27			18	19.8		33.68	88,00

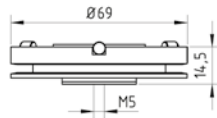
Multi-way stylus holder aluminium only for measuring probe head



Part No.	VPE	S mm	L mm	ML mm	ML1 mm	D mm	DS mm	DS1 mm	Weight g	Price €
K650497	1								357	450,00

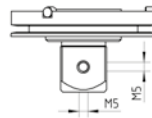
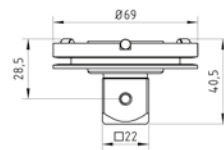
Styli M5

Adaptor plate with disk with cylinders



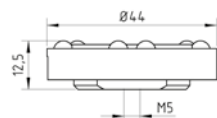
Part No.	VPE						Weight g	Price €
K650605	1					1 piece	166	248,00

Adaptor plate with cube (MT) with cylinders



Part No.	VPE						Weight g	Price €
K650628	1					1 piece	181	316,00
K650551	2					1 piece	181	615,00
K650140	10					1 piece	181	2999,00

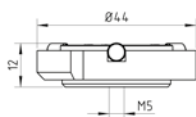
Adaptor plate switch.-system with balls



Part No.	VPE						Weight g	Price €
K650857	1					1 piece	72	206,00
K650552	2					1 piece	72	405,00
K650141	10					1 piece	72	1921,00

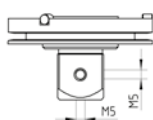
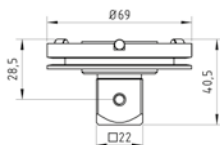
STYLI M5

Adaptor plate Prismo ST with cylinders



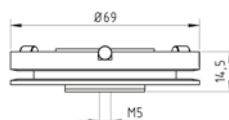
Part No.	VPE						Weight g	Price €
K650553	2					1 piece	67	423,00
K650655	10					1 piece	67	1911,00

Adaptor plate with cube Prismo Vast with cylinders with ID-chip



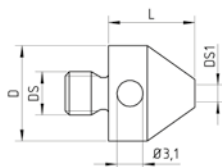
Part No.	VPE						Weight g	Price €
K650978	1					1 piece	158	264,00
K650979	2					1 piece	158	513,00
K650980	10					1 piece	158	2524,00

Adaptor plate with disk Prismo Vast with cylinders with ID-chip



Part No.	VPE						Weight g	Price €
K650610	1					1 piece	131	248,00
K650842	2					1 piece	131	482,00
K651277	10					1 piece	131	2354,00

Adaptor stainless steel

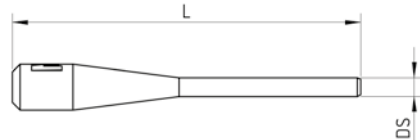


Part No.	S mm	L mm	ML mm	ML1 mm	D mm	DS mm	DS1 mm	Weight g	Price €
K650448		10			11	M5	M2	4.9	16,00
K650447		10			11	M5	M3	4.78	16,00
K650960		10			11	M5	M4	4.6	16,00

Accessories

Pin spanner

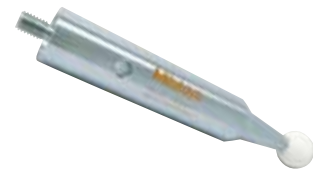
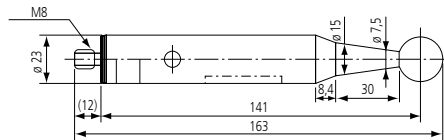
stainless steel or
hardened steel



Part No.	S mm	L mm	ML mm	ML1 mm	D mm	DS mm	DS1 mm	Weight g	Price €
K651223		23				1.2		0.51	7,00

Master ball

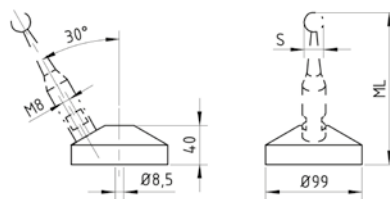
Base: Stainless Steel
Tip: Ruby (ø 10 mm)
Ceramic (ø 20 mm)



Part No.	S mm	L mm	Description	B mm	Weight g	Price €
06ABH830D	10		incl. factory certificate			279,00
06ABM941D	20		High Accuracy Master Ball (e.g. for LEGEX and FALCIO-Apex Series) Incl. Calibration Certificate from Swiss National Laboratory METAS			1800,00
06ABM944D	20		Standard Master Ball			165,00

Base plate for calibration sphere

stainless steel

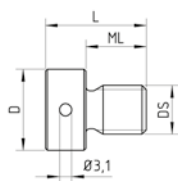


Part No.	S mm	ML mm		B mm	Weight g	Price €
K651222		141				197,00

ACCESSORIES

Thread insert

steel, hardened and ground



Part No.	S mm	L mm	ML mm	ML1 mm	D mm	DS mm	DS1 mm	Weight g	Price €
K650026		16	10		10	M4		3.75	57,00
K650025		16	10		10	M5		4.67	57,00
K650024		18	12		12	M6		7.04	57,00
K650023		20	12		15	M8		13.82	59,00
K650022		25	15		18	M10		25.91	59,00
K650057		25	15		20	M12		32.96	60,00

Pin spanner

stainless steel or
hardened steel



Part No.	S mm	L mm	ML mm	ML1 mm	D mm	DS mm	DS1 mm	Weight g	Price €
K650346		49			2.5	1.7		2.07	9,00
K650347		70			5	2.9		2.07	9,00

Analogous Article Index

Part No.	Page
K650022	49
K650023	
K650024	
K650025	
K650026	
K650041	44
K650047	45
K650049	
K650051	44
K650052	45
K650053	
K650054	49
K650057	
K650068	42
K650069	41
K650070	44
K650072	38
K650073	
K650074	
K650076	
K650078	
K650079	
K650080	
K650082	
K650083	
K650084	
K650085	
K650086	
K650087	
K650088	
K650089	
K650090	38
K650106	
K650107	41
K650111	
K650112	
K650113	42
K650114	
K650122	46
K650128	
K650140	41
K650141	
K650164	44
K650170	
K650301	44
K650302	

Part No.	Page
K650321	40
K650322	
K650323	
K650324	
K650325	
K650326	
K650327	
K650328	
K650329	
K650341	
K650342	
K650343	
K650344	
K650345	49
K650346	
K650347	41
K650356	
K650357	42
K650361	47
K650447	
K650448	21
K650449	44
K650497	
K650498	46
K650499	
K650551	47
K650552	
K650553	41
K650555	
K650605	46
K650610	
K650627	45
K650628	
K650646	40
K650647	
K650648	
K650649	
K650650	
K650651	
K650652	
K650653	47
K650655	
K650658	40
K650659	
K650660	
K650661	

Part No.	Page
K650685	39
K650686	
K650687	38
K650688	38
K650689	
K650691	47
K650692	
K650693	46
K650842	
K650857	14
K650866	
K650960	45
K650976	
K650977	47
K650978	
K650979	11
K650980	
K650986	15
K651003	
K651004	
K651005	
K651006	
K651007	
K651008	
K651009	
K651010	
K651011	15
K651012	
K651013	16
K651014	
K651015	
K651016	
K651017	
K651018	
K651019	
K651020	
K651021	
K651022	
K651023	
K651024	
K651025	
K651026	

Part No.	Page
K651030	17
K651031	
K651032	
K651033	
K651034	
K651035	
K651036	24
K651037	
K651038	
K651039	
K651040	24
K651041	
K651042	
K651043	
K651044	20
K651045	
K651046	
K651047	21
K651052	
K651053	19
K651054	
K651055	20
K651056	
K651057	19
K651058	
K651059	
K651060	18
K651061	
K651062	
K651063	
K651064	
K651065	
K651066	
K651067	
K651068	
K651069	
K651070	
K651071	
K651072	
K651073	
K651074	
K651075	
K651076	
K651077	
K651078	
K651079	
K651080	

Part No.	Page
K651081	22
K651082	
K651083	
K651084	
K651085	
K651086	
K651087	

ARTICLE INDEX

Part No.	Page
K651095	21
K651096	
K651097	
K651098	
K651100	23
K651101	
K651102	27
K651103	
K651104	
K651105	
K651106	
K651107	26
K651108	
K651109	
K651110	
K651111	
K651112	
K651113	
K651114	
K651115	
K651116	
K651117	
K651118	
K651119	
K651120	
K651121	
K651122	
K651123	
K651124	
K651125	
K651126	
K651127	
K651128	
K651129	
K651130	
K651131	
K651132	
K651133	
K651134	
K651135	27
K651136	
K651137	
K651138	
K651139	
K651140	
K651141	27
K651142	
K651143	
K651144	
K651145	

Part No.	Page
K651146	28
K651147	
K651148	
K651149	
K651150	
K651151	
K651152	29
K651153	
K651154	
K651155	32
K651156	
K651157	
K651158	
K651159	
K651160	29
K651161	
K651162	
K651163	
K651164	
K651165	31
K651166	
K651167	
K651168	30
K651169	
K651170	
K651171	
K651172	30
K651180	
K651182	
K651184	34
K651185	
K651186	
K651187	
K651188	34
K651189	
K651190	
K651191	
K651192	
K651193	
K651194	
K651199	35
K651200	
K651201	
K651202	
K651203	
K651204	
K651205	
K651206	
K651207	

Part No.	Page
K651208	36
K651209	
K651212	
K651213	
K651214	
K651215	
K651216	48
K651222	
K651223	
K651231	15
K651232	
K651233	
K651234	
K651235	14
K651236	
K651237	
K651238	
K651239	
K651240	
K651241	
K651242	
K651243	
K651244	
K651245	
K651246	
K651247	
K651248	
K651249	
K651250	14
K651251	
K651252	
K651253	
K651254	
K651255	
K651256	
K651257	
K651258	
K651259	
K651260	
K651261	
K651262	
K651263	
K651264	
K651265	
K651266	
K651267	
K651268	
K651269	
K651270	

Part No.	Page
K651276	15
K651277	47
K651297	28
K651298	
K651299	
K651300	27
K651301	
K651302	28
K651303	
K651304	27
K651305	
K651306	
K651307	
K651308	28
K651309	
K651318	
K651319	11
K651320	
K651321	34
K651322	14
K651323	
K651324	16
K651325	15
K651326	16
K651327	15
K651328	
K651329	26
K651330	
K651331	
K651332	
K651333	27
K651334	
K651354	9
K651376	8
K651377	8
K651378	9
K651379	10
K651380	12
K651382	8
K651383	12
K656000	39
K656001	
K656002	
K656003	
K656004	
K656005	
K656006	
K656007	

Analogous Article Index

Part No.	Page	
K656008	39	
K656009		
K656010		
K656011		
K656013		
K656014		
K656015		
K656016		
K656018		
K656020		
K656022		
K656023		43
K656024		
K656025		
K656026		
K656027		
K656028		
K656029		
K656030		
K656031		
K656032		
K656033		
K656034		
K656035		
K656036		
K656037		
K656038		
K656039		
K656040		
K656041		
K656042		
K656043		
K656044		
K656045		
K656046		
K656047		
K656048		
K656049		
K656050		
K656090	39	

Part No.	Analog Renishaw	Page
K651033	A-5000-0073	17
K651036	A-5000-0074	
K651146	A-5000-3551	28
K651147	A-5000-3552	
K651148	A-5000-3553	
K651151	A-5000-3554	
K651019	A-5000-3603	16
K651016	A-5000-3604	
K651055	A-5000-3609	21
K651085	A-5000-3611	22
K651081	A-5000-3613	
K651172	A-5000-3615	30
K651058	A-5000-3627	19
K651054	A-5000-3626	20
K651017	A-5000-4154	16
K651018	A-5000-4155	
K651024	A-5000-4156	
K651025	A-5000-4158	
K651021	A-5000-4160	
K651022	A-5000-4161	22
K651082	A-5000-4187	34
K651185	A-5000-7553	
K651192	A-5000-7521	
K651193	A-5000-7522	23
K651100	A-5000-7534	
K651186	A-5000-7545	24
K651187	A-5000-7547	
K651194	A-5000-7549	
K651188	A-5000-7551	
K651189	A-5000-7553	
K651190	A-5000-7555	
K651191	A-5000-7557	
K651149	A-5000-7606	28
K651169	A-5000-7610	30
K651180	A-5000-7616	30
K651053	A-5000-7629	20
K651150	A-5000-7630	28
K651111	A-5000-7632	26
K651152	A-5000-7648	28
K651205	A-5000-7727	35
K651214	A-5000-7751	36
K651215	A-5000-7752	
K651216	A-5000-7753	36
K651203	A-5000-7754	35
K651204	A-5000-7755	
K651206	A-5000-7792	
K651182	A-5000-7795	34
K651184	A-5000-7796	

Part No.	Analog Renishaw	Page
K651233	A-5000-7800	15
K651236	A-5000-7801	14
K651013	A-5000-7802	16
K651015	A-5000-7803	
K651020	A-5000-7804	
K651276	A-5000-7805	15
K651012	A-5000-7806	16
K651014	A-5000-7807	
K651248	A-5000-7808	14
K651083	A-5000-7809	22
K651084	A-5000-7810	
K651052	A-5000-7811	20
K651032	A-5000-7812	17
K651098	A-5000-7813	23
K651056	A-5000-8395	19
K651256	A-5000-8663	14
K651034	A-5000-8876	17
K651035	A-5000-8877	
K651101	A-5000-9902	23
K651249	A-5003-0033	14
K651250	A-5003-0034	
K651257	A-5003-0035	
K651258	A-5003-0036	
K651263	A-5003-0037	
K651259	A-5003-0038	
K651264	A-5003-0039	
K651260	A-5003-0040	
K651265	A-5003-0041	
K651268	A-5003-0042	
K651261	A-5003-0043	
K651266	A-5003-0044	
K651269	A-5003-0045	
K651254	A-5003-0046	
K651262	A-5003-0047	
K651267	A-5003-0048	
K651270	A-5003-0049	26
K651112	A-5003-0050	
K651119	A-5003-0051	
K651120	A-5003-0052	
K651127	A-5003-0053	26
K651114	A-5003-0054	
K651121	A-5003-0055	
K651128	A-5003-0056	
K651122	A-5003-0057	
K651129	A-5003-0058	
K651132	A-5003-0059	
K651130	A-5003-0060	
K651133	A-5003-0061	
K651131	A-5003-0062	
K651134	A-5003-0063	

Part No.	Analog Renishaw	Page	
K651009	A-5003-0064	15	
K651010	A-5003-0065		
K651011	A-5003-0066		
K651143	A-5003-0067	27	
K651144	A-5003-0068		
K651145	A-5003-0069	24	
K651044	A-5003-0070		
K651045	A-5003-0071		
K651046	A-5003-0072	32	
K651162	A-5003-0075		
K651163	A-5003-0076	31	
K651164	A-5003-0077		
K651321	A-5003-0233	34	
K651068	A-5003-0805	18	
K651069	A-5003-0806		
K651070	A-5003-0807		
K651071	A-5003-0808		
K651072	A-5003-0809		
K651074	A-5003-0810		
K651075	A-5003-0811		
K651076	A-5003-0812		
K651077	A-5003-0813		
K651078	A-5003-0814		
K651079	A-5003-0815		
K650341	A-5003-0839		
K650343	A-5003-0840		
K650302	A-5003-0844		44
K650499	A-5003-0854		
K650498	A-5003-0856		
K651253	A-5003-0938		14
K651016	A-5003-3604		16
K651306	A-5003-4860	28	
K651307	A-5003-4861		
K651308	A-5003-4862		
K651309	A-5003-4863		
K651297	A-5003-5970		
K651298	A-5003-5971		
K651299	A-5003-5972		
K651300	A-5003-5973		
K651303	A-5003-5974		
K651302	A-5003-5975		
K651305	A-5003-5976		
K651301	A-5003-5977	27	
K651304	A-5003-5978		

ARTICLE INDEX

Part No.	Analog Renishaw	Page
K656031	A-5555-0424	43
K656030	A-5555-0425	
K656046	A-5555-0427	
K656037	A-5555-0620	
K656040	A-5555-0621	
K656026	A-5555-0623	
K656035	A-5555-0642	
K656023	A-5555-0647	
K656024	A-5555-0648	
K656025	A-5555-0649	
K656027	A-5555-0650	
K656028	A-5555-0651	
K656029	A-5555-0652	
K656032	A-5555-0653	
K656033	A-5555-0654	
K656034	A-5555-0655	
K656036	A-5555-0656	
K656038	A-5555-0657	
K656039	A-5555-0658	
K656041	A-5555-0659	
K656042	A-5555-0660	
K656043	A-5555-0661	
K656044	A-5555-0662	
K656045	A-5555-0663	
K656047	A-5555-0664	
K656048	A-5555-0665	
K656049	A-5555-0667	
K656050	A-5555-0668	
K651223	M-5000-3540	48
K651157	M-5000-3592	32
K651159	M-5000-3593	
K651038	M-5000-3647	24
K651039	M-5000-3648	24
K651097	M-5000-4150	21
K651030	M-5000-4152	17
K651031	M-5000-4153	
K651040	M-5000-4162	24
K651170	M-5000-4163	30
K651062	M-5000-4164	19
K651207	M-5000-6622	37
K651209	M-5000-6625	36
K651208	M-5000-6714	
K651199	M-5000-7583	35
K651200	M-5000-7584	
K651201	M-5000-7585	
K651202	M-5000-7586	
K651156	M-5000-7633	
K651037	M-5000-7634	24
K651041	M-5000-7779	

Part No.	Analog Zeiss	Page
K650170	000000-1165-629	41
K650069	600331-8093-000	
K650041	600341-0220-000	44
K650070	600341-0221-000	
K650341	600341-0250-000	
K650342	600341-0251-000	
K650343	600341-0252-000	
K650344	600341-0254-000	
K650345	600341-0256-000	
K650301	600341-0258-000	
K650302	600341-0260-000	
K650051	600341-8002-000	
K650357	600341-8090-000	
K650356	600341-8095-000	42
K650361	600341-8160-000	45
K650047	600341-8356-000	44
K650052	600341-8361-000	42
K650128	600341-8367-000	18
K651068	600341-8450-000	
K651069	600341-8451-000	
K651070	600341-8452-000	
K651071	600341-8453-000	
K651072	600341-8454-000	
K651073	600341-8500-000	
K651074	600341-8501-000	
K651075	600341-8502-000	
K651076	600341-8503-000	
K651080	600341-8510-000	42
K650122	600342-8368-000	
K650089	600342-8020-000	38
K650080	600342-8021-000	
K650086	600342-8022-000	
K650078	600342-8023-000	
K650107	600342-8024-000	
K650088	600342-8025-000	
K650083	600342-8026-000	
K650082	600342-8027-000	
K650076	600342-8028-000	
K650079	600342-8029-000	
K650068	600342-8051-000	42
K650497	600342-8060-000	45
K650324	600342-8200-000	41
K650323	600342-8201-000	
K650322	600342-8202-000	
K650321	600342-8203-000	
K650329	600342-8250-000	40

Part No.	Analog Zeiss	Page	
K650328	600342-8251-000	40	
K650327	600342-8252-000		
K650326	600342-8253-000		
K650325	600342-8254-000	45	
K650054	600342-9002-000		
K650053	600342-9003-000	46	
K650857	600660-8240-000		
K650141	600660-8250-000		
K650552	600660-8251-000		
K650551	600665-8573-000	47	
K650605	600665-9112-000		
K650978	600667-9601-000	58	
K650979	600667-9611-000		
K651223	602030-0001-000	49	
K650026	602030-0012-000		
K650025	602030-0013-000		
K650024	602030-0014-000		
K650023	602030-0015-000		
K650022	602030-0016-000		
K650057	602030-0017-000		
K650346	602030-0027-000		
K650448	602030-0215-000		47
K650347	602030-0222-000		49
K650447	602030-0315-000	47	
K650960	602030-0318-000		
K651239	602030-8001-000	14	
K651118	602030-8119-000	26	
K651107	602030-8120-000		
K651106	602030-8121-000	27	
K651087	602030-8201-000	22	
K651086	602030-8202-000		
K651156	602030-8301-000	32	
K651157	602030-8302-000		
K651158	602030-8303-000		
K651160	602030-8304-000	24	
K651161	602030-8305-000		
K651037	602030-8321-000		
K651038	602030-8322-000		
K651039	602030-8323-000	30	
K651040	602030-8324-000		
K651041	602030-8325-000	21	
K651170	602030-8341-000		
K651095	602030-8342-000		
K651096	602030-8343-000	19	
K651061	602030-8345-000		
K650627	602030-8358-000	45	
K650498	602030-8362-000	44	
K650499	602030-8363-000		
K651058	602030-8381-000	19	

Part No.	Analog Zeiss	Page
K651168	602030-8382-000	29
K650090	602030-9010-000	38
K650087	602030-9011-000	
K650085	602030-9012-000	
K650084	602030-9013-000	
K650081	602030-9014-000	
K650074	602030-9015-000	
K650073	602030-9016-000	41
K650072	602030-9017-000	
K650106	602030-9018-000	
K650114	602030-9024-000	
K650113	602030-9025-000	
K650112	602030-9026-000	
K650111	602030-9027-000	
K650555	602030-9028-000	

Analogous Article Index

Part No.	Analog Zeiss	Page
K650049	602030-9095-000	45
K651100	602030-9101-000	23
K651180	602030-9102-000	30
K651060	602030-9103-000	20
K651059	602030-9104-000	
K651101	602030-9105-000	23
K650655	620660-8250-000	47
K650553	620660-8251-000	
K656023	626107-1040-100	43
K656024	626107-1050-100	
K656025	626107-1060-100	
K656026	626107-1070-100	
K656027	626107-1080-100	
K656028	626107-1090-100	
K656029	626107-1100-100	
K656030	626107-1120-100	
K656031	626107-1150-100	
K656032	626107-1180-100	
K656033	626107-1200-100	43
K656034	626107-1250-100	
K656035	626107-1300-100	
K656036	626107-1400-100	47
K650610	626107-2000-940	
K656037	626107-2040-100	43
K656038	626107-2050-100	
K656039	626107-2060-100	
K656040	626107-2080-100	
K656041	626107-2100-100	
K656042	626107-2120-100	
K656043	626107-2150-100	
K656044	626107-2180-100	
K656045	626107-2200-100	
K656046	626107-2250-100	
K656047	626107-2300-100	
K656048	626107-2400-100	
K656049	626107-2500-100	
K656050	626107-2600-100	

Part No.	Analog Zeiss	Page
K656001	626115-0300-033	41
K656003	626115-0300-058	
K656002	626115-0302-050	
K656000	626115-0303-025	
K656004	626115-0400-034	
K656005	626115-0401-064	
K656008	626115-0500-075	
K656006	626115-0501-050	
K656007	626115-0501-053	
K656014	626115-0800-075	
K656016	626115-0800-115	
K656015	626115-0801-100	

Mitutoyo - added value for you!

MACH-3A



CRYSTA-Apex S



SurfaceMeasure



SURFTTEST PROBE



Roundtest RA-2200



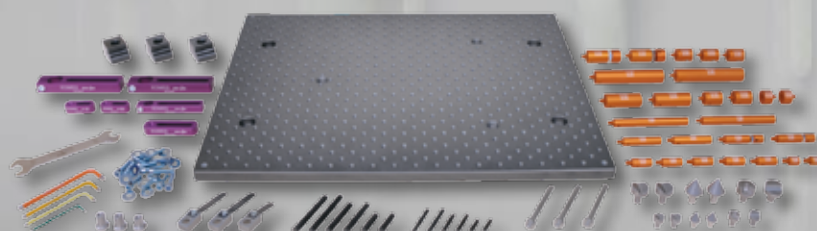
Surftest SJ410/SJ-500



Linear Height LH 600



Eco-Fix Kit L

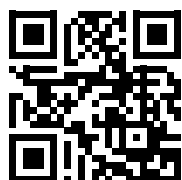




**Whatever your challenges are,
Mitutoyo supports you from start to finish.**

Mitutoyo is not only a manufacturer of top quality measuring products but one that also offers qualified support for the lifetime of the equipment, backed up by comprehensive services that ensure your staff can make the very best use of the investment.

Apart from the basics of calibration and repair, Mitutoyo offers product and metrology training, as well as IT support for the sophisticated software used in modern measuring technology. We can also design, build, test and deliver bespoke measuring solutions and even, if deemed cost-effective, take your critical measurement challenges in-house on a sub-contract basis.



**Find additional product literature
and our product catalogue**

www.mitutoyo.eu

Note: Product illustrations are without obligation. Product descriptions, in particular any and all technical specifications, are only binding when explicitly agreed upon.
MITUTOYO and MiCAT are either registered trademarks or trademarks of Mitutoyo Corp. in Japan and/or other countries/regions. Other product, company and brand names mentioned herein are for identification purposes only and may be the trademarks of their respective holders.

Mitutoyo

Mitutoyo Europe GmbH

Borsigstraße 8-10
41469 Neuss

Tel. +49 (0) 2137-102-0
Fax +49 (0) 2137-102-351

info@mitutoyo.eu
www.mitutoyo.eu