

KERN & SOHN –
The wide range of product champion
that is situated in the Swabian Alb



Printed in Germany by KERN & SOHN GmbH · z-cm-en-nn-20231

Discover the vast world of scales and
measuring technology from KERN online:
kern-sohn.com

Follow us also on our social media
channels



EN

KERN[®]

PROFESSIONAL MEASURING



MEDICAL SCALES

for clinics, doctors' surgeries, care facilities and vets

KERN Models A – Z

E	
EMB	58
EOB/EOE	60
EOS	61
F	
FH/FK	49
FOB-NL/FOB-NS	59
FOB-NLO	48
H	
HCB/HCN	57
M	
MAP	38
MBA	27
MBA-A01	05
MBC	06
MBD	63
MCB	22
MCC	24
MCD	44
MCN	34
MGC	64
MGD	65
MFB	66
MPB	39
MPC	12
MPD/-E	14
MPE/-E	8
MPI	42
MPK/MPL	40
MPN/-L	30
MPN-P/-H	28
MPS	10
MSB	05
MSC	05
MSF	05
MSW	37
MTA	20
MWA	16
MWB	43
MWN	32
MWS	18
MWS-L	18
N	
NFN	47
O	
OBE	51
OBL	52
OBN	53
OCM	54
ORA	55

■ Approved Medical Device
■ EC type approval

Images: page:
6 ©Iryna Inshyna/shutterstock.com, 8 ©Dragana Gordic/shutterstock.com, 10 ©Rido/shutterstock.com, 12 ©fikses/shutterstock.com,
14 ©Studio Romantic/shutterstock.com, 16 ©Vgstockstudio/shutterstock.com, 18 ©Ground Picture/shutterstock.com, 20 ©Photographie.eu/shutterstock.com,
22 ©Inside Creative House/shutterstock.com, 24 ©Halfpoint/shutterstock.com, 28 ©fikses/shutterstock.com, 30 ©Prostock-studio/shutterstock.com,
32 ©Inside Creative House/shutterstock.com, 34 ©Rido/shutterstock.com, 40 ©Kzenon/shutterstock.com, 44 ©michaeljung/shutterstock.com



KERN Pictograms

 Adjusting program CAL: For quick setting up of the balance's accuracy. External adjusting weight required	 ZERO: Resets the display to "0"	 Monocular Microscope: For the inspection with one eye
 Memory: Balance memory capacity, e.g. for article data, weighing data, tare weights, PLU etc.	 Hold function: When patients do not stand, sit or lie completely still, a stable weight is calculated using an average weight	 Binocular Microscope: For the inspection with both eyes
 Data interface RS-232: To connect the balance to a printer, PC or network	 Hold function: When the weighing conditions are unstable, a stable weight is calculated as an average value	 Trinocular Microscope: For the inspection with both eyes and the additional option for the connection of a camera
 RS-485 data interface: To connect the balance to a printer, PC or other peripherals. Suitable for data transfer over large distances. Network in bus topology is possible	 Protection against dust and water splashes IPxx: The type of protection is shown in the pictogram cf. DIN EN 60529:2000-09, IEC 60529:1989+A1:1999+A2:2013	 Abbe Condenser: With high numerical aperture for the concentration and the focusing of light
 Bluetooth* data interface: To transfer data from the balance to a printer, PC or other peripherals	 Suspended weighing: Load support with hook on the underside of the balance	 Halogen illumination: For pictures bright and rich in contrast
 WIFI data interface: To transfer data from the balance to a printer, PC or other peripherals	 Battery operation: Ready for battery operation. The battery type is specified for each device	 LED illumination: Cold, energy-saving and especially long-life illumination
 Control outputs (optocoupler, digital I/O): To connect relays, signal lamps, valves, etc.	 Rechargeable battery pack: Rechargeable set	 Fluorescence illumination for compound microscopes: With 100 W mercury lamp and filter
 Statistics: using the saved values, the device calculates statistical data, such as average value, standard deviation etc.	 Battery operation rechargeable: Prepared for a rechargeable battery operation	 Fluorescence illumination for compound microscopes: With 3 W LED illumination and filter
 PC Software: to transfer the measurements from the device to a PC	 Universal plug-in power supply: with universal input and optional input socket adapters for A) EU, CH B) EU, CH, GB, USA	 Phase contrast unit: For a higher contrast
 GLP/ISO log: With date and time. Only with KERN printers	 Plug-in power supply: 230V/50Hz in standard version for EU. On request GB, AUS or USA version available	 Darkfield condenser/unit: For a higher contrast due to indirect illumination
 KERN Communication Protocol (KCP): It is a standardized interface command set for KERN balances and other instruments, which allows retrieving and controlling all relevant parameters and functions of the device. KERN devices featuring KCP are thus easily integrated with computers, industrial controllers and other digital systems	 Integrated power supply unit: Integrated in balance. 230V/50Hz standard EU. More standards e.g. GB, AUS or USA on request	 Polarising unit: To polarise the light
 Piece counting: Reference quantities selectable. Display can be switched from piece to weight	 Weighing principle: Strain gauges Electrical resistor on an elastic deforming body	 Infinity system: Infinity corrected optical system
 Totalising level A: The weights of similar items can be added together and the total can be printed out	 Peak hold function: capturing a peak value within a measuring process	 Automatic temperature compensation: For measurements between 10 °C and 30 °C
 Weighing units: Can be switched to e.g. nonmetric units. Please refer to website for more details	 Push and Pull: the measuring device can capture tension and compression forces	 Verification possible: The time required for verification is specified in the pictogram
 Weighing with tolerance range (Check weighing) Upper and lower limiting can be programmed individually, e.g. for sorting and dosing. The process is supported by an audible or visual signal, see the relevant model	 Integrated scale: In the eyepiece	 Package shipment: The time required for internal shipping preparations is shown in days in the pictogram
	 360° rotatable microscope head	 Pallet shipment: The time required for internal shipping preparations is shown in days in the pictogram

*The Bluetooth® world mark and logos are registered trademarks owned by Bluetooth SIG, Inc. and any use of such marks by KERN & SOHN GmbH is under license. Other trademarks and trade names are those of their respective owners.

KERN – Your partner for Medical scales

Quality & Experience

We are absolutely committed to making products available to you which are of excellent built quality, are extremely robust, have a long service life and are easy to use, too. These three factors: quality, durability and ease of operation have been hallmarks of our products for over 175 years.

Conformity

Particularly in the medical environment, balances are subject to extensive standards and regulations, which serve to protect the users and patients. Over and above these standards, our certified quality management system, as well as our trained medical product advisers ensure rapid and competent product advice on all aspects of medical weighing technology.

Your advantages

fast

- 24 hour dispatch service for products in stock – order today, on its way tomorrow
- Sales & service hotline from 8:00 am to 5:00 pm

reliable

- 2+ years warranty
- Precision in weighing technology for more than 175 years

competent

- DAKkS accreditation
DIN EN ISO/IEC 17025
- Certified QM system
DIN EN ISO 9001
- Authorisation for initial verification by the manufacturer
2014/31/EU
- Medical certifications
DIN EN ISO 13485 and
93/42/EEC

versatile

- One-stop shopping: from height rod through to chair scale – everything from one supplier
- Quick as a flash, find the product you want with the “Balance Quick-Finder”

Promptness

The right product, at the right time, in the right place – that is our strength. With our sophisticated internal logistics system we make sure your order is ready for delivery within 24 hours (plus calibration/verification time if applicable). So you can react quickly to your customers' requirements and requests.

Professionalism and trust

On the subject of competent advice: Competence coupled with reliability – for centuries this has been the guiding principle of our company. This is why KERN sells its products exclusively through authorised dealers.

Albert Sauter, Managing Director
[Balingen, December 2022]

Other information

For balances with build-type approval for verification, which are delivered without verification, it is not possible to carry out the verification at a later date. Without verification, these balances are not medical products in accordance with 93/42/EEC and must therefore not be used in medical applications.

Earth's gravitational force



Electronic balances are subject to location regulations due to the earth's gravitational force. If location of use is changed, reverification and recalibration of the electronic balance is needed.

KERN –Measuring technology, microscopy and testing services from a single source

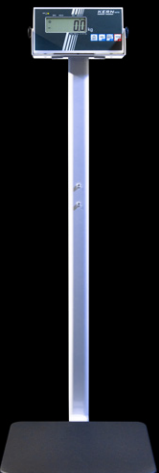
 MEDICAL SCALES 23	 BALANCES & TEST SERVICE 23	 MICROSCOPES & REFRACTOMETERS 23	 MEASURING TECHNOLOGY & TEST SERVICE 23	 KERN TEST SERVICE 23
Medical scales catalogue	Balances & Test service catalogue	Microscopes & refractometers catalogue	SAUTER measuring equipment catalogue	Test service brochure

Product group index 2023

APPROVED MEDICAL DEVICES 4-35

		KERN Premium Line 	26-35	
Height rods	5	Baby scales	27	
Baby scales	6/7	Personal floor scales	28-31	
Personal floor scales	8-15	Wheelchair platform scales	32/33	
Wheelchair platform scales	16/17	Chair scales	34/35	
Stretcher scales	18/19			
Handrail scales	20/21			
Chair scales	22-25			

PROFESSIONAL CARE 36-61

Tape for measuring circumference	37	Optical Instruments	50	
Digital hand grip dynamometer	38	Microscopes	51-54	
Personal floor scales	39-42	Refractometers	55	
Wheelchair platform scales	43			
Chair scales	44/45	Veterinary scales	56	
		Hanging scales	57	
Hospital need	46	Small pet scales	58/59	
Laundry cart scales	47	Veterinary scales	60/61	
Organ scales	48			
Dynamometers	49			

HOME CARE 62-66

Baby scales	63	
Personal floor scales	64-66	

Retailer information	67
----------------------	----

APPROVED MEDICAL DEVICES



KERN MBA

Medical personal scales are understood to be all non-automatic scales that are intended to be used to determine the body weight in medical applications (e.g. patient, baby and chair scales, verified according to class). These scales are regulated by European Directive 2014/31/EU.

Medical personal scales are also governed by the regulations for medical devices that are placed on the market in accordance with European Directive 93/42/EEC.

All models in the Approved Medical Devices category are balances which require verification and which can be used in medical applications.

Approved Medical Devices – Types of scales for medical applications that require mandatory verification:

This includes all balances which are used for determining body weight in medical applications. Determining weight is used for prognosis, diagnosis, prevention, monitoring, treatment or alleviation of illnesses.

Verified medical personal scales with a maximum resolution of 3000 digits are classified as Verification Class III (see type plate).

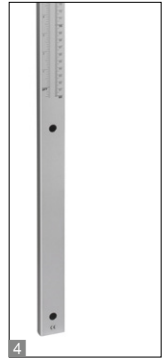
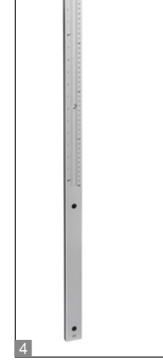
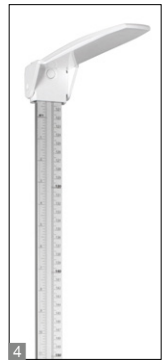
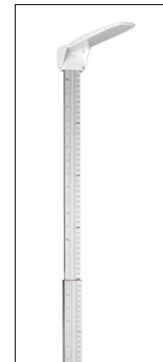
The requirements for re-verification are based on national regulations. In Germany, for example, this is the Verification Ordinance. The operator of the scale is obliged to ensure that the national requirements are met and that the conformity assessment markings remain intact.

KERN & SOHN GmbH does not accept responsibility for this.



KERN MPE-H

Height rods KERN MSB · MBA · MSC · MSF



When every centimetre counts – mechanical height rods approved as a medical device for professional use in medical diagnostics

MSB 80

- **1** Portable mechanical height rod
- Approved as a medical device according to 93/42/EEC
- For babies up to a maximum of 80 cm
- Large guide surfaces make handling easier (aligning, shifting, reading)
- Measuring scale begins with 0 on the right and left, so it can be used in both directions
- Height rod can be taken apart for compact storage

MBA-A01

- **2** Portable mechanical height rod
- Approved as a medical device according to 93/42/EEC
- For babies up to a maximum of 80 cm
- Robust construction
- Compact size
- Easy and hygienic cleaning
- Readability on scale with moveable stop
- Large guide surfaces make handling easier (aligning, shifting, reading)

MSC 100

- **3** Portable mechanical height rod
- Approved as a medical device according to 93/42/EEC
- For infants up to a maximum of 100 cm
- Readability on scale with moveable stop
- Sturdy aluminum profile
- Stop can be folded for compact storage

MSF 200

- **4** Mechanical height rod
- Approved as a medical device according to 93/42/EEC
- Readability on scale with moveable stop
- Readability on scale with moveable, foldable stop or mounting on KERN scales MPS-PM (see page 10), MPB-P (see page 39) or wall-mounted
- Sturdy aluminum profile

STANDARD



Model	Measuring range	Increments	Overall dimensions W×D×H	Net weight approx.
KERN	cm (inch)	mm (inch)	mm	kg
MSB 80	10 – 80	1	880×330×100	0,70
MBA-A01	30 – 80 (11½ – 31½)	1 (¼)	850×240×60	0,40
MSC 100	6,5 – 100 (2½ – 39¼)	1 (¼)	1020×290×50	0,70
MSF 200	60 – 205 (23½ – 78¾)	1 (¼)	53×40×1000	0,80



Baby scale KERN MBC · MBC-E

Elegantly-shaped baby scale – with EC type approval class III and approval for professional mobile or stationary medical use in medical diagnostics





Features

- Verification class III (verification is optional)
- Approved as a medical device according to 93/42/EEC
- Popular in paediatrics: the large tray, with its optimal ergonomic curvature, is ideal for the safe weighing of babies
- **1** Special function for neonatology centres: Difference function for calculating the weight gain before and after feeding
- Robust ABS plastic. Easy and hygienic cleaning
- Secure and non-slip positioning with rubber feet
- Hold function: When patients do not lie completely still, a stable weight is calculated using an average weight and this is then "frozen". This means that you have sufficient time to attend to the young patient first and then read the weight reading in peace
- KERN MBC: Protective working cover included with delivery
- KERN MBC-E: Identical in construction to the MBC but without mains adapter, at a particularly attractive price, especially suitable for mobile use, e.g. for midwives

Technical data

- Backlit LCD display, digit height 25 mm
- Dimensions of tray W×D×H 600×280×55 mm
- Overall dimensions W×D×H 320×410×70 mm
- Overall dimensions incl. optional height rod W×D×H 600×407×120 mm
- KERN MBC: Battery operation possible, 6×1.5 V AA not included, operating time up to 20 h
- KERN MBC-E: Batteries included, 6×1.5 V AA, operating time up to 20 h
- Net weight approx. 4,6 kg

Accessories

- **2** Mechanical height rod to fix to the scale, measuring range 10 cm–80 cm, increments of 1 mm, KERN MBC-A01
- **3** Foot/head rest to fix to the lying surface for even more safety when weighing small children, scope of delivery: 1 head rest and 1 foot rest, KERN MBC-A05
- **5** Carrying case for mobile use, only for models without height rod, KERN MBC-A02

- **4** Protective working cover over the display device, scope of delivery: 5 items, KERN MBC-A06S05
- Internal rechargeable battery pack, operating time up to 40 h without backlight, charging time approx. 12 h, only in combination with KERN YKA-44, KERN MBC-A08
- Cleaning cloths, alcohol-free cloths for disinfectant wiping, quick acting, based on modern quaternary ammonium compounds and effective against papova viruses. Particularly gentle on materials, and very well suited for disinfecting products which are sensitive to alcohol. Fulfill the legal requirements for occupational safety in accordance with TRGS 525/540. Packaging contents 100 pcs., size 20×22 cm per cloth, KERN MYC-01
- External mains adapter, 100 V – 240 V, Standard EU, CH, UK, KERN YKA-43
- External mains adapter, 100 V – 240 V, Standard EU, KERN YKA-44

STANDARD				OPTION		FACTORY
MBC				MBC-E		* ±3 DAYS

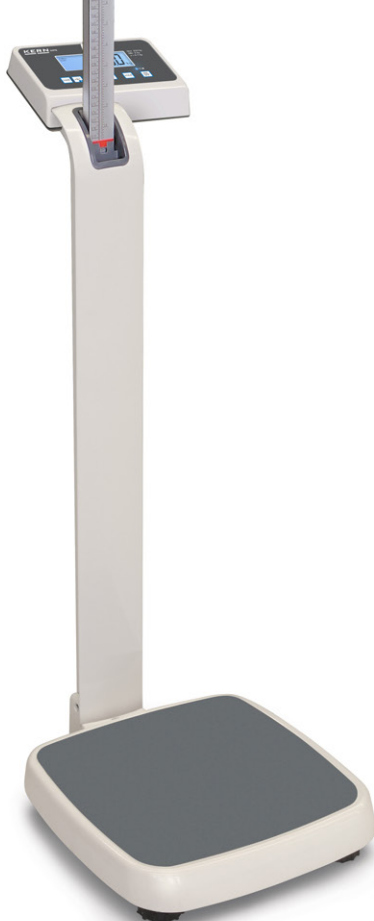
Model	Weighing capacity	Readability	Verification value	Mandatory by law
				Verification
	[Max] kg	[d] kg	[e] kg	 KERN
MBC 15K2DEM	6 15	0,002 0,005	0,002 0,005	965-128.
MBC 15K2DM	6 15	0,002 0,005	0,002 0,005	965-128.
MBC 20K10EM	20	0,01	0,01	965-128.
MBC 20K10M	20	0,01	0,01	965-128.

* Within the EU, official verification is mandatory by law for scales that are intended for use as a medical device. Please add this to your order. We require the location of use and the post code for the verification.



Personal floor scale KERN MPE · MPE-E

High quality personal floor scale with BMI function – with EC type approval and approval for professional medical use in medical diagnostics



KERN **MPE-H**
with stand and
height rod



KERN **MPE-P**
with stand



Features

- Verification class III (verification is optional)
- Approved as a medical device according to 93/42/EEC
- **1** Practical second display on the back of the scale, which makes it easy for both the patient and the doctor or nursing staff to read the weight
- **2** The MPE-H model has an elegant height rod integrated into the column, which can be pulled out for use and has a sturdy plastic head rest and a measuring range from 88-205 cm
- The ergonomically optimised shape and robust design mean that this range is ideal for daily use in a professional environment
- Secure and non-slip positioning with height-adjustable rubber feet
- Level indicator to level the balance precisely
- Large platform with non-slip and wear-resistant surface made of plastic, to provide a secure footing for patients
- Hold function: When patients do not stand completely still, a stable weight is calculated using an average weight and this is then “frozen”. This means that you have sufficient time to attend to the patient first and then take the weight reading in peace
- Mother and child function: the parent’s weight will be taken and then the scale will be reset to zero at the push of a button. Afterwards then the parent and baby can be weighed together. The weight of the child will now be shown on the display. This is particularly good for infants, as this way they can be cradled, safe and sound, in the arms of the parent while being weighed

- BMI function to determine underweight/normal weight/surplus weight
- High resolution readability: Readability [d] can be increased by one decimal place for 5 sec. by the touch of a key
- Data interface RS-232 as standard
- **3** Easy to transport thanks to the two integrated transport wheels
- Battery- or mains-powered, rechargeable battery operation optional
- Protective working cover included with delivery
- KERN MPE-E: Identical in construction to Kern MPE, however without mains adapter, only battery operation. With a particularly attractive price

Technical data

- Large backlit LCD display, digit height 25 mm
- Weighing plate dimensions W×D×H 365×360×80 mm
- Overall dimensions W×D×H
MPE-PM: 365×570×1030 mm
MPE-HM: 365×570×2134 mm, with extracted height rod
- Net weight approx. 12 kg

KERN MPE

- Battery operation possible, 6×1.5 V AA not included, operating time up to 20 h
- Mains adapter external, standard

KERN MPE-E

- Batteries included, 6×1.5 V AA, operating time up to 20 h

Accessories

- Protective working cover over the display device, scope of delivery: 5 items, KERN MPE-A01S05
- Cleaning cloths, alcohol-free cloths for disinfectant wiping, quick acting, based on modern quaternary ammonium compounds and effective against papova viruses. Particularly gentle on materials, and very well suited for disinfecting products which are sensitive to alcohol. Fulfill the legal requirements for occupational safety in accordance with TRGS 525/540. Packaging contents 100 pcs., size 20×22 cm per cloth, KERN MYC-01
- Internal rechargeable battery pack, operating time up to 40 h without backlight, charging time approx. 12 h, KERN MBC-A08
- External mains adapter, 100 V – 240 V, Standard EU, CH, UK, KERN YKA-43
- External mains adapter, 100 V – 240 V, Standard EU, KERN YKA-44
- Interface cable RS-232 to connect an external device, KERN CFS-A01
- Matrix needle printer, KERN YKN-01
- Universal label printer, KERN YKE-01
- Thermal printer, KERN YKB-01N
- For further details, plenty of further accessories and suitable printers, see Internet

STANDARD	OPTION	FACTORY
MPE	MPE-E	*

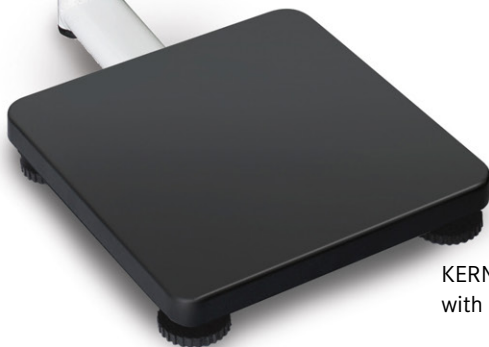
* Within the EU, official verification is mandatory by law for scales that are intended for use as a medical device. Please add this to your order. We require the location of use and the post code for the verification.

Model	Weighing capacity	Readability	Verification value	Mandatory by law
				Verification
	[Max] kg	[d] kg	[e] kg	
KERN MPE 200K-1PEM	250	0,1	0,1	965-129
MPE 250K100PM	250	0,1	0,1	965-129
MPE 200K-1HEM	250	0,1	0,1	965-129
MPE 250K100HM	250	0,1	0,1	965-129



Personal floor scale KERN MPS

Stylish personal floor scale with BMI function – with EC type approval and approval for professional medical use in medical diagnostics

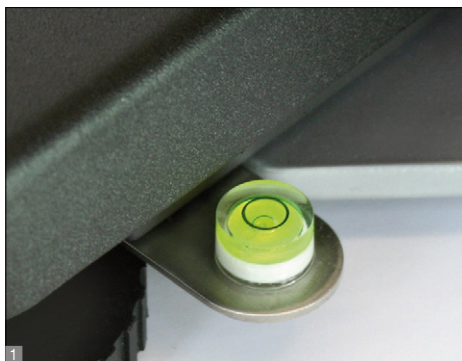


KERN MPS-PM
with stand



KERN MPS-M
with free-standing
display device

Personal floor scale KERN MPS



Features

- Verification class III (verification is optional)
- Approved as a medical device according to 93/42/EEC
- Thanks to its compact dimensions and the good price/performance ratio, this range is ideally suited for use in treatment rooms in doctor's surgeries and hospitals
- Ergonomic display device with large numerical keypad and high-contrast LCD display for easy entry and reading of patient data, such as, for example, the height for calculating the BMI
- Sturdy steel weighing plate with a non-slip and wear-resistant surface
- Easy and hygienic cleaning
- 1 Secure and non-slip positioning with height-adjustable rubber feet
- 1 Level indicator to level the balance precisely
- Hold function: When patients do not stand completely still, a stable weight is calculated using an average weight and this is then "frozen". This means that you have sufficient time to attend to the patient first and then take the weight reading in peace
- BMI function to determine underweight/normal weight/surplus weight
- 2 Wall mount for display device, standard
- Battery- or mains-powered, rechargeable battery operation optional
- Protective working cover included with delivery

Technical data

- LCD display, digit height 25 mm
- Weighing plate dimensions WxDxH 275x295x58 mm
- Dimensions of display device WxDxH 216x110x47 mm
- MPS-M: Cable length of display device approx. 1,21 m
- Overall dimensions WxDxH
MPS-M: 275x295x58 mm
MPS-PM: 275x445x1020 mm (incl. stand)
- Battery operation possible, 6x1.5 V AA not included, operating time up to 50 h
- Mains adapter external, standard
- Data interface RS-232 as standard
- Net weight
MPS-M: approx. 4,2 kg
MPS-PM: approx. 7 kg

Accessories

- 3 Mechanical height rod, measuring range: 60 cm – 205 cm, can be screwed onto the column from the front or the back (MPS-PM) or wall-mounted, approved as a medical device according to 93/42/EEC, KERN MSF 200
- Cleaning cloths, alcohol-free cloths for disinfectant wiping, quick acting, based on modern quaternary ammonium compounds and effective against papova viruses. Particularly gentle on materials, and very well suited for disinfecting products which are sensitive to alcohol. Fulfill the legal requirements for occupational safety in accordance with TRGS 525/540. Packaging contents 100 pcs., size 20x22 cm per cloth, KERN MYC-01
- Internal rechargeable battery pack, operating time up to 35 h without backlight, charging time approx. 14 h, KERN FOB-A08
- Interface cable RS-232 to connect an external device, KERN MPS-A08
- Matrix needle printer, KERN YKN-01
- Universal label printer, KERN YKE-01
- Thermal printer, KERN YKB-01N
- For further details, plenty of further accessories and suitable printers, see Internet

STANDARD					OPTION		FACTORY	
RS 232	MOVE	BATT	MULTI	1 DAY	ACCU	* +3 DAYS		

Model	Weighing capacity	Readability	Verification value	Mandatory by law Verification
	[Max] kg	[d] kg	[e] kg	
KERN MPS 200K 100M	200	0,1	0,1	965-129
KERN MPS 200K 100PM	200	0,1	0,1	965-129

* Within the EU, official verification is mandatory by law for scales that are intended for use as a medical device. Please add this to your order. We require the location of use and the post code for the verification.



Personal floor scale KERN MPC

Compact personal floor scale – with EC type approval and approval for professional medical use in medical diagnostics



KERN MPC 250K100M



Special obesity model
KERN MPC 300K-1LM



Features

- Verification class III (verification is optional)
- Approved as a medical device according to 93/42/EEC
- The bestseller for doctor's surgeries, chemists and hospitals
- Robust design for daily use in a professional environment
- Easy and hygienic cleaning
- Secure and non-slip positioning with height-adjustable rubber feet
- Level indicator to level the balance precisely
- KERN MPC 300K-1LM: Version with [Max] = 300 kg and larger weighing plate. Specially suitable for weighing overweight patients who are in the obese category
- **1** KERN MPC 300K-1LM: Sturdy handle for easy transportation of the scale
- **2** Flexible positioning of display device, e.g. free-standing or mounted to the wall. Wall mount for display device standard
- **3** Large platform with non-slip and wear-resistant surface made of plastic, to provide a secure footing for patients
- High resolution readability: Readability [d] can be increased by one decimal place for 5 sec. by the touch of a key
- BMI function to determine underweight/normal weight/surplus weight

- Hold function: When patients do not stand completely still, a stable weight is calculated using an average weight and this is then "frozen". This means that you have sufficient time to attend to the patient first and then take the weight reading in peace
- Mother and child function: the parent's weight will be taken and then the scale will be reset to zero at the push of a button. Afterwards then the parent and baby can be weighed together. The weight of the child will now be shown on the display. This is particularly good for infants, as this way they can be cradled, safe and sound, in the arms of the parent while being weighed
- GLP/ISO report, printout of weight value, BMI etc. with date and time. FLP/GMP-compliant print form in DE, EN, FR, only in combination with RS-232 interface cable KERN CFS-A01 + MPC-A01 and printer KERN YKB-01N
- Battery- or mains-powered, rechargeable battery operation optional
- Protective working cover included with delivery

Technical data

- Large backlit LCD display, digit height 25 mm
- Dimensions of display device WxDxH 200x130x60 mm
- Cable length of display device approx. 1,8 m
- Battery operation possible, 6x1.5 V AA not included, operating time up to 20 h
- Mains adapter external, standard

Accessories

- Protective working cover over the display device, scope of delivery: 5 items, KERN MBC-A06S05
- Cleaning cloths, alcohol-free cloths for disinfectant wiping, quick acting, based on modern quaternary ammonium compounds and effective against papova viruses. Particularly gentle on materials, and very well suited for disinfecting products which are sensitive to alcohol. Fulfill the legal requirements for occupational safety in accordance with TRGS 525/540. Packaging contents 100 pcs., size 20x22 cm per cloth, KERN MYC-01
- Internal rechargeable battery pack, operating time up to 40 h without backlight, charging time approx. 12 h, KERN MBC-A08
- External mains adapter, 100 V - 240 V, Standard EU, CH, UK, KERN YKA-43
- External mains adapter, 100 V - 240 V, Standard EU, KERN YKA-44
- RS-232 data interface, must be ordered at purchase, KERN MPC-A01
- Interface cable RS-232 to connect an external device, KERN CFS-A01

STANDARD					OPTION		FACTORY	

Model	Weighing capacity	Readability	Verification value	Weighing plate	Net weight approx.	Mandatory by law Verification
	[Max] kg	[d] kg	[e] kg	mm	kg	
KERN MPC 250K100M	250	0,1	0,1	365x370x80	9	965-129
KERN MPC 300K-1LM	300	0,1	0,1	400x500x120	10	965-129

* Within the EU, official verification is mandatory by law for scales that are intended for use as a medical device. Please add this to your order. We require the location of use and the post code for the verification.



Step-on personal floor scale KERN MPD · MPD-E

Professional step-on personal floor scale approved as a medical device and with EC type approval





Features

- Verification class III (verification is optional)
- Approved as a medical device according to 93/42/EEC
- **1** The bestseller for doctor's surgeries, chemists and hospitals: easy to use with no waste of time – simply tap on it, stand on it, read the weight
- Robust design for daily use in a professional environment
- Ergonomically optimised design
- Easy and hygienic cleaning
- Secure and non-slip positioning with height-adjustable rubber feet
- Level indicator to level the balance precisely
- **2** KERN MPD 200K-1EM: Identically to MPD 250K100M though without backlight and mains adapter, battery operation only, due to the reduced resolution higher display performance. Especially attractive in price
- **3** Large platform with non-slip and wear-resistant surface made of plastic, to provide a secure footing for patients
- KERN MPD: Battery- or mains-powered, rechargeable battery operation optional
- Protective working cover included with delivery

Technical data

- Weighing plate dimensions W×D×H 365×360×80 mm
- Dimensions of display device W×D×H 200×130×60 mm
- Overall dimensions W×D×H 365×490×120 mm
- Net weight approx. 9 kg

MPD 250K100M

- Large backlit LCD display, digit height 25 mm
- Battery operation possible, 6×1.5 V AA not included, operating time up to 20 h
- Mains adapter external, standard

MPD 200K-1EM

- Large LCD display, digit height 25 mm, without backlight
- Practical battery operation, batteries included, 6×1.5 V AA, operating time up to 20 h

Accessories

- Protective working cover over the display device, scope of delivery: 5 items, KERN MBC-A06S05
- **4** Cleaning cloths, alcohol-free cloths for disinfectant wiping, quick acting, based on modern quaternary ammonium compounds and effective against papova viruses. Particularly gentle on materials, and very well suited for disinfecting products which are sensitive to alcohol. Fulfill the legal requirements for occupational safety in accordance with TRGS 525/540. Packaging contents 100 pcs., size 20×22 cm per cloth, KERN MYC-01

Only MPD 250K100M:

- Internal rechargeable battery pack, operating time up to 40 h without backlight, charging time approx. 12 h, KERN MBC-A08
- External mains adapter, 100 V – 240 V, Standard EU, CH, UK, KERN YKA-43
- External mains adapter, 100 V – 240 V, Standard EU, KERN YKA-44

STANDARD	OPTION	FACTORY
BATT MULTI 1 DAY MPD	ACCU MPD	M +3 DAYS *

Model	Weighing capacity	Readability	Verification value	Mandatory by law Verification
KERN	[Max] kg	[d] kg	[e] kg	KERN
MPD 250K100M	250	0,1	0,1	965-129
MPD 200K-1EM	250	0,2	0,2	965-129

* Within the EU, official verification is mandatory by law for scales that are intended for use as a medical device. Please add this to your order. We require the location of use and the post code for the verification.

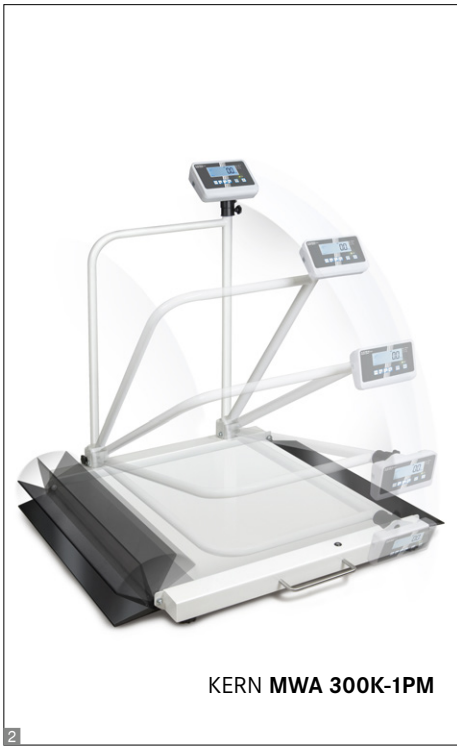


Wheelchair platform scale KERN MWA

Wheelchair platform scale with two integrated access ramps for easy access – with EC type approval and approval for professional medical use in medical diagnostics



4 ▲ KERN MWA 300K-1M + MWA-A04
 With the two practical handrails with the integrated, folding patient seat, you can convert the wheelchair platform scale into a multi-functional scale quickly and easily. This way patients can be weighed standing up, with support from the handrail or in a comfortable seated position. If you fold the patient seat up, then a wheelchair can be pushed or driven onto the scale. The strut rod included with delivery ensures a high level of stability and torsional rigidity. The drive-through protection which is also fitted as standard for the front wheels of the wheelchair gives an extra level of safety



3 KERN MWA-A02: Handrail, without column, cannot be folded, for self-assembly on the KERN MWA 300K-1M wheelchair platform scale or MWA 300K-1PM. With the two practical handrails with the integrated, folding patient seat, you can convert the KERN MWA 300K-1M wheelchair platform scale into a multi-functional scale quickly and easily. In this way patients can be weighed standing up, with support from the handrail or in a comfortable seated position

Features

- Verification class III (verification is optional)
- Approved as a medical device according to 93/42/EEC
- Especially suitable for weighing patients in wheelchairs because of the low-profile platform which can be approached from either side
- **1** The large steel weighing plate also makes it ideal for weighing obese patients
- Level indicator to level the balance precisely
- Hold function: When patients do not stand or sit completely still, a stable weight is calculated using an average weight and this is then “frozen”. This means that you have sufficient time to attend to the patient first and then take the weight reading in peace
- **2** KERN MWA 300K-1PM: Wheelchair platform scale with practical handrail incl. column for easy, ergonomic mounting of the display device. The handrail offers patients that extra level of safety when driving or stepping onto the weighing platform
- **2** Both access ramps and the handrail can be folded up quickly and easily, e.g. for transportation
- BMI function to determine underweight/normal weight/surplus weight
- Battery- or mains-powered, rechargeable battery operation optional

- High resolution readability: Readability [d] can be increased by one decimal place for 5 sec. by the touch of a key
- GLP/ISO report, printout of weight value, BMI etc. with date and time. FLP/GMP-compliant print form in DE, EN, FR, only in combination with RS-232 interface cable KERN CFS-A01 and printer KERN YKB-01N
- Protective working cover included with delivery

Technical data

- Large backlit LCD display, digit height 25 mm
- Dimensions of weighing surface WxD 880x840 mm
- Dimensions of display device WxDxH 200x130x60 mm
- Cable length of display device approx. 3 m
- Overall dimensions, without handrail, WxDxH 1180x1130x90 mm
- Battery operation possible, 6x1.5 V AA not included, operating time up to 20 h
- Mains adapter external, standard
- Net weight approx. 70 kg

Accessories

- Protective working cover over the display device, scope of delivery: 5 items, KERN MBC-A06S05

- Cleaning cloths, alcohol-free cloths for disinfectant wiping, quick acting, based on modern quaternary ammonium compounds and effective against papova viruses. Particularly gentle on materials, and very well suited for disinfecting products which are sensitive to alcohol. Fulfill the legal requirements for occupational safety in accordance with TRGS 525/540. Packaging contents 100 pcs., size 20x22 cm per cloth, KERN MYC-01
- Internal rechargeable battery pack, operating time up to 40 h without backlight, charging time approx. 12 h, KERN MBC-A08
- External mains adapter, 100 V - 240 V, Standard EU, CH, UK, KERN YKA-43
- External mains adapter, 100 V - 240 V, Standard EU, KERN YKA-44
- Interface cable RS-232 to connect an external device, KERN CFS-A01
- **3** Handrail, lacquered steel, dimensions WxDxH approx. 560x40x920 mm, scope of supply: handrail, fasteners, net weight approx. 4,0 kg, KERN MWA-A02
- **4** MWA 300K-1M: Handrail kit with folding patient seat, please add this to your order, retrofitting is not possible, KERN MWA-A04
- Matrix needle printer, KERN YKN-01
- Universal label printer, KERN YKE-01
- Thermal printer, KERN YKB-01N
- For further details, plenty of further accessories and suitable printers, see Internet

STANDARD

RS 232	GLP PRINTER	MOVE	IP 65	BATT	MULTI	2 DAYS
--------	-------------	------	-------	------	-------	--------

OPTION FACTORY

ACCU	M +3 DAYS
------	-----------

Model	Weighing capacity	Readability	Verification value	Weighing surface	Mandatory by law Verification
	[Max] kg	[d] kg	[e] kg	mm	M III KERN
KERN MWA 300K-1M	300	0,1	0,1	880x840	965-129
MWA 300K-1PM	300	0,1	0,1	880x840	965-129

* Within the EU, official verification is mandatory by law for scales that are intended for use as a medical device. Please add this to your order. We require the location of use and the post code for the verification.



Wheelchair platform scale KERN MWS Stretcher scale KERN MWS-L

Wheelchair platform scale and stretcher scale with low overall height for easy access – with EC type approval class III and approval for professional medical use in medical diagnostics



1 KERN MWS



2 KERN MWS-L



Features

- Verification class III (verification is optional)
- Approved as a medical device according to 93/42/EEC
- Especially suitable for weighing patients in wheelchairs, because the low-profile platform can be approached from either side and the memory function for tare weights for up to five (electric) wheelchairs
- **1** KERN MWS: Three balances in one: With the practical KERN MWS-A02 handrail set, the wheelchair platform scale KERN MWS 300K100M can be converted quickly and easily into a multi-function scale. In this way patients can be weighed standing up on their own, using the support of the handrail or in a wheelchair. For a more ergonomic system the display device can be fitted directly onto the handrail
- **2** KERN MWS-L: Due to its large dimensions and large weighing capacity, it is especially suitable for weighing immobile patients on stretchers or wheelchairs
- The large steel weighing plate also makes it ideal for weighing obese patients
- Secure and non-slip positioning with height-adjustable rubber feet
- Level indicator to level the balance precisely

- Hold function: When patients do not stand or sit completely still, a stable weight is calculated using an average weight and this is then “frozen”. This means that you have sufficient time to attend to the patient first and then take the weight reading in peace
- BMI function to determine underweight/normal weight/surplus weight
- The scale can be easily transported using the handle and two rollers and does not require much storage space
- Display device with two magnets on the back, ideal to fix it to metallic surfaces, e.g. to the weighing plate during transportation
- Battery- or mains-powered, rechargeable battery operation optional
- Protective working cover included with delivery

Technical data

- LCD display, digit height 25 mm
- Dimensions of display device W×D×H 210×110×50 mm
- Cable length of display device approx. 1,85 m
- Overall dimensions W×D×H
MWS 300K100M: 1150×849×73 mm
MWS 400K100DM: 1255×1060×69 mm
MWS 300K-1LM: 1500×860×68 mm
- Battery operation possible, 6×1.5 V AA not included, operating time up to 50 h
- Mains adapter external, standard

Accessories

- **1** Handrail set to fit to the wheelchair platform scale KERN MWS 300K100M, W×D×H approx. 60×1150×900 mm. Scope of delivery: two handrails, a stability bar, fasteners, Overall dimensions W×D×H 1155×830×65 mm (MWS 300K100M + MWS-A02), KERN MWS-A02
- Stand to elevate display device, height of stand approx. 950 mm, KERN MWS-A01
- Cleaning cloths, alcohol-free cloths for wipe disinfectant. Fulfill the legal requirements for occupational safety in accordance with TRGS 525/540. Packaging contents 100 pcs., size 20×22 cm per cloth, KERN MYC-01
- Internal rechargeable battery pack, operating time up to 45 h without backlight, charging time approx. 14 h, KERN FOB-A08
- Interface cable RS-232 to connect an external device, KERN MPS-A08
- Matrix needle printer, KERN YKN-01
- Universal label printer, KERN YKE-01
- Thermal printer, KERN YKB-01N
- For further details, plenty of further accessories and suitable printers, see Internet

STANDARD					OPTION	FACTORY
RS 232	MOVE	BATT	MULTI	2 DAYS	ACCU	M +3 DAYS

Model	Weighing capacity	Readability	Verification value	Weighing plate	Net weight approx.	Mandatory by law Verification
	[Max] kg	[d] kg	[e] kg	mm	kg	 KERN
KERN MWS 300K100M	300	0,1	0,1	910×740	30	965-129
MWS 400K100DM	300 400	0,1 0,2	0,1 0,2	1000×1000	44	965-130
MWS 300K-1LM	300	0,1	0,1	800×1200	42	965-129

* Within the EU, official verification is mandatory by law for scales that are intended for use as a medical device. Please add this to your order. We require the location of use and the post code for the verification.



Handrail scale KERN MTA

Sturdy handrail scale for a secure feeling during weighing – with EC type approval and approval for professional medical use in medical diagnostics





Features

- Verification class III (verification is optional)
- Approved as a medical device according to 93/42/EEC
- Ideal for care homes, centres for geriatric medicine, internal medicine and many more
- **1** The sturdy support structure helps fragile and weak patients to stand safely and, at the same time, allows a precise determination of the patients' weight
- Large surface, for the patient to have the most secure footing, hygienic and easy to clean
- Particularly easy access to the platform through its low height of just 30 mm
- Level indicator to level the balance precisely
- Hold function: When patients do not stand or sit completely still, a stable weight is calculated using an average weight and this is then "frozen". This means that you have sufficient time to attend to the patient first and then take the weight reading in peace
- **2** Practical second display on the back of the scale, which makes it easy for both the patient and the doctor or nursing staff to read the weight
- BMI function to determine underweight/normal weight/surplus weight
- Battery- or mains-powered, rechargeable battery operation optional
- Protective working cover included with delivery

Technical data

- Large backlit LCD display, Digit height 25 mm
- Dimensions of display device WxDxH 200x55x128 mm
- Dimensions weighing surface WxD 600x600 mm
- Weighing plate dimensions WxDxH 780x680x68 mm
- Overall dimensions WxDxH 780x680x1100 mm
- Optional battery operation, 6x1.5 V AA not included in scope of delivery, operating time up to 20 h
- Mains adapter external, standard
- Net weight approx. 42 kg

Accessories

- Protective working cover over the display device, scope of delivery: 5 items, KERN MPE-A01S05
- Cleaning cloths, alcohol-free cloths for disinfectant wiping, quick acting, based on modern quaternary ammonium compounds and effective against papova viruses. Particularly gentle on materials, and very well suited for disinfecting products which are sensitive to alcohol. Fulfill the legal requirements for occupational safety in accordance with TRGS 525/540. Packaging contents 100 pcs., size 20x22 cm per cloth, KERN MYC-01
- Internal rechargeable battery pack, operating time up to 40 h without backlight, charging time approx. 12 h, KERN MBC-A08
- External mains adapter, 100 V - 240 V, Standard EU, CH, UK, KERN YKA-43
- External mains adapter, 100 V - 240 V, Standard EU, KERN YKA-44
- Interface cable RS-232 to connect an external device, KERN CFS-A01
- Matrix needle printer, KERN YKN-01
- Universal label printer, KERN YKE-01
- Thermal printer, KERN YKB-01N
- For further details, plenty of further accessories and suitable printers, see Internet

STANDARD						OPTION		FACTORY	
RS 232	PRINTER	MOVE	BATT	MULTI	2 DAYS	ACCU	M	+3 DAYS	*

* Within the EU, official verification is mandatory by law for scales that are intended for use as a medical device. Please add this to your order. We require the location of use and the post code for the verification.

Model	Weighing capacity	Readability	Verification value	Mandatory by law Verification
KERN	[Max] kg	[d] kg	[e] kg	
MTA 400K-1M	300 400	0,1 0,2	0,1 0,2	965-130



Chair scale KERN MCB

Mobile chair scale with four steerable wheels – with EC type approval and approval for professional medical use in medical diagnostics



Chair scale KERN MCB



Features

- Verification class III (verification is optional)
- Approved as a medical device according to 93/42/EEC
- **1** Mobile version with particularly convenient locking brakes on all four wheels
- With its four wheels, this chair scale provides maximum mobility in bringing the scale to the patient. This ensures more efficient use of time for the clinic staff and greater safety for the patients who can be weighed in their familiar environment
- The four steerable rollers, with their large diameter, make it easier to get over door thresholds, edges and across the gaps into elevators
- This chair scale is the ideal measuring instrument for retirement homes, rehabilitation centres and clinics with lots of patients, and can weigh overweight people up to 300 kg
- For fragile patients, the comfortable, ergonomically optimised seat offers secure support during weighing
- **2** Two foldable armrests and footrests make transfers into the chair easier. Ideal for overweight patients or barrier-free use, e.g. for transfers from a bed to the scale
- Hold function: When patients do not sit completely still, a stable weight is calculated using an average weight and this is then "frozen". This means that you have sufficient time to attend to the patient first and then take the weight reading in peace

- BMI function to determine underweight/normal weight/surplus weight
- Ergonomic display device with large numerical keypad and high-contrast LCD display for easy entry and reading of patient data, such as, for example, the height for calculating the BMI
- Battery- or mains-powered, rechargeable battery operation optional
- Protective working cover included with delivery

Technical data

- **3** LCD display, digit height 25 mm
- Dimensions of display device WxDxH 210x110x50 mm
- Dimensions of seating surface WxD 380x360 mm
- Overall dimensions WxDxH 647x860x910 mm
- Battery operation possible, 6x1.5 V AA not included, operating time up to 50 h
- Mains adapter external, standard
- Net weight approx. 22 kg

Accessories

- Cleaning cloths, alcohol-free cloths for disinfectant wiping, quick acting, based on modern quaternary ammonium compounds and effective against papova viruses. Particularly gentle on materials, and very well suited for disinfecting products which are sensitive to alcohol. Fulfill the legal requirements for occupational safety in accordance with TRGS 525/540. Packaging contents 100 pcs., size 20x22 cm per cloth, KERN MYC-01
- Internal rechargeable battery pack, operating time up to 50 h without backlight, charging time approx. 14 h, KERN FOB-A08
- Interface cable RS-232 to connect an external device, KERN MPS-A08
- Matrix needle printer, KERN YKN-01
- Universal label printer, KERN YKE-01
- Thermal printer, KERN YKB-01N
- For further details, plenty of further accessories and suitable printers, see Internet

STANDARD	OPTION	FACTORY
RS 232 MOVE BATT MULTI 2 DAYS	ACCU	M +3 DAYS

Model	Weighing capacity	Readability	Verification value	Mandatory by law Verification
KERN	[Max] kg	[d] kg	[e] kg	KERN
MCB 300K100M	300	0,1	0,1	965-129

* Within the EU, official verification is mandatory by law for scales that are intended for use as a medical device. Please add this to your order. We require the location of use and the post code for the verification.



Chair scale KERN MCC

Ergonomically optimised chair scale
– with EC type approval and approval
for professional medical use in
medical diagnostics



Chair scale KERN MCC



Features

- Verification class III (verification is optional)
- Approved as a medical device according to 93/42/EEC
- This chair scale is the ideal measuring instrument for retirement homes, rehabilitation centres and clinics with lots of patients, and can weigh overweight people up to 250 kg
- **1** Mobile version with two steerable rollers and particularly convenient locking brakes at the rear
- With its four wheels, this chair scale provides maximum mobility in bringing the scale to the patient. This ensures more efficient use of time for the clinic staff and greater safety for the patients who can be weighed in their familiar environment
- The rollers, with their large diameter, make it easier to get over door thresholds, edges and across the gaps into elevators
- For fragile patients, the extra wide, comfortable, ergonomically-optimised seat offers safe, secure seating during weighing
- Because of the clearly contrasting black colour of the seating surface, footrests and armrests ideally suitable for dementia patients
- **2** Two foldable armrests and footrests make transfers into the chair easier. Ideal for overweight patients or barrier-free use, e.g. for transfers from a bed to the scale
- **3** Ergonomically positioned carrying handles

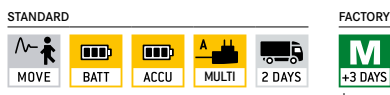
- Hold function: When patients do not sit completely still, a stable weight is calculated using an average weight and this is then “frozen”. This means that you have sufficient time to attend to the patient first and then take the weight reading in peace
- BMI function to determine underweight/normal weight/surplus weight
- High resolution readability: Readability [d] can be increased by one decimal place for 5 sec. by the touch of a key
- Protective working cover included with delivery

Technical data

- **3** Large backlit LCD display, digit height 25 mm
- Dimensions of display device WxDxH 200x130x60 mm
- Dimensions of seating surface WxD 390x360 mm
- Overall dimensions WxDxH 625x990x985 mm
- Rechargeable battery pack integrated, as standard, operating time up to 40 h without backlight, charging time approx. 12 h
- Battery operation possible, 6x1.5 V AA not included, operating time up to 20 h
- **4** External mains adapter as standard, with strain-relief and disconnecter plug to protect the power supply components
- Net weight approx. 24 kg

Accessories

- **5** Practical mains adapter pouch to store the mains adapter which is supplied as standard. Fitting option using two Velcro fasteners, KERN MCC-A01
- Protective working cover over the display device, scope of delivery: 5 items, KERN MBC-A06S05
- Cleaning cloths, alcohol-free cloths for disinfectant wiping, quick acting, based on modern quaternary ammonium compounds and effective against papova viruses. Particularly gentle on materials, and very well suited for disinfecting products which are sensitive to alcohol. Fulfill the legal requirements for occupational safety in accordance with TRGS 525/540. Packaging contents 100 pcs., size 20x22 cm per cloth, KERN MYC-01



Model	Weighing capacity	Readability	Verification value	Mandatory by law Verification
KERN	[Max] kg	[d] kg	[e] kg	M III KERN
MCC 250K100M	250	0,1	0,1	965-129

* Within the EU, official verification is mandatory by law for scales that are intended for use as a medical device. Please add this to your order. We require the location of use and the post code for the verification.

KERN Premium Line

Integratable (IoT-ready) balances with high-end performance

The capacity to integrate – the answer to the digitization requirements of today and in the future

→ Our KERN Premium Line models ensure that you are future-proofed, right now. Thanks to the built-in WiFi interface (factory option for KERN MBA), these models can be integrated into existing or future EMR and EHR systems and thus into the hospital networks.*

→ The KERN Universal Port (KUP) enables greater flexibility and individualisation in terms of interfaces such as, for example RS-232, USB, Bluetooth or Ethernet – available for all KERN Premium Line models, without any installation outlay.*

→ No manual data transfer thanks to the alibi memory as a factory option: Storing through the print key or remote control command: Date, time, alibi ID, weight (net, gross, tare). The data can be recalled through remote control commands or exported to Excel. Documentation or transfer errors are therefore eliminated and processes are accelerated.*

→ There are no additional costs at all, as you do not need software or a maintenance contract. Balances can be integrated by the users themselves.

→ A standardised concept of operation simplifies handling different products, as the menu structure is the same across all models.*

→ Thanks to the standard power supply, optional rechargeable battery pack (except for KERN MBA) or battery option, the user is not tied to a particular location.

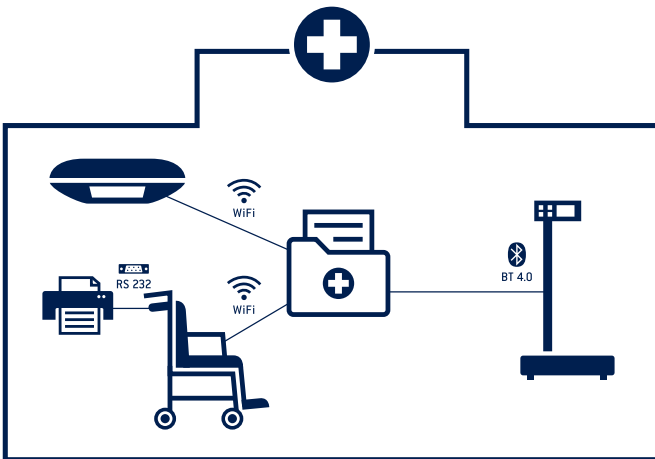
With KERN you are ready for the future of weighing in the Internet of Things. Get IOT ready – with the Premium Line models. Discover these products on the following pages.

Note: All KERN Premium Line models in this catalogue are marked with the IOT-ready symbol.

* the KERN MBA is not included



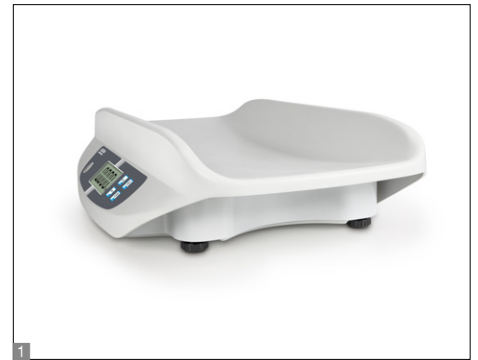
KERN MPN



The very best networking options in hospitals and care institutions with the IOT-ready models in the KERN Premium Line

Flexible application possibilities thanks to the optional rechargeable battery pack – battery can simply be inserted into the battery compartment





Compact baby scale with special Safe-Guard tray with EC type approval and approval for professional mobile or stationary medical use in medical diagnostics

Features

- Verification class III (verification is optional)
- Approved as a medical device according to 93/42/EEC
- Modern design
- **1** Safe-Guard tray: the special, particularly recessed tray with raised side bolsters offers optimum conditions for the safe weighing of babies
- Large, insensitive plastic tray, without corners and edges, therefore particularly hygienic and easy to clean
- Lightweight, compact design, therefore easy to transport and store
- Secure and non-slip positioning with height-adjustable rubber feet
- Easy to use
- Hold function: When patients do not lie completely still, a stable weight is calculated using an average weight and this is then "frozen". This means that you have sufficient time to attend to the young patient first and then read the weight reading in peace
- Integrated AUTO-OFF function to preserve the batteries

Technical data

- LCD display, digit height 25 mm
- Dimensions of tray W×D 600×260 mm
- Overall dimensions W×D×H 600×360×141 mm
- Batteries included, 6×1.5 V AA, operating time up to 20 h (up to 50 h without using WiFi)
- Net weight approx. 4,6 kg

Accessories

- **2** Mechanical height rod to fix to the scale, measuring range 30 cm–80 cm, increments of 0,1 cm, KERN MBA-A01
- WiFi data interface to transfer data from balances to PC or tablet, must be ordered at purchase, (Factory Option) KERN YMI-A01
- Cleaning cloths, alcohol-free cloths for disinfectant wiping, quick acting, based on modern quaternary ammonium compounds and effective against papova viruses. Particularly gentle on materials, and very well suited for disinfecting products which are sensitive to alcohol. Fulfill the legal requirements for occupational safety in accordance with TRGS 525/540. Packaging contents 100 pcs., size 20×22 cm per cloth, KERN MYC-01
- External mains adapter, 100 V – 240 V, Standard EU, CH, UK, KERN YKA-43

STANDARD				OPTION		FACTORY	
KCP PROTOCOL				230 V		M	

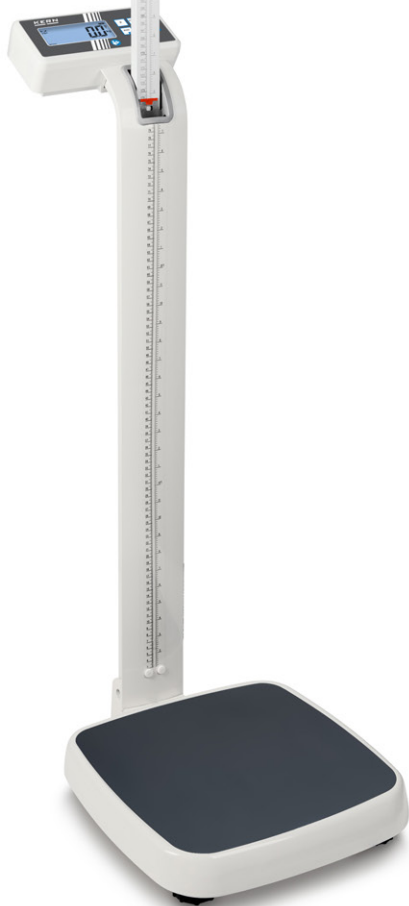
Model	Weighing capacity	Readability	Verification value	Mandatory by law Verification
KERN	[Max] kg	[d] kg	[e] kg	
MBA 10K-3M	15	0,005	0,005	965-128.

* Within the EU, official verification is mandatory by law for scales that are intended for use as a medical device. Please add this to your order. We require the location of use and the post code for the verification.



Personal floor scale KERN MPN-P · MPN-H

Integratable personal scales for wireless transfer of weighing data to EMR or EHR systems



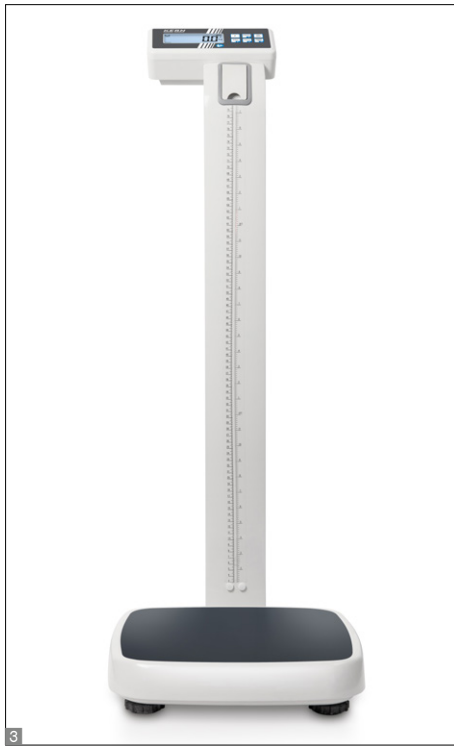
KERN **MPN-H**
with stand and
height rod



KERN **MPN-P**
with stand

NEW





Features

- Verification class III (verification is optional)
- Approved as a medical device according to 93/42/EEC
- Thanks to the integrated WiFi interface, this model is suited for wireless transfer of weights directly into the digital patient records, as soon as this is launched as a comprehensive service. By doing this, any documentation or transfer errors which occur during manual data transfer are eliminated. Thanks to this technology, this model can be integrated into existing or future EMR and EHR systems and ensures that your investment is future-proofed right now
- KERN Universal Port (KUP): permits the connection of an external KUP interface adapter, such as, for example, RS 232, USB, Bluetooth or Ethernet, for the exchange of data and control commands, without any installation outlay
- **1** Practical second display on the back of the scale, which makes it easy for both the patient and the doctor or nursing staff to read the weight
- **2** The MPN-HM model has an elegant height rod integrated into the column, which can be pulled out for use and has a sturdy plastic head rest and a measuring range from 89 – 205 cm
- **3** Patients with a height below 80 cm can be measured using the measuring scale fitted on the column

- The ergonomically optimised shape and robust design mean that this range is ideal for daily use in a professional environment
- Secure and non-slip positioning with height-adjustable rubber feet
- Large platform with non-slip and wear-resistant surface made of plastic, to provide a secure footing for patients
- Hold function: When patients do not stand completely still, a stable weight is calculated using an average weight and this is then “frozen”. This means that you have sufficient time to attend to the patient first and then take the weight reading in peace
- Mother and child function: the parent’s weight will be taken and then the scale will be reset to zero at the push of a button. Afterwards then the parent and baby can be weighed together. The weight of the child will now be shown on the display. This is particularly good for infants, as this way they can be cradled, safe and sound, in the arms of the parent while being weighed
- BMI function to determine underweight/normal weight/surplus weight
- High resolution readability: Readability [d] can be increased by one decimal place for 5 sec. by the touch of a key
- **5** Easy to transport thanks to the two integrated transport wheels
- **4** Battery- or mains-powered, rechargeable battery operation optional
- Protective working cover included with delivery

Technical data

- Large LCD display, digit height 25 mm
- Weighing plate dimensions W×D×H 365×360×80 mm
- Overall dimensions W×D×H MPN-PM: 365×570×1030 mm MPN-HM: 365×570×2134 mm, with extracted height rod
- Battery operation possible, 6×1.5 V AA not included, operating time up to 20 h
- Mains adapter external, standard
- Net weight approx. 12 kg

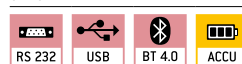
Accessories

- Internal rechargeable battery pack, operating time up to 48 h, charging time approx. 8 h, KERN YMR-01
- External data interface RS-232, Interface cable included, KERN YKUP-01
- External data interface USB, Interface cable included, KERN YKUP-03
- External mains adapter, 100 – 240 V, 50 – 60 Hz, Standard EU, UK, KERN YKA-51
- Bluetooth interface adapter, KERN YKUP-06
- Extension-Box, KERN YKUP-13
- Memory module with real time clock (alibi memory), KERN YMM-03

STANDARD



OPTION



FACTORY



Model	Weighing capacity	Readability	Verification value	Mandatory by law
				Verification
KERN	[Max] kg	[d] kg	[e] kg	KERN
MPN 200K-1PM	250	0,1	0,1	965-129
MPN 200K-1HM	250	0,1	0,1	965-129

* Within the EU, official verification is mandatory by law for scales that are intended for use as a medical device. Please add this to your order. We require the location of use and the post code for the verification.



Personal floor scale KERN MPN · MPN-L

Professional integratable personal scales for wireless transfer of weighing data to the EMR or EHR systems also for overweight patientes in the obese category



KERN MPN-M



KERN MPN-LM



Features

- Verification class III (verification is optional)
- Approved as a medical device according to 93/42/EEC
- Thanks to the integrated WiFi interface, this model is suited for wireless transfer of weights directly into the digital patient records, as soon as this is launched as a comprehensive service. By doing this, any documentation or transfer errors which occur during manual data transfer are eliminated. Thanks to this technology, this model can be integrated into existing or future EMR and EHR systems and ensures that your investment is future-proofed right now
- KERN Universal Port (KUP): permits the connection of an external KUP interface adapter, such as, for example, RS 232, USB, Bluetooth or Ethernet, for the exchange of data and control commands, without any installation outlay
- KERN MPN 300K-1LM: Version with [Max] = 300 kg and larger weighing plate. Specially suitable for weighing overweight patients who are in the obese category
- Ideally suited for hospitals, clinics and doctors' surgeries
- Robust design for daily use in a professional environment
- Easy and hygienic cleaning
- Secure and non-slip positioning with height-adjustable rubber feet

- **1** Level indicator to level the balance precisely
- KERN MPN 300K-1LM: Sturdy handle for easy transportation of the scale
- **2** Flexible positioning of display device, e.g. free-standing or mounted to the wall. Wall mount for display device standard
- Large platform with non-slip and wear-resistant surface made of plastic, to provide a secure footing for patients
- Hold function: When patients do not stand completely still, a stable weight is calculated using an average weight and this is then "frozen". This means that you have sufficient time to attend to the patient first and then take the weight reading in peace
- Mother and child function: the parent's weight will be taken and then the scale will be reset to zero at the push of a button. Afterwards then the parent and baby can be weighed together. The weight of the child will now be shown on the display. This is particularly good for infants, as this way they can be cradled, safe and sound, in the arms of the parent while being weighed
- BMI function to determine underweight/normal weight/surplus weight
- High resolution readability: Readability [d] can be increased by one decimal place for 5 sec. by the touch of a key
- Battery- or mains-powered, rechargeable battery operation optional
- Protective working cover included with delivery

Technical data

- Large LCD display, digit height 25 mm
- Weighing plate dimensions W×D×H
MPN: 365×370×80 mm
MPN-L: 400×500×120 mm
- Dimensions of display device W×D×H
210×54×100 mm
- Cable length of display device approx. 1,8 m
- Battery operation possible, 6×1.5 V AA not included, operating time up to 20 h
- Mains adapter external, standard
- Net weight approx. 12 kg

Accessories

- Internal rechargeable battery pack, operating time up to 48 h, charging time approx. 8 h, KERN YMR-01
- External data interface RS-232, Interface cable included, KERN YKUP-01
- External data interface USB, Interface cable included, KERN YKUP-03
- External mains adapter, 100 – 240 V, 50 – 60 Hz, Standard EU, UK, KERN YKA-51
- Bluetooth interface adapter, KERN YKUP-06
- Extension-Box, KERN YKUP-13
- Memory module with real time clock (alibi memory), KERN YMM-03

STANDARD

--	--	--	--	--	--	--	--

OPTION

--	--	--	--

FACTORY

--	--

* Within the EU, official verification is mandatory by law for scales that are intended for use as a medical device. Please add this to your order. We require the location of use and the post code for the verification.

Model	Weighing capacity	Readability	Verification value	Mandatory by law Verification
	[Max] kg	[d] kg	[e] kg	 KERN
KERN MPN 200K-1M	250	0,1	0,1	965-129
MPN 300K-1LM	300	0,1	0,1	965-129



Wheelchair platform scale KERN MWN

Robust integratable wheelchair platform scale for wireless transfer of weighing data to EMR or EHR systems



Wheelchair platform scale KERN MWN



Features

- Verification class III (verification is optional)
- Approved as a medical device according to 93/42/EEC
- Thanks to the integrated WiFi interface, this model is suited for wireless transfer of weights directly into the digital patient records, as soon as this is launched as a comprehensive service. By doing this, any documentation or transfer errors which occur during manual data transfer are eliminated. Thanks to this technology, this model can be integrated into existing or future EMR and EHR systems and ensures that your investment is future-proofed right now
- KERN Universal Port (KUP): permits the connection of an external KUP interface adapter, such as, for example, RS 232, USB, Bluetooth or Ethernet, for the exchange of data and control commands, without any installation outlay
- Especially suitable for weighing patients in wheelchairs because of the low-profile platform which can be approached from either side

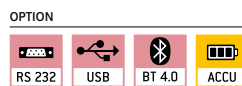
- Secure and non-slip positioning with height-adjustable rubber feet
- Level indicator to level the balance precisely
- Hold function: When patients do not stand or sit completely still, a stable weight is calculated using an average weight and this is then “frozen”. This means that you have sufficient time to attend to the patient first and then take the weight reading in peace
- BMI function to determine underweight/normal weight/surplus weight
- The scale can be easily transported using the handle and two rollers and does not require much storage space
- **1** Wall mount for display device, standard
- Battery- or mains-powered, rechargeable battery operation optional
- Protective working cover included with delivery

Technical data

- Large LCD display, digit height 25 mm
- Dimensions weighing surface W×D 910×740 mm
- Dimensions of display device W×D×H 210×54×100 mm
- Cable length of display device approx. 1,85 m
- Overall dimensions W×D×H 1150×849×73 mm
- Battery operation possible, 6×1.5 V AA not included, operating time up to 50 h
- Mains adapter external, standard
- Net weight approx. 30 kg

Accessories

- Internal rechargeable battery pack, operating time up to 48 h, charging time approx. 8 h, KERN YMR-01
- External data interface RS-232, Interface cable included, KERN YKUP-01
- External data interface USB, Interface cable included, KERN YKUP-03
- External mains adapter, 100 – 240 V, 50 – 60 Hz, Standard EU, UK, KERN YKA-51
- Bluetooth interface adapter, KERN YKUP-06
- Extension-Box, KERN YKUP-13
- Memory module with real time clock (alibi memory), KERN YMM-03



Model	Weighing capacity	Readability	Verification value	Mandatory by law Verification
KERN	[Max] kg	[d] kg	[e] kg	M III KERN
MWN 300K-1M	300	0,1	0,1	965-129

* Within the EU, official verification is mandatory by law for scales that are intended for use as a medical device. Please add this to your order. We require the location of use and the post code for the verification.



Chair scale KERN MCN

Mobile integratable chair scale for wireless transfer of weighing data to EMR or EHR systems



Chair scale KERN MCN



Features

- Verification class III (verification is optional)
- Approved as a medical device according to 93/42/EEC
- Thanks to the integrated WiFi interface, this model is suited for wireless transfer of weights directly into the digital patient records, as soon as this is launched as a comprehensive service. By doing this, any documentation or transfer errors which occur during manual data transfer are eliminated. Thanks to this technology, this model can be integrated into existing or future EMR and EHR systems and ensures that your investment is future-proofed right now
- KERN Universal Port (KUP): permits the connection of an external KUP interface adapter, such as, for example, RS 232, USB, Bluetooth or Ethernet, for the exchange of data and control commands, without any installation outlay
- This chair scale is the ideal measuring instrument for retirement homes, rehabilitation centres and clinics with lots of patients, and can weigh overweight people up to 250 kg
- **1** Mobile version with two steerable rollers and particularly convenient locking brakes at the rear
- With its four wheels, this chair scale provides maximum mobility in bringing the scale to the patient. This ensures more efficient use of time for the clinic staff and greater safety for the patients who can be weighed in their familiar environment

- The rollers, with their large diameter, make it easier to get over door thresholds, edges and across the gaps into elevators
- For fragile patients, the comfortable, ergonomically optimised seat offers secure support during weighing
- Because of the clearly contrasting black colour of the seating surface, footrests and armrests ideally suitable for dementia patients
- **2** Two foldable armrests and footrests make transfers into the chair easier. Ideal for overweight patients or barrier-free use, e.g. for transfers from a bed to the scale
- Ergonomically positioned carrying handles
- Hold function: When patients do not stand or sit completely still, a stable weight is calculated using an average weight and this is then "frozen". This means that you have sufficient time to attend to the patient first and then take the weight reading in peace
- BMI function to determine underweight/normal weight/surplus weight
- High resolution readability: Readability [d] can be increased by one decimal place for 5 sec. by the touch of a key
- Battery- or mains-powered, rechargeable battery operation optional
- Protective working cover included with delivery

Technical data

- **3** Large LCD display, digit height 25 mm
- Dimensions of seating surface WxD 390x360 mm
- Dimensions of display device WxDxH 210x54x100 mm
- Battery operation possible, 6x1.5 V AA not included, operating time up to 20 h
- **4** Mains adapter external, standard
- Net weight approx. 24 kg

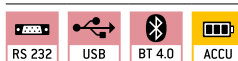
Accessories

- **5** Practical mains adapter pouch to store the mains adapter which is supplied as standard. Fitting option using two Velcro fasteners, KERN MCC-A01
- Internal rechargeable battery pack, operating time up to 48 h, charging time approx. 8 h, KERN YMR-01
- External data interface RS-232, Interface cable included, KERN YKUP-01
- External data interface USB, Interface cable included, KERN YKUP-03
- External data interface Ethernet, KERN YKUP-04
- External mains adapter, 100–240 V, 50–60 Hz, Standard EU, UK, KERN YKA-51
- Bluetooth interface adapter, KERN YKUP-06
- Extension-Box, KERN YKUP-13
- Memory module with real time clock (alibi memory), KERN YMM-03

STANDARD



OPTION



FACTORY



Model	Weighing capacity	Readability	Verification value	Mandatory by law Verification
KERN	[Max] kg	[d] kg	[e] kg	M III KERN
MCN 200K-1M	250	0,1	0,1	965-129

* Within the EU, official verification is mandatory by law for scales that are intended for use as a medical device. Please add this to your order. We require the location of use and the post code for the verification.

PROFESSIONAL CARE



KERN MAP

A **Professional Care balance** from KERN does not have approval in accordance with the Medical Device Directive and also does not have approval in accordance with the European Directive for non-automatic weighing instruments.

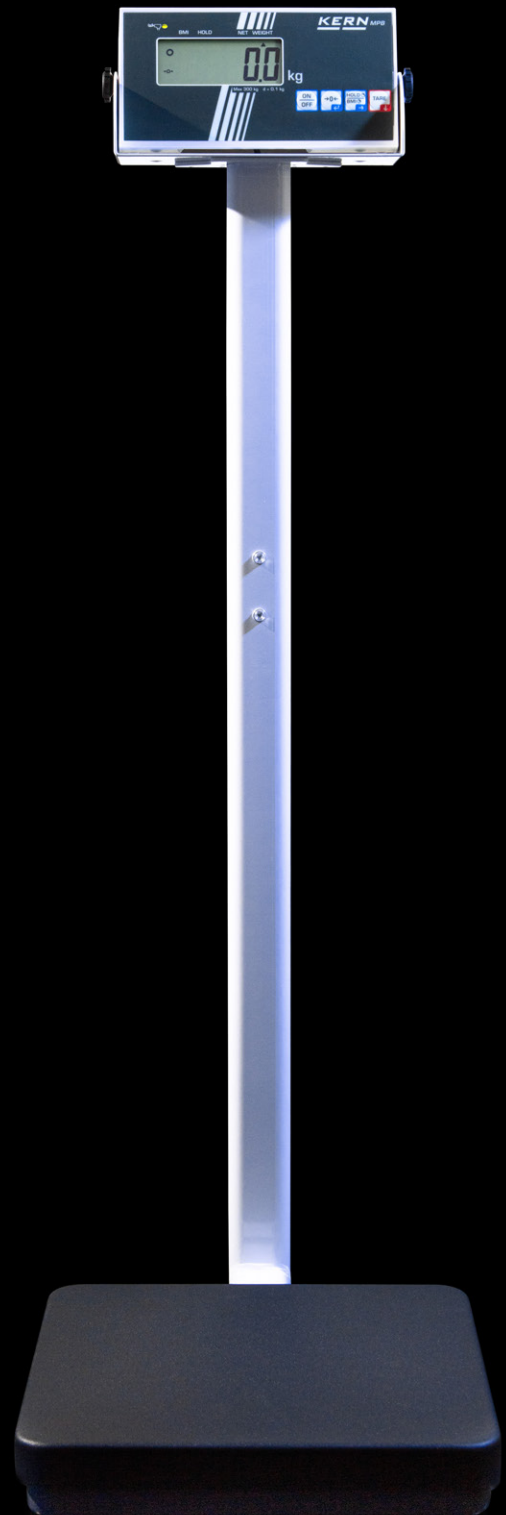
If the balance is not going to be used in medical applications, these approvals are not necessarily legally required. I.e. Professional Care balances are not verified and can also not be verified. This is a significant difference when compared with Approved Medical Device balances from KERN.

Professional Care products from KERN can be used anywhere, where the measurement is not used to determine medical actions. This applies, for example, to the areas of pathology, baby scales for midwives, personal scales and baby scales in pharmacies or weighing for self-monitoring, e.g. in sport studios.

A mandatory verification is not required for the following intended uses:

- Body weight scales in pathology (not a medical application according to § 7b Paragraph 2 No. 4 of the Verification Ordinance)
- Personal and baby scales (the latter can usually be borrowed in pharmacies)
- Baby scales for midwives
- Personal scales during blood collection for the preparation of blood products

(Information from: "Die Eichverwaltung informiert, Waagen in der Heilkunde" (Information from the Verification Office: Scales in medical applications) dated 19.04.2013)



KERN MPB



Convenient circumference measuring tape with practical pull-out mechanism

Features

- Continuous pull-out measuring tape for precise measurement e.g. around the body
- Ideal to determine the WHR (Waist-to-Hip-Ratio), which can give information about the distribution of the body's fat deposits using an indirect determination of abdominal fat
- With integrated feed mechanism
- The easiest handling:
 - Pull out the measuring tape
 - Hang it in the recess provided for this
 - Operate the feed mechanism
 - Read measurement value with millimetre precision
- Note: The models are only delivered in a set of 5 units. That means the price refers to a delivery of 5 units. Cannot be delivered individually

Technical data

- Measuring tape length 2,05 m (80 inch)
- Net weight approx. 0,25 kg

STANDARD



Model	Measuring range	Increments	Overall dimensions W×D×H	Net weight approx.
KERN	cm/inch	mm	mm	kg
MSW 200S05	205/80	1	55×90×20	0,25



Hand grip dynamometer, e.g. for rehabilitation treatment after accidents

Features

- Especially suitable for use in rehabilitation centres for determining manual clamping force
- There are four measuring methods, which for example, as part of a rehabilitation program, help the medical staff to monitor the fitness of the patient's hands and carry out controlled training:
 - Real time mode: immediately shows the client's current strength
 - Peak/Max mode: shows the maximum strength of a client's grip
 - Average mode: Calculates the average strength from two grips
 - Counting mode: Counts the number of presses which exceed a previously defined strength limit
- An ideal device to determine reduced handstrength and among others a possible mortality risk of elderly persons as well as a malnutrition in case of chemotherapy or similar treatments
- Safe, comfortable use thanks to non-slip rubber grips

- Integrated AUTO-OFF function after 1 minute to preserve the batteries
- Weight displayed in kg or lb
- MAP 80K1S: Special version for children: The small handle depth allows children in particular to easily and ergonomically grip the handles
- MAP 130K1: Special version for body builders: Its design and extended measuring range mean that it offers additional capacity, which can accommodate the higher fundamental force exerted by body builders
- **1** Exchangeable springs facilitate fast switching of the capacity (additional spring sets are included with delivery). The varying rigidity of the individual springs makes the hand grip dynamometer ideal for a wide variety of patient groups, e.g. children or senior citizens or in sports medicine
- **2** Stable case for safe, easy transport and for storage of the additional spring sets, standard, WxDxH 350x265x85 mm

Technical data

- LCD Graphic display, digit height 12 mm
- Batteries included, CR2450, operating time up to 53 h
- Net weight approx. 0,35 kg

STANDARD



OPTION



Model	Measuring range [Max] kg	Readability [d] g	Spring sets kg	Overall dimensions WxDxH mm	Net weight approx. kg	Option
						ISO Calibr. Certificate ISO KERN
KERN						
MAP 80K1S	80	100	10, 20, 40, 80	55x88x212	0,35	961-102K
MAP 80K1	80	100	20, 40, 80	55x102x212	0,35	961-102K
MAP 130K1	130	100	40,80,130	55x102x212	0,35	961-102K

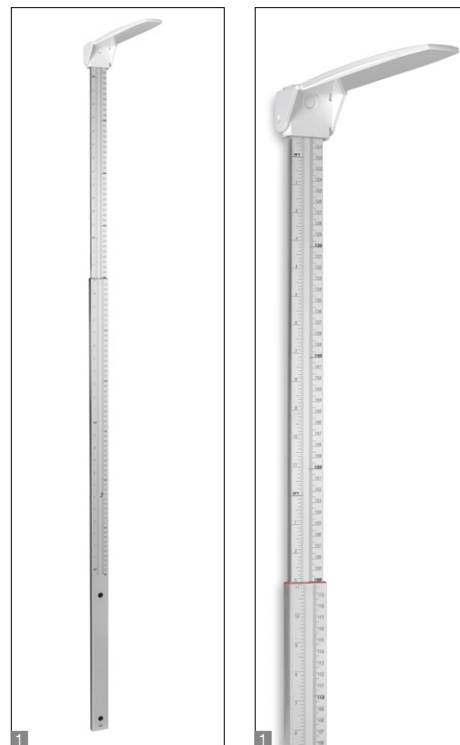
Personal floor scale KERN MPB



KERN MPB-P
with stand



KERN MPB
with free-standing
display device



Personal floor scale with BMI function

Features

- Sturdy steel weighing plate with a non-slip and wear-resistant surface
- Easy and hygienic cleaning
- Secure and non-slip positioning with rubber feet
- Hold function: When patients do not stand completely still, a stable weight is calculated using an average weight and this is then “frozen”. This means that you have sufficient time to attend to the patient first and then take the weight reading in peace
- Simple and convenient 4-key operation
- BMI function to determine underweight/normal weight/surplus weight
- Wall mount for the display device, as standard, only for models without a stand
- Battery- or mains-powered
- Protective working cover included with delivery

Technical data

- LCD display, digit height 25 mm
- Weighing plate dimensions W×D×H 315×300×60 mm
- Dimensions of display device W×D×H 210×110×50 mm
- MPB: Cable length of display device approx. 1,2 m
- Overall dimensions W×D×H
MPB: 315×300×60 mm
MPB-P: 315×450×1000 mm (incl. stand)
- Battery operation possible, 6×1.5 V AA not included, operating time up to 170 h
- Mains adapter external, standard

Accessories

- **1** Mechanical height rod, measuring range: 60 – 205 cm, can be screwed onto the column from the front or the back (MPB-P) or wall-mounted, approved as a medical device according to 93/42/EEC, KERN MSF 200
- Cleaning cloths, alcohol-free cloths for disinfectant wiping, quick acting, based on modern quaternary ammonium compounds and effective against papova viruses. Particularly gentle on materials, and very well suited for disinfecting products which are sensitive to alcohol. Fulfill the legal requirements for occupational safety in accordance with TRGS 525/540. Packaging contents 100 pcs., size 20×22 cm per cloth, KERN MYC-01

STANDARD

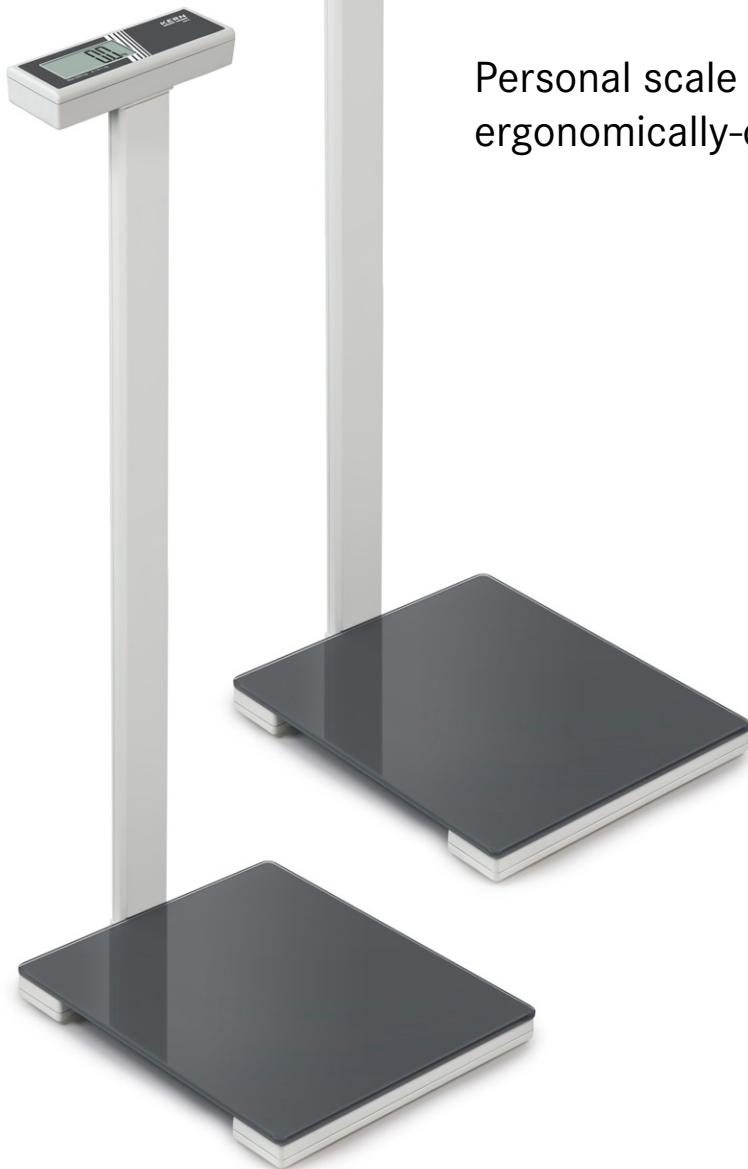


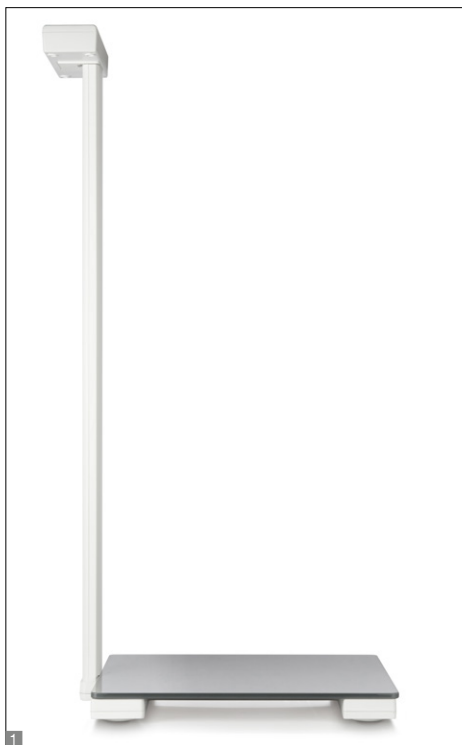
Model	Weighing capacity	Readability	Weighing plate	Net weight approx.
	[Max] kg	[d] kg	mm	kg
KERN				
MPB 300K100P	300	0,1	315×300×55	7
MPB 300K100	300	0,1	315×300×60	4,6



Personal floor scale KERN MPK · MPL

Personal scale with column for convenient,
ergonomically-optimised operation





Features

- This personal scale is the ideal measuring instrument for elderly care, paramedics, fitness clubs or in the private sector and can weigh overweight people up to 250 kg
- KERN MPL: BMI function to determine underweight/normal weight/surplus weight
- Weight displayed in kg or lb
- **1** Particularly flat design facilitates access
- Sturdy glass weighing plate for secure, comfortable standing position
- Easy and hygienic cleaning
- **2** Large display that is easy to read
- **2** The column, which is firmly fixed to the scale, makes it easy to operate the scale as well as to read the weighing results even under poor lighting conditions
- Easy to operate: simply tap on it – stand on it – read the weight
- Integrated AUTO-OFF function to preserve the batteries
- KERN MPL: Tare function to zero the balance
- **3** Delivered in design packaging

Technical data

- Large LCD display, digit height 28 mm
- Weighing plate dimensions W×D×H 350×350×45 mm
- Overall dimensions W×D×H 350×420×955 mm (incl. stand)
- Batteries included, 4×1.5 V AA, operating time up to 100 h
- Net weight approx. 3,8 kg

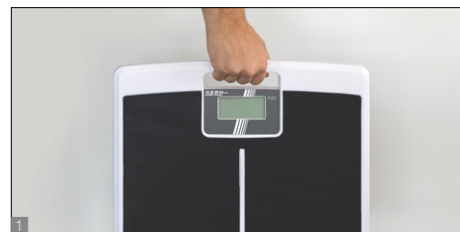
Accessories

- Cleaning cloths, alcohol-free cloths for disinfectant wiping, quick acting, based on modern quaternary ammonium compounds and effective against papova viruses. Particularly gentle on materials, and very well suited for disinfecting products which are sensitive to alcohol. Fulfill the legal requirements for occupational safety in accordance with TRGS 525/540. Packaging contents 100 pcs., size 20×22 cm per cloth, KERN MYC-01

STANDARD



Model	Weighing capacity	Readability
	[Max]	[d]
KERN	kg	kg
MPK 200K-1P	250	0,1
MPL 200K-1P	250	0,1



Personal scale with particularly large, flat weighing plate to make it easier to step on and give maximum safety

Features

- This personal scale is the ideal measuring instrument for elderly care, paramedics or private sector, and can weigh overweight people up to 200 kg
- Very large weighing plate
- Easy and hygienic cleaning
- **1** The scale can be easily transported using a handle and does not require much storage space
- **2** Particularly flat design facilitates access
- **3** Very large platform with non-slip and wear-resistant plastic-surface
- Easy to operate: simply tap on it – stand on it – read the weight
- Integrated AUTO-OFF function to preserve the batteries
- Weight displayed in kg or lb
- Large display that is easy to read
- Delivered in single design packaging
- Note: The models are only delivered in a set of 5 units. That means the price refers to a delivery of 5 units. Cannot be delivered individually

Technical data

- Large LCD display, digit height 30 mm
- Overall dimensions W×D×H
- Batteries included, 4×1,5 V AAA, operating time up to 20 h
- Net weight approx. 8 kg

Accessories

- Cleaning cloths, alcohol-free cloths for disinfectant wiping, quick acting, based on modern quaternary ammonium compounds and effective against papova viruses. Particularly gentle on materials, and very well suited for disinfecting products which are sensitive to alcohol. Fulfill the legal requirements for occupational safety in accordance with TRGS 525/540. Packaging contents 100 pcs., size 20×22 cm per cloth, KERN MYC-01

STANDARD

Model	Weighing capacity	Readability
	[Max]	[d]
KERN	kg	kg
MPI 200K-1S05	200	0,1



Compact wheelchair platform scale with two integrated access ramps for easy access

Features

- Especially suitable for weighing patients in wheelchairs because of the low-profile platform which can be approached from either side
- **1** The large steel weighing plate also makes it ideal for weighing obese patients
- Also ideal for rapid weighing of, for example, laundry carts, container trolleys, roller containers, etc.
- Secure and non-slip positioning with height-adjustable rubber feet
- **2** Level indicator to level the balance precisely
- Hold function: When patients do not stand or sit completely still, a stable weight is calculated using an average weight and this is then “frozen”. This means that you have sufficient time to attend to the patient first and then take the weight reading in peace
- BMI function to determine underweight/normal weight/surplus weight
- **3** The scale can easily be transported using the two rollers and two handles and does not require much storage space
- Wall mount for display device, standard
- Protective working cover included with delivery

Technical data

- Large backlit LCD display, digit height 25 mm
- Dimensions weighing surface W×D 800×800 mm
- Dimensions of display device W×D×H 200×130×60 mm
- Cable length of display device approx. 3 m
- Overall dimensions W×D×H 1066×1000×80 mm
- Batteries included, 6×1.5 V AA, operating time up to 40 h
- Net weight approx. 60 kg

Accessories

- Protective working cover over the display device, scope of delivery: 5 items, KERN MBC-A06S05
- Cleaning cloths, alcohol-free cloths for disinfectant wiping, quick acting, based on modern quaternary ammonium compounds and effective against papova viruses. Particularly gentle on materials, and very well suited for disinfecting products which are sensitive to alcohol. Fulfill the legal requirements for occupational safety in accordance with TRGS 525/540. Packaging contents 100 pcs., size 20×22 cm per cloth, KERN MYC-01



Model	Weighing capacity	Readability	Weighing surface	Net weight approx.
	[Max]	[d]		
KERN	kg	kg	mm	kg
MWB 300K-1	300	0,1	800×800	60



Chair scale KERN MCD

Mobile chair scale in ergonomically-optimised design for safe, convenient weighing



Chair scale KERN MCD



Features

- This chair scale is the ideal measuring instrument for elderly care and for paramedics, and is also suitable for overweight people with a weight up to 300 kg
- **1** Mobile version with four steerable wheels and particularly convenient locking brakes on both rear wheels
- With its four steerable wheels, this chair scale provides maximum mobility by bringing the scale to the patient. This ensures more efficient use of time for the staff and greater safety for the patients who can be weighed in their familiar environment
- The rollers, with their large diameter, make it easier to get over door thresholds, edges and across the gaps into elevators
- For fragile patients, the comfortable, ergonomically optimised seat offers secure support during weighing
- Because of the clearly contrasting black colour of the seating surface and footrests ideally suitable for dementia patients
- **2** Two foldable armrests and footrests make transfers into the chair easier. Ideal for overweight patients or barrier-free use, e.g. for transfers from a bed to the scale
- **3** Ergonomically positioned carrying handles

- Hold function: When patients do not sit completely still, a stable weight is calculated using an average weight and this is then “frozen”. This means that you have sufficient time to attend to the patient first and then take the weight reading in peace
- BMI function to determine underweight/normal weight/surplus weight
- Practical battery operation using standard batteries ensures a high level of flexibility and freedom from mains adapters, sockets, chargers, etc.
- High resolution readout: Readout [d] can be increased by one decimal place for 5 sec. by the touch of a key
- Protective working cover included with delivery

Technical data

- **3** Large LCD display, digit height 25 mm
- Dimensions of display device W×D×H 200×130×60 mm
- Dimensions of seating surface W×D 390×360 mm
- Overall dimensions W×D×H 625×990×985 mm
- Batteries included, 6×1.5 V AA, operating time up to 40 h
- Net weight approx. 20 kg

Accessories

- Protective working cover over the display device, scope of delivery: 5 items, KERN MBC-A06S05
- Cleaning cloths, alcohol-free cloths for disinfectant wiping, quick acting, based on modern quaternary ammonium compounds and effective against papova viruses. Particularly gentle on materials, and very well suited for disinfecting products which are sensitive to alcohol. Fulfill the legal requirements for occupational safety in accordance with TRGS 525/540. Packaging contents 100 pcs., size 20×22 cm per cloth, KERN MYC-01

STANDARD



Model	Weighing capacity	Readability
KERN	[Max] kg	[d] kg
MCD 300K-1	300	0,1

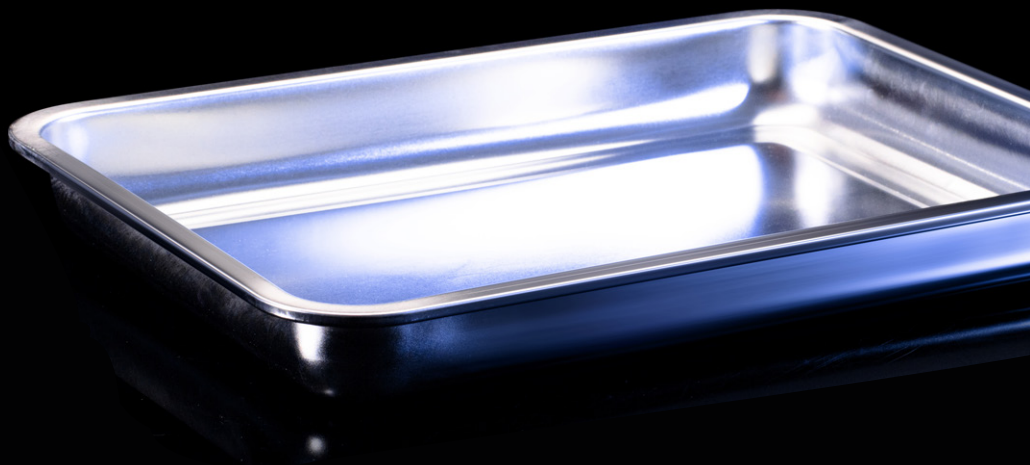
Hospital need

PROFESSIONAL CARE

KERN scales and measuring instruments for clinics, medical practices and rehabilitation facilities

Reliable scales are not only required in direct contact with patients, but also in adjacent areas such as laboratories, research, pathology, hospital laundries, etc. a wide variety of scales are used. These scales also have to meet high requirements, such as robust, dirt-repellent stainless steel surfaces that are hygienic and easy to clean. Simple operation and clearly legible displays speed up daily work, save costs and help to avoid mistakes.

The practical dynamometers, which we offer in various designs and measuring ranges, are particularly suitable for measuring muscle forces in the context of rehabilitation measures.



KERN RFS-A02



KERN FOB-NLO



Stainless steel drive-through scale with two integrated access ramps and EC type approval [M]

Features

- Robust stainless steel drive-through scale for rapid weighing of e.g. laundry carts, container trolleys, roller containers, etc. Ideal for hospital laundry services, goods inwards, hospital kitchens, etc.
- Low platform height and integrated access ramps on both sides facilitate access. No need for pit frame installation – which saves money
- Weighing bridge stainless steel, extremely resistant to bending
- **1** 4 load cells, stainless steel, encapsulated, protection against dust and water splashes IP68, suitable for continuous use in wet areas
- **2** Stainless steel display device with protection against dust and water splashes IP65
- Superior display size: digit height 52 mm, bright backlight for easy reading of weighing results, even in poor lighting conditions
- Easy and hygienic cleaning
- Suitable for the ever-increasing hygienic requirements in the medical environment
- Totalising of weights and piece counts
- Internal rechargeable battery pack included with the delivery

Technical data

- Large backlit LCD display, digit height 52 mm
- Weighing plate dimensions WxD 1000×1000 mm (Without ramps)
- Platform height in the drive-through area: 80 mm
- Overall dimensions WxD×H 1600×1200×80 mm
- Dimensions of display device WxD×H 266×165×96 mm
- Cable length of display device approx. 5 m
- Permissible ambient temperature -10 °C/40 °C

Accessories

- **3** Stand to elevate display device, height of stand approx. 750 mm, KERN YKP-02
- Pair of base plates to fix the weighing bridge to the floor, KERN BFN-A03
- **4** Large display with superior display size, KERN YKD-A02
- Cable with special length 15 m, between display device and platform, for verified models which must be ordered at the time of purchase, KERN BFB-A03

- RS 232 data interface including interface cable, 1,5 m, must be ordered at purchase, KERN KFN-A01
- Bluetooth data interface for wireless data transfer to PC or tablets, must be ordered at purchase, not in combination with verification. When installing the Bluetooth data interface, the RS-232 data interface can no longer be used, KERN KFB-A03
- Matrix needle printer, KERN YKN-01
- Universal label printer, KERN YKE-01
- Thermal printer, KERN YKB-01N
- For further details, plenty of further accessories and suitable printers, see Internet

Note: For verified scales the weighing bridge must be fixed to the floor. Optionally, with an access ramp, a footplate pair or a pit frame. Optionally configurable with IP68 display device on request. Shipment via freight forwarder. Please ask for dimensions, gross weight, shipping costs

STANDARD



FACTORY



Model	Weighing capacity	Readability	Verification value	Minimum load	Net weight approx.	Mandatory by law Verification
	[Max] kg	[d] kg	[e] kg	[Min] kg	kg	M III KERN
NFN 600K-1M	600	0,2	0,2	4	105	965-230
NFN 1.5T-4M	1500	0,5	0,5	10	105	965-230



Compact organ scale made of stainless steel, particularly well protected and hygienic to clean thanks to IP67 protection and smooth stainless steel surfaces


Features

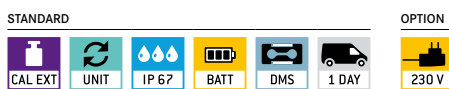
- Particularly suitable to determine the specific weight of organs, tissues, etc. in pathology or in the laboratory
- Thanks to the stainless steel design of the housing and platform with smooth surface, the scale is rust-free and easy to clean
- Protection against dust and water splashes IP67 (only when using battery)
- High mobility: thanks to battery operation, compact, lightweight construction, it is suitable for the use in several locations
- Protective working cover included with delivery

Technical data

- Large backlit LCD display, digit height 25 mm
- Overall dimensions W×D×H 285×255×90 mm
- Ready for use: Batteries included, 4×1.5 V AA, operating time up to 48 h
- Net weight approx. 3,8 kg
- Permissible ambient temperature 5 °C/35 °C

Accessories

- Protective working cover, scope of delivery 5 items, KERN FOB-A13S05
- External mains adapter, KERN YKA-29
-  Tare pan made from stainless steel, Overall dimensions W×D×H, 400×300×45 mm, KERN RFS-A02



Model	Weighing capacity	Readability	Weighing plate
	[Max] kg	[d] g	mm
KERN			
Multi-division balance, with increasing or decreasing load, it switches automatically to the next largest or smallest weighing range [Max] and readout [d].			
FOB 7K-4NLO	5 7,5	0,5 1	252×200



See images for dynamometers with optional accessories AC 45-47



Force measurement for medical applications

Features

- Determining muscle function and force is used within many areas of medical diagnostics. Amongst others, in
 - orthopaedics for determining the function of the musculoskeletal system
 - physiotherapy for restoring motivity
 - occupational therapy for treating physical damage
- Within sport, too, measuring muscular force development can be used alongside training
- These measurements can be supported by the SAUTER FK (alternatively SAUTER FH) force gauge when connected with the three physio sensors (AC 45, AC 46, AC 47) as shown
- These sensors to measure muscular strength have been designed in an ergonomic manner. The surface is made of soft foam rubber, which sits comfortably against the skin
- Connecting the precision measuring device with the optional stainless steel handles SAUTER AFK 02 | AFH 04 means that you can obtain reliable weighing results

- Our recommendation: Combine the force measuring device (Sauter FK or FH) with the stainless steel handles (Sauter AFK 02 or AFH 04, depending on the force measuring device selected) and one or more physio sensors (AC 45, AC 46, AC 47)
- All components can be ordered individually

Technical data

SAUTER FK

- Overall dimensions W×D×H 195×82×35 mm
- Ready for use: Batteries included, 6×1.5 V AA

SAUTER FH

- Overall dimensions W×D×H 230×66×36 mm
- Rechargeable battery pack integrated, as standard, operating time up to 12 h without backlight, charging time approx. 4 h

Accessories

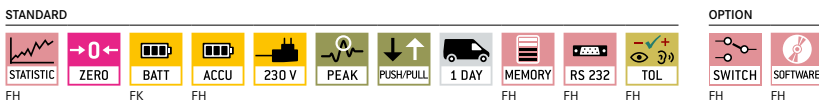
- **1** Concave force sensor with optimised radius for the measurement particularly of arms and legs up to 1 kN, thread: M6, KERN AC 45
- **2** Flat square-shaped sensor for lateral power sensing of back, chest or arm up to 1 kN, thread: M6, KERN AC 46
- **3** Round sensor to measure particular muscle groups, such as, for example, the shoulder up to 1 kN, inner thread: M6, KERN AC 47

SAUTER FK

- **4** Stainless steel handle bar with rubber grip, SAUTER AFK 02
- Threaded pin made of steel for SAUTER force gauges and clamps, external thread: M6, internal thread: M8, KERN AFM 22

SAUTER FH

- **4** Stainless steel handle bar with rubber grip, SAUTER AFH 04



Model	Measuring range [Max] N	Division [d] N	Thread	Net weight approx. kg
SAUTER FK 50	50	0,02	M8	0,75
FK 100	100	0,05	M8	0,75
FK 250	250	0,1	M8	0,75
FK 500	500	0,2	M8	0,75
FK 1K	1000	0,5	M8	0,75
FH 50	50	0,01	M6	0,65
FH 100	100	0,05	M6	0,65
FH 200	200	0,1	M6	0,65
FH 500	500	0,1	M6	0,65

Microscopes and Refractometers

PROFESSIONAL CARE

KERN offers you a complete, carefully compiled range of biological microscopes, stereomicroscopes, metallurgical microscopes, polarization microscopes, particularly flexible, pre-configured stereomicroscope sets, individually configurable stereomicroscope systems as well as microscope cameras and camera software.

The main fields of application are haematology, urology, gynaecology, dermatology, pathology, microbiology and parasitology, immunology, oncology, cell and tissue culture research and breeding, veterinary medicine, etc.

The KERN high-performance microscopes are particularly suitable for viewing preparations in culture vessels (bottles, trays, microtiter plates), translucent and thin, low-contrast, demanding preparations (e.g. living Mammalian cells, tissue, possibly also microorganisms, immunofluorescence, FISH, DAPI coloring etc.)

Furthermore, KERN offers a wide range of analogue and digital refractometers. Quickly and easily determine reliable measured values, no matter whether in the laboratory or on site, this ensures safety, consistent quality and accelerates the processes. This is what the analogue and digital refractometers from KERN stand for, and at an extremely attractive price in consistently high quality. The refractometers are mainly used in hospitals, doctors' surgeries, medical training facilities, nursing homes, sports medicine (doping control), veterinary surgeries, etc.





Illustration shows optional accessories, tablet with integrated camera KERN ODC 241, further details see Internet

Elegant, dynamic and impressive – the new all-round compound microscope for schools, training and laboratories

Features

- The OBE-12/13 range stands out through its exclusive, dynamic device, which is second to none in terms of sturdy construction and ergonomics. The clever storage compartment on the back enables quick practical storage for your power cable. Thanks to the USB connection technology, it is also possible to supply power using an external powerbank
- The impressive, infinitely dimmable 3 W LED guarantees bright illumination of your sample
- A further highlight is the Butterfly tube which is integrated as standard and which enables you to achieve the ideal viewing angle. The height-adjustable and thereby focusable 1.25 Abbe condenser with aperture diaphragm is a further quality feature of the OBE range and guarantees the very best concentration of light

- Height adjustment of the fully-equipped mechanical stage is carried out using a coarse and fine focusing knob on both sides. The ergonomically designed coaxial drive enables you to work with the samples and move them rapidly
- A large selection of different eyepieces and objectives are available to you as accessories
- **1** Monocular version, **2** Trinocular version, **3** Butterfly tube
- A protective dust cover, eye cups, as well as multi-lingual user instructions are included in the scope of the delivery
- A C-mount adapter is required to connect a camera to the trinocular version. You can select this adapter from the model outfit list, see Internet

Scope of application

- Training, haematology, sediment investigation, doctor's practice

Applications/Samples

- Translucent, thin, high-contrast, less complex samples (e.g. plant tissue, coloured cells/parasites)

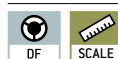
Technical data

- Finite optical system
- Quadplex nosepiece
- Butterfly 30° inclined
- Diopter adjustment: One-sided (for binocular and trinocular models)
- Overall dimensions W×D×H 360×150×320 mm
- Net weight approx. 4,6 kg

STANDARD



OPTION



Model

Standard configuration

KERN	Tube	Eyepiece	Objective quality	Objectives	Illumination
OBE 121	Monocular	HWF 10×/ø 18 mm	Achromatic		3W LED (transmitted)
OBE 122	Binocular	HWF 10×/ø 18 mm	Achromatic	4×/10×/40×	3W LED (transmitted)
OBE 124	Trinocular	HWF 10×/ø 18 mm	Achromatic		3W LED (transmitted)
OBE 131	Monocular	HWF 10×/ø 18 mm	Achromatic		3W LED (transmitted)
OBE 132	Binocular	HWF 10×/ø 18 mm	Achromatic	4×/10×/40×/100×	3W LED (transmitted)
OBE 134	Trinocular	HWF 10×/ø 18 mm	Achromatic		3W LED (transmitted)



Also available as digital, trinocular and phase contrast model. KERN OBL-1 also available with EPI fluorescence illumination unit on request



The high-performance compound microscope for every laboratory, hospital and doctor's practice with fixed, pre-centred Koehler illumination

Features

- The KERN OBL-1 models are excellent, stable laboratory microscopes for all common routine applications
- Depending on your application you can choose between different models with a strong 3 W-LED illumination.
- **1** Trinocular models as well as specially pre-configured phase contrast models OBL 146/OBL 156 available, please feel free to contact us
- The fixed, pre-centred and focusable 1,25 Abbe condenser with aperture diaphragm and field diaphragm gives you a simplified Koehler illumination, the centre cannot be moved
- The large mechanical stage and its specimen holder holds up to two samples at the same time, which can be focused quickly and easily by a coaxial coarse and fine drive on both sides

- A large selection of eyepieces, **2** objectives and colour filters as well as a darkfield condenser, a simple **3** polarising unit, different **4** phase contrast kits through to HBO and LED fluorescence units are available to you as accessories
- A protective dust cover, eye cups, as well as multi-lingual user instructions are included in the scope of delivery
- A C-mount adapter is required to connect a camera to the trinocular version. You can select this adapter from the model outfit list

Please refer to the website for further details as well as information on the full range of model features

Scope of application

- Haematology, urology, gynaecology, dermatology, pathology, microbiology and parasitology, immunology, oncology, entomology, vets, water analysis, breweries, sewage plants

Applications/Samples

- Translucent, thin, low-contrast, challenging samples (e.g. living mammal cells, bacteria, tissues)

Technical data

- Infinity optical system
- Quadplex nosepiece
- Siedentopf 30° inclined/360° rotatable
- Diopter adjustment: One-sided
- Overall dimensions WxDxH 395x200x380 mm
- Net weight approx. 6,7 kg

STANDARD

--	--	--	--	--	--	--	--	--

OBL 14-15

OPTION

--	--	--

OPTION OBL 12-13

--	--	--

Model

Standard configuration

KERN	Tube	Eyepiece	Objective quality	Objectives	Illumination
OBL 127	Binocular	HWF 10x/ø 20 mm	Infinity E-Plan	4x/10x/	3 W LED (transmitted)
OBL 137	Trinocular	HWF 10x/ø 20 mm	Infinity E-Plan	40x/100x	3 W LED (transmitted)
OBL 146	Binocular	HWF 10x/ø 20 mm	Infinity E-Plan/	4x/PH10x/	3 W LED (transmitted)
OBL 156	Trinocular	HWF 10x/ø 20 mm	Plan	PH40x/100x	3 W LED (transmitted)



OBN-13



OBN-15



Professionalism and versatility united in one microscope – with Koehler illumination for demanding applications

! Also available as fluorescence microscope

Features

- The OBN series stands out because of its unbeatable and consistently high quality and its ergonomic design. The range of modular components means that the OBN series can be individually customised for the professional user
- Depending on the application, there is a choice of models with strong, continuously dimmable 3 W LED or 20 W halogen transmitted illumination (Philips)
- In addition the halogen variant is available as a pre-configured phase contrast microscope, which, through the combination of a 2 professional quintuple condenser wheel, phase contrast condenser and Infinity Plan phase contrast objectives makes it a high-quality, fully-equipped microscope for all applications related to contrast procedures
- 1 This series has a professional Koehler illumination unit with an adjustable field diaphragm as well as a height-adjustable 1,25

- Abbe condenser which can be centred and which has an adjustable aperture diaphragm
- The extremely large mechanical stage with ergonomic, coaxial coarse and fine focusing knob on both sides enables you to adjust and focus your sample rapidly and accurately
- A wide variety of modular systems, such as, for example, a swing-out condenser, various eyepieces, objectives, colour filters, phase contrast units, a darkfield condenser, a simple polarising unit, Butterfly Tube, through to complete fluorescence units are available to you as accessories
- This centring eyepiece for adjusting the phase contrast (OBN 15 series), a protective dust cover, eye cups as well as multi-lingual user instructions are included in the scope of delivery
- A C-mount adapter is required to connect a camera. You can select this adapter from the model outfit list

Scope of application

- Haematology, urology, gynaecology, dermatology, pathology, microbiology and parasitology, immunology, sewage treatment plants, oncology, entomology, vets, water analysis and breweries

Applications/Samples

- Translucent, thin, low-contrast, challenging samples (e.g. living mammal cells, bacteria, tissue)

Technical data

- Infinity optical system
- Quintuple nosepiece
- Siedentopf 30° inclined/360° rotatable
- Diopter adjustment: Both-sided
- Overall dimensions WxDxH 390x200x400 mm
- Net weight approx. 9 kg

Please refer to the website for further details as well as information on the full range of model features

STANDARD

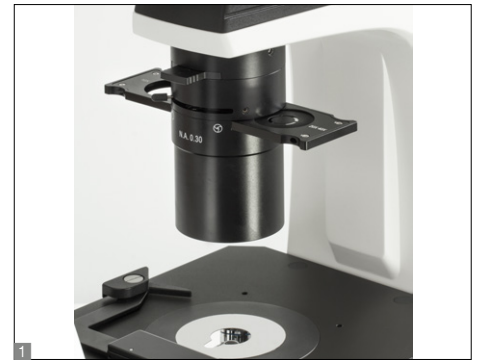
360° TRINO ABBE HAL LED PH INFINITY 230 V 1 DAY

OPTION

FL-HBO FL-LED DF POLAR SCALE

OBN 15

Model	Tube	Eyepiece	Objective quality	Objectives	Illumination
KERN					
OBN 132	Trinocular	HWF 10x/ø 20 mm	Infinity Plan	4x/10x/20x/	6 V/20 W Halogen (transmitted)
OBN 135	Trinocular	HWF 10x/ø 20 mm	Infinity Plan	40x/100x	3 W LED (transmitted)
OBN 141	Trinocular	WF 10x/ø 20 mm	Infinity Plan		LED + 3 W LED Epi Fluorescence (B/G)
OBN 147	Trinocular	WF 10x/ø 20 mm	Infinity Plan	4x/10x/20x/	Halogen + 100 W Epi Fluorescence (B/G)
OBN 148	Trinocular	WF 10x/ø 20 mm	Infinity Plan	40x/100x	Halogen + 100 W Epi Fluorescence (B/G/UV/V)
OBN 158	Trinocular	HWF 10x/ø 20 mm	Infinity Plan	4x/PH10x/PH20x/	6 V/20 W Halogen (transmitted)
OBN 159	Trinocular	HWF 10x/ø 20 mm	Infinity Plan	PH40x/PH100x	3 W LED (transmitted)



The inverted biological laboratory microscope – also with fluorescence

Features

- The OCM range stands out through its design which is ergonomic, robust and extremely stable. This design, with its large working distance, is particularly suitable for the monitoring and analysis of cell cultures, for example
- Strong and infinitely adjustable 30 W halogen illumination unit ensures the optimum illumination in the bright field of your samples. In addition, either an Osram 100 W-HBO- (OCM 165/166) or a 5 W-LED Epi fluorescence incident illumination unit (OCM 167/168) are available to you as a fluorescence microscope for perfect illumination and stimulation of your fluorescence samples
- **1** A special Abbe N.A. 0.3 condenser with aperture diaphragm and large working distance of 72 mm guarantees the very best working practise in the bright field and with fluorescence applications
- As standard, the OCM range is fitted with a trinocular eyepiece tube
- The mechanical stage including specimen holder (∅ 118 mm) means that you can work quickly and effectively. Further brackets for petri dishes are included in delivery or available as accessories
- Further options such as, for example, a selection of eyepieces, objectives, specimen holders and other phase contrast units can be integrated as accessories
- A protective dust cover as well as multi-lingual user instructions are included in the scope of delivery

Scope of application

- Research and breeding of cell cultures and tissue cultures

Applications/Samples

- Particularly for viewing samples in culture vessels (flasks, petri dishes, microtitre plates), translucent, thin, low-contrast, challenging samples (e.g. immuno fluorescence, FISH, DAPI staining, etc.)

Technical data

- Infinity optical system
- **2** Quintuple nosepiece
- Siedentopf-head, 45° tilt
- Dioptre compensation on both sides

OCM 161

- Overall dimensions W×D×H 304×599×530 mm
- Net weight approx. 13,5 kg

OCM 165 – 168

- Overall dimensions W×D×H 304×782×530 mm
- Net weight approx. 21 kg

Please refer to the website for further details as well as information on the full range of model features

STANDARD



Model	Standard configuration				
KERN	Tube	Eyepiece	Objective quality	Objectives	Illumination
OCM 161	Trinocular	HWF 10×/∅ 22 mm	Infinity Plan		6 V/30 W Halogen (transmitted)
OCM 165	Trinocular	HWF 10×/∅ 22 mm	Infinity Plan	LWD10×/LWD20×/	6 V/30 W Halogen + 100 W Epi Fluorescence (B/G)
OCM 166	Trinocular	HWF 10×/∅ 22 mm	Infinity Plan	LWD40×/ LWD20×PH	30 W Halogen + 100 W Epi Fluorescence (UV/V/B/G)
OCM 167	Trinocular	HWF 10×/∅ 22 mm	Infinity Plan		5W-LED + 5W Epi Fluorescence (B/G)
OCM 168	Trinocular	HWF 10×/∅ 22 mm	Infinity Plan		5W-LED + 5W Epi Fluorescence (UV/V/B/G)



KERN ORF

Refractive index measurement for hospitals, medical training institutions or in sports medicine

- ▲ Also available as digital hand- or laboratory versions as well as an ABBE refractometer.
- We will be happy to consult you.

Features

- The KERN ORA refractometers are universal, maintenance-free analogue handheld refractometers
- The main scope of applications is: Hospitals, Doctor's surgeries/Physicians, Medical training institutions, Nursing homes, Sports medicine (doping test)
- The ORA 2PA is particularly suitable for measuring the specific gravity (sg) in urine, the quantity of serum (serumproteine) in urine (doping control among athletes), and the refractive index. The ORA 5PB has been developed specially for the veterinary sector
- The handy and robust design allows the easy, efficient and sustainable use in everyday life.
- Manually calculated conversions and errors of the user are avoided by multiple selectable scales
- These scales are especially developed, exactly calculated and checked. They are also characterized by their thin and clear lines
- The optical system and the prism cover are made of special material which allows a low-tolerance measuring
- All ORA models are equipped with an eyepiece for easy and smooth setting for many different diopter strengths
- The models marked with "ATC" have an automatic temperature compensation which enables accurate measurement at different ambient temperatures
- ■ The following accessory parts are included:
 - Storage box
 - Calibration liquid
 - Pipette
 - Small screwdriver
 - Cleaning tissue
- Further accessories are optionally available

Technical data

- Die-cast housing of copper-aluminium alloy, chrome coated
- Measurement temperature without ATC: 20 °C
- Measurement temperature range with ATC: 10 °C/30 °C
- Dimensions of the box W×D×H 205×75×55 mm
- Packing dimensions W×D×H 215×94×65 mm
- Product length: approx. 130 – 200 mm (depending on the model)
- Net weight approx. 145 g

Please refer to the website for further details as well as information on the full range of model features

STANDARD OPTION



Model	Scales	Measuring range	Division	ATC
KERN				
ORA 32BA	Brix	0 – 32 %	0,2 %	✓
ORA 4RR	Refractive index	1,440 – 1,520 nD	0,001 nD	
ORA 2PA	Serum protein	0 – 12 g/dl	0,2 g/dl	
	Urine (spec. gravity)	1,000 – 1,050 sgU	0,002 sgU	✓
ORA 5PB	Refractive index	1,3330 – 1,3600 nD	0,0005 nD	
	Serum protein	2 – 14 g/dl	0,1 g/dl	
	Urine (s. g. dog)	1,000 – 1,060 sgU	0,001 sgU	
	Urine (s. g. cat)	1,000 – 1,060 sgU	0,001 sgU	

Veterinary scales

PROFESSIONAL CARE

Animal scales for weighing various animals such as rabbits, cats, dogs, snakes, sheep, etc.

Electronic animal scales from KERN are the very best tool for checking animal weight. KERN animal scales stand out from the crowd because they are easy to use, have a high degree of mobility, with robust technology, a large display and ergonomic design. From scales for small animals, which are also ideal for weighing animal feed in line with a diet sheet, through to high-capacity floor scales for animals weighing up to 300 kg, right up to hanging and crane scales for mobile weighing of animals up to 1 ton, KERN's veterinary scale range offers a wide choice.

Many useful functions assist the vet, animal keeper or pet owner in their daily work with the animal. Thanks to a special animal weighing program, a steady weight will be displayed, even if the animal moves during the weighing process. You can use the practical HOLD function, which means the obtained weight will continue to be displayed even after the animal has been removed from the scale. You therefore have time to take care of the animal first.

Whether stationary in a veterinary practice, or mobile at the home of a pet owner, in enclosures or in the wild, the power supply to the KERN veterinary scales is always guaranteed thanks to mains or battery operation.





KERN HCB



2 KERN HCN



Practical assistant for the mobile weighing of heavy pets, animal feed etc. up to 1 t!

Features

- Thanks to the animal weighing function, it can also be used by vets. Compact – so it can be stored in the vet’s case and is ideally suited for heavy pets
- Hold function: For easy reading of the weighing result, the display can be “frozen” in different ways. Either automatically when the weighing value remains unchanged or manually by pressing the Hold key
- Varied options for hanging the items, thanks to the stainless steel hook and stainless steel snap links included as standard (not with models HCB with [Max] ≥ 0.5 t)
- Peak load display (peak hold), Measuring frequency 5 Hz

KERN HCB

- [Max] ≤ 200 kg: Snap link (stainless steel) with safety catch as standard
- [Max] ≤ 200 kg: Hook (stainless steel) as standard
- 1 [Max] ≥ 500 kg: Reinforced version for heavy loads. Snap link and hook not included

KERN HCN

- 2 Housing stainless steel, IP65-protected against dust and water splashes
- Snap link (stainless steel) with safety catch as standard
- Hook (stainless steel) as standard
- 3 Second display on the back of the balance

- KERN HCB: Ready for use: Batteries included, 3×1.5 V AA, operating time up to 300 h
- KERN HCN: Ready for use: Batteries included, 2×1.5 V AA, operating time up to 200 h

Accessories

Accessories for models with [Max] ≤ 200 kg

- Snap link (stainless steel) with safety catch, opening approx. 15 mm, KERN HCB-A01
- Hook (stainless steel), opening approx. 25 mm, KERN HCB-A02

Accessories for KERN HCB

- Hook with safety catch, galvanised and lacquered cast steel, not rotatable, scope of delivery: 2 shackles, 1 connecting link, 1 hook, KERN YHA-06
- High-strength shackle, hot-dipped galvanised cast steel bracket, curved edge. Scope of delivery: 2 shackles, KERN YSC-04

Technical data

- LCD display, digit height 12 mm
- Hole diameter of load support, model with [Max] ≤ 200 kg: approx. 14 mm [Max] ≥ 500 kg: approx. 16 mm



Model	Weighing capacity		Readability	Dimensions housing W×D×H mm	Height with snap link and hook mm	Net weight approx. kg
	[Max]	kg				
KERN			[d]			
			g			
HCB 20K10	20		10	82×43×153	290	0,30
HCB 50K20	50		20	82×43×153	290	0,30
HCB 50K100	50		100	82×43×153	290	0,30
HCB 99K50	99		50	82×43×153	290	0,30
HCB 100K200	100		200	82×43×153	290	0,30
HCB 200K100	200		100	82×43×153	290	0,30
HCB 200K500	200		500	82×43×153	290	0,30
HCB 0.5T-3	500		1000	82×43×153	-	0,40
HCB 1T-3	1000		2000	82×48×153	-	0,60
				Stainless steel		
HCN 50K100IP	50		100	96×48×179	315	0,50
HCN 100K200IP	100		200	96×48×179	315	0,50
HCN 200K500IP	200		500	96×48×179	315	0,50



All-purpose small pet scale for mobile and stationary use

Features

- Ideal table scale for weighing small animals or for the laboratory
- Particularly flat design
- Plastic weighing plate, can be removed
- Simple and convenient 2-key operation
- Tare function facilitates formulation work
- Easy and hygienic cleaning
- Ready for use: Batteries included
- Socket for mains adapter included

Technical data

- Large LCD display, digit height 15 mm
- Dimensions weighing surface
 - A** ø 82 mm, plastic, with conductive lacquer
 - B** ø 105 mm, plastic
 - C** ø 150 mm, plastic, see larger picture
- Batteries included, 9 V block, respectively 2×1.5 V AA
- Permissible ambient temperature 5 °C/35 °C

Accessories

- Stainless steel weighing plate, only for models with weighing plate size **B**, KERN EMB-A02
- External universal mains adapter, with universal input and optional input socket adapters for EU, CH, GB, USA, KERN YKA-03N

STANDARD

CAL EXT UNIT UNDER BATT DMS 1 DAY

OPTION

B MULTI

Model	Weighing capacity [Max] kg	Readability [d] g	Weighing plate	Dimensions housing W×D×H mm	Net weight approx. kg
KERN					
EMB 200-3	200	0,001	A	170×244×54	0,85
EMB 200-2	200	0,01	B	170×244×39	0,50
EMB 600-2	600	0,01	B	170×244×39	0,50
EMB 2000-2	2000	0,01	C	170×244×39	0,90
EMB 500-1	500	0,1	C	170×244×39	0,55
EMB 1200-1	1200	0,1	C	170×245×39	0,55
EMB 6000-1	6000	0,1	C	170×244×39	0,55
EMB 2200-0	2200	1	C	170×244×39	0,55
EMB 5.2K1	5200	1	C	170×244×39	0,55
EMB 5.2K5	5200	5	C	170×244×39	0,55



KERN FOB-NS



KERN FOB-NL

Compact stainless steel small pet scales with high-level protection against dust and water splashes

Features

- Thanks to the stainless steel design of the housing and platform with smooth surface, the scale is rust-free and easy to clean
- High mobility: thanks to compact, flat construction, it is suitable for use in several locations, secure and non-slip positioning through rubber feet
- Protective working cover included with delivery

KERN FOB-NS

- Particularly flat design
- **1** Protection against dust and water splashes IP65 (only when using battery)

KERN FOB-NL

- **1** FOB 3K-4NL: Protection against dust and water splashes IP65 (only when using battery)
- **2** Protection against dust and water splashes IP67 (only when using battery)

Technical data

FOB 7K-4NL, FOB 10K-3NL, FOB 30K-3NL:

- Multi-division balance, with increasing or decreasing load, it switches automatically to the next largest or smallest weighing range [Max] and readout [d].

Accessories

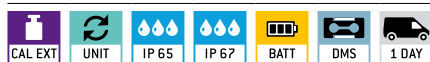
KERN FOB-NS

- Protective working cover, scope of delivery 5 items, KERN FOB-A12S05
- External mains adapter, KERN FOB-A09

KERN FOB-NL

- Protective working cover, scope of delivery 5 items, KERN FOB-A13S05
- External mains adapter, KERN YKA-29

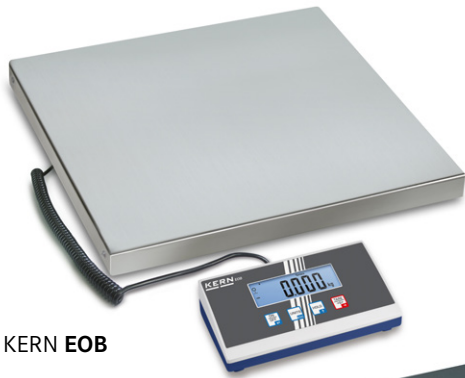
STANDARD



OPTION



KERN	FOB 0.5K-4NS	FOB 5K-3NS	FOB 3K-4NL	FOB 7K-4NL	FOB 10K-3NL	FOB 30K-3NL
Weighing range [Max] kg	0,5	5	3	5 7,5	8 15	16 30
Readability [d] g	0,1	1	0,2	0,5 1	1 2	2 5
LCD display, digit height	20 mm, without backlight		25 mm, without backlight		25 mm, with backlight	
Weighing plate WxD mm	120x150		248x198		252x200	
Overall dimensions WxDxH mm	170x150x40		295x260x95		285x255x90	
Power supply	Ready for use: battery 9 V block standard, operating time up to 24 h			Ready for use: battery 4x1,5 V AA standard, operating time up to 66 h without backlight		
Net weight approx. kg	0,8		3,8			
Permissible ambient temperature	10 °C/35 °C		10 °C/40 °C		5 °C/35 °C	



KERN EOB



KERN EOE



Compact veterinary scale for diverse applications – also with XL platform

Features

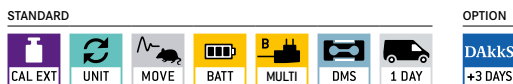
- Platform scale to weigh animals
- Weighing plate material, easy and hygienic cleaning
KERN EOB: stainless steel
KERN EOE: steel, painted
- Simple and convenient 4-key operation
- Animal weighing program: while weighing animals that are unable to sit or lie still, a mean average weight value is determined. This allows for sufficient time to attend to the animal, and then get a weight reading
- Integrated AUTO-OFF function to preserve the batteries
- Wall mount for display device, standard
- Universal external mains adapter included with delivery
- Protective working cover included with delivery

Technical data

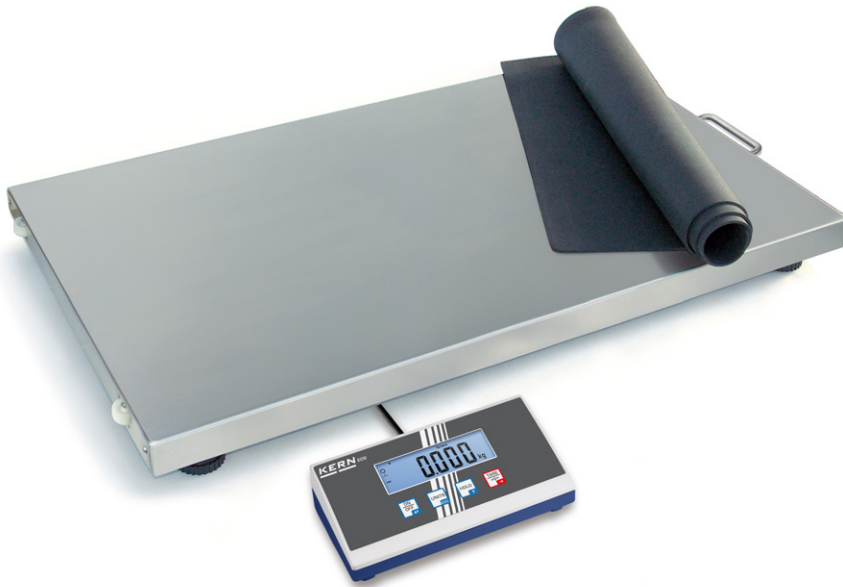
- Large LCD display, digit height 25 mm
- Dimensions of display device W×D×H 235×114×51 mm
- Weighing plate dimensions
A W×D×H 315×305×57 mm
B W×D×H 550×550×58 mm
C W×D×H 950×500×58 mm
- Optional battery operation, 4×1.5 V AA not included in scope of delivery, operating time up to 60 h (EOB), 100 h (EOE)
- Permissible ambient temperature 5 °C/35 °C

Accessories

- Protective working cover over the display device, scope of delivery: 5 items, KERN EOB-A04BS05
- **1** Stand to elevate display device, for models with weighing plate size **A**, Height of stand approx. 480 mm KERN EOB-A01N
- **2** Stand to elevate display device, height of stand approx. 1000 mm, KERN EOB-A02B
- Non-slip rubber mat, W×D×H 945×505×5 mm, KERN EOE-A01



Model	Weighing capacity [Max] kg	Readability [d] g	Weighing plate	Cable length (spiral cable) approx m	Net weight approx. kg	Option
						DAKKS Calibr. Certificate DAKKS KERN
KERN						
EOB 15K5	15	5	A	1,8	3,8	963-128
EOB 35K10	35	10	A	1,8	3,8	963-128
EOB 60K20	60	20	A	1,8	3,8	963-129
EOB 60K20L	60	20	B	2,7	13	963-129
EOE 150K50XL	150	50	C	2	18	963-129
EOE 300K100XL	300	100	C	2	18	963-129



Affordable veterinary model that is suitable for stationary or mobile use

Features

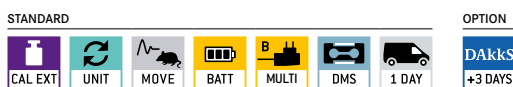
- Robust platform scale to weigh large animals
- Weighing plate stainless steel, painted steel base. Easy and hygienic cleaning
- The low platform height facilitates access
- The scale can be easily transported using rollers and a handle and does not require much storage space
- Animal weighing program: while weighing animals that are unable to sit or lie still, a mean average weight value is determined. This allows for sufficient time to attend to the animal, and then get a weight reading
- Simple and convenient 4-key operation
- Integrated AUTO-OFF function to preserve the batteries
- Wall mount for display device, standard
- Protective working cover included with delivery
- Non-slip rubber mat included with delivery
- Universal external mains adapter included with delivery

Technical data

- Large LCD display, digit height 25 mm
- Dimensions of display device W×D×H 235×114×51 mm
- Cable length display device, spiral cable, approx. 2,7 m
- Weighing plate dimensions, W×D×H 950×500×58 mm, stainless steel
- Optional battery operation, 4×1.5 V AA not included in scope of delivery, operating time up to 60 h
- Net weight approx. 17 kg

Accessories

- Protective working cover over the display device, scope of delivery: 5 items, KERN EOB-A04BS05
- Stand to elevate display device, height of stand approx. 1000 mm, KERN EOB-A02B
- **1** Non-slip rubber mat, W×D×H 945×505×5 mm, KERN EOE-A01



Model	Weighing capacity	Readability	Option
			DAKKS Calibr. Certificate
KERN	[Max] kg	[d] g	DAKKS KERN
EOS 150K50XL	150	50	963-129
EOS 300K100XL	300	100	963-129

HOME CARE



KERN MFB

KERN Home Care balances have been specially designed for the user for self-monitoring of their body weight and other parameters.

As with all KERN devices, these balances also undergo our strict quality controls and have been popular, tried and tested products for our customers for many years.

Non-verified scales are not permitted to be used in medical applications. They are used for self-monitoring of the health status. Examples of these include personal scales and body fat scales. Such scales can be used to determine weight trends so that a doctor can be consulted in case of doubt. The patient is then weighed on verified scales at the medical practice to make a diagnosis.

DID YOU KNOW?

Our body analysis scale produces, within a very short period of time, an overview of your body composition and measures values such as body fat, body water, muscle mass, proportion of bone as well as body weight and calculates the BMI and exercise metabolic rate.

→ Ideal for all athletes and all those who are health-conscious



Ergonomically-optimised baby scale with large lying surface

Features

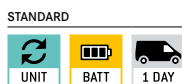
- Modern design
- Large, ergonomically optimised tray for safe weighing of neonates
- Robust plastic tray
- Easy and hygienic cleaning
- Particularly flat and lightweight construction, so it is easy to transport and store
- Secure and non-slip positioning with rubber feet
- Easy to use
- Hold function: When patients do not lie completely still, a stable weight is calculated using an average weight and this is then “frozen”. This means that you have sufficient time to attend to the young patient first and then read the weight reading in peace
- Special function for neonatology centres: Difference function for calculating the weight gain before and after feeding
- Internal weight memory for one weight value
- Integrated AUTO-OFF function to preserve the batteries
- Weight displayed in kg or lb
- **Note:** The models are only delivered in a set of 5 units. That means the price refers to a delivery of 5 units. Cannot be delivered individually

Technical data

- LCD display, digit height 30 mm
- Dimensions of tray W×D 560×225 mm
- Overall dimensions W×D×H 597×350×74 mm
- Batteries included, 2×1.5 V AAA, operating time up to 20 h
- Net weight 2 kg

Accessories

- Cleaning cloths, alcohol-free cloths for disinfectant wiping, quick acting, based on modern quaternary ammonium compounds and effective against papova viruses. Particularly gentle on materials, and very well suited for disinfecting products which are sensitive to alcohol. Fulfill the legal requirements for occupational safety in accordance with TRGS 525/540. Packaging contents 100 pcs., size 20×22 cm per cloth, KERN MYC-01
- **1** Carrying bag for mobile use, a carrying handle and shoulder strap ensure comfortable handling. Note: The models are only delivered in a set of 5 units. That means the price refers to a delivery of 5 units. Cannot be delivered individually, KERN YTB-01S05
- **2** Backpack for mobile use, 2 padded carrying straps and carrying handles for safe, convenient handling, additional, large zipped compartment for storing objects. Note: The models are only delivered in a set of 5 units. That means the price refers to a delivery of 5 units. Cannot be delivered individually, KERN YTB-02S05



Model	Weighing capacity	Readability
	[Max] kg	[d] kg
KERN MBD 20K-2S05	15	0,01



The robust classic for quick determination of body weight

Features

- Timeless design
- Robust construction
- **1** Large, clear circular scale which is easy to read
- **2** Large tread with anti-slip surface made of plastic
- Secure and non-slip positioning with rubber feet
- Easy to operate: stand – read the weight
- Easy adjustment of the display using the setting wheel
- Delivered in single design packaging
- **Note:** The models are only delivered in a set of 5 units. That means the price refers to a delivery of 5 units. Cannot be delivered individually

Technical data

- Digit height 8 mm
- Overall dimensions W×D×H 285×425×85 mm
- Net weight 3 kg

Accessories

- Cleaning cloths, alcohol-free cloths for disinfectant wiping, quick acting, based on modern quaternary ammonium compounds and effective against papova viruses. Particularly gentle on materials, and very well suited for disinfecting products which are sensitive to alcohol. Fulfill the legal requirements for occupational safety in accordance with TRGS 525/540. Packaging contents 100 pcs., size 20×22 cm per cloth, KERN MYC-01

STANDARD



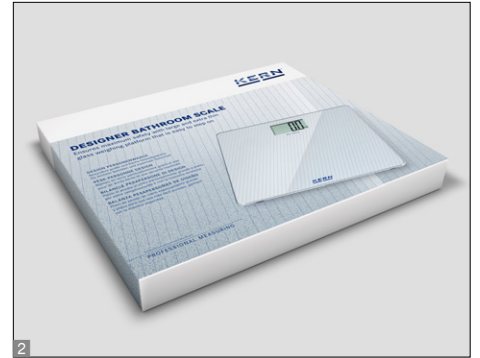
Model	Weighing capacity	Readability
	[Max] kg	[d] kg
KERN		
MGC 100K-1S05	150	1



KERN MGD 200K-1L



KERN MGD 100K-1



Elegant look combined with large, flat glass weighing plate to make it easier to step on and give maximum safety

Features

- Elegant design
- Sturdy glass weighing plate
- KERN MGD-L: particularly large weighing plate for secure, comfortable standing position
- Easy and hygienic cleaning
- Particularly flat design facilitates access
- Generous weighing range
- Secure and non-slip positioning with rubber feet
- Easy to operate: simply tap on it – stand on it – read the weight
- Integrated AUTO-OFF function to preserve the batteries
- Weight displayed in kg or lb
- 1 Large display that is easy to read
- 2 Delivered in single design packaging
- **Note:** The models are only delivered in a set of 5 units. That means the price refers to a delivery of 5 units. Cannot be delivered individually

Technical data

- MGD 100K-1**
- LCD display, digit height 40 mm
 - Dimensions weighing surface, WxD 300x300 mm
 - Batteries included, 2xCR2032, operating time up to 100 h
 - Net weight 1,5 kg
- MGD 200K-1L**
- LCD display, digit height 50 mm
 - Dimensions weighing surface, WxD 380x330 mm
 - Batteries included, 3x 1,5 V AAA, operating time up to 100 h
 - Net weight 2 kg

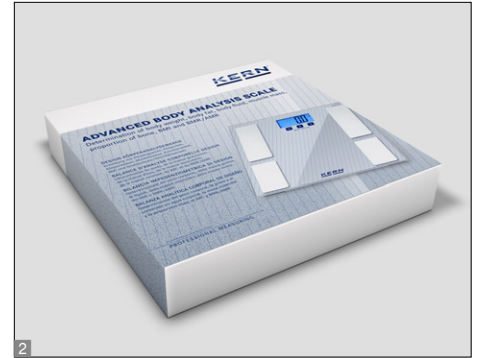
Accessories

- Cleaning cloths, alcohol-free cloths for disinfectant wiping, quick acting, based on modern quaternary ammonium compounds and effective against papova viruses. Particularly gentle on materials, and very well suited for disinfecting products which are sensitive to alcohol. Fulfill the legal requirements for occupational safety in accordance with TRGS 525/540. Packaging contents 100 pcs., size 20x22 cm per cloth, KERN MYC-01

STANDARD



Model	Weighing capacity	Readability
	[Max]	[d]
KERN	kg	kg
MGD 100K-1S05	180	0,1
MGD 200K-1LS05	250	0,1



Design body analysis scale to determine body weight, body fat, body fluid, muscle mass, proportion of bone, BMI and metabolic rate/metabolic rate when exercising

Features

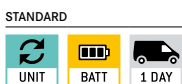
- Used to determine body fat, body water, muscle mass with an accuracy of 0.1 % as well as the body weight and bone mass in 0.1 kg increments
- Display showing the calorie requirements for maintaining the current body weight depending on the level of activity and sex
- Elegant design
- Sturdy glass weighing plate with four large contact surfaces for maximum precision
- Easy and hygienic cleaning
- Particularly flat design facilitates access
- Secure and non-slip positioning with rubber feet
- Easy to operate: simply tap on it – stand on it – read the weight
- Memory for up to 10 people (gender, age, height, level of activity)
- Integrated AUTO-OFF function to preserve the batteries
- Weight displayed in kg or lb
- 1 Large high-contrasted display that is easy to read
- 2 Delivered in single design packaging
- **Note:** The models are only delivered in a set of 5 units. That means the price refers to a delivery of 5 units. Cannot be delivered individually

Technical data

- LCD display, digit height 35 mm
- Overall dimensions W×D×H 300×300×25 mm
- Batteries included, 2×CR2032, operating time up to 100 h
- Net weight 2 kg

Accessories

- Cleaning cloths, alcohol-free cloths for disinfectant wiping, quick acting, based on modern quaternary ammonium compounds and effective against papova viruses. Particularly gentle on materials, and very well suited for disinfecting products which are sensitive to alcohol. Fulfill the legal requirements for occupational safety in accordance with TRGS 525/540. Packaging contents 100 pcs., size 20×22 cm per cloth, KERN MYC-01



Model	Weighing capacity	Readability
	[Max]	[d]
KERN	kg	kg
MFB 150K100S05	182	0,1